



Building an Ag -Data Governance Framework for NAPDC

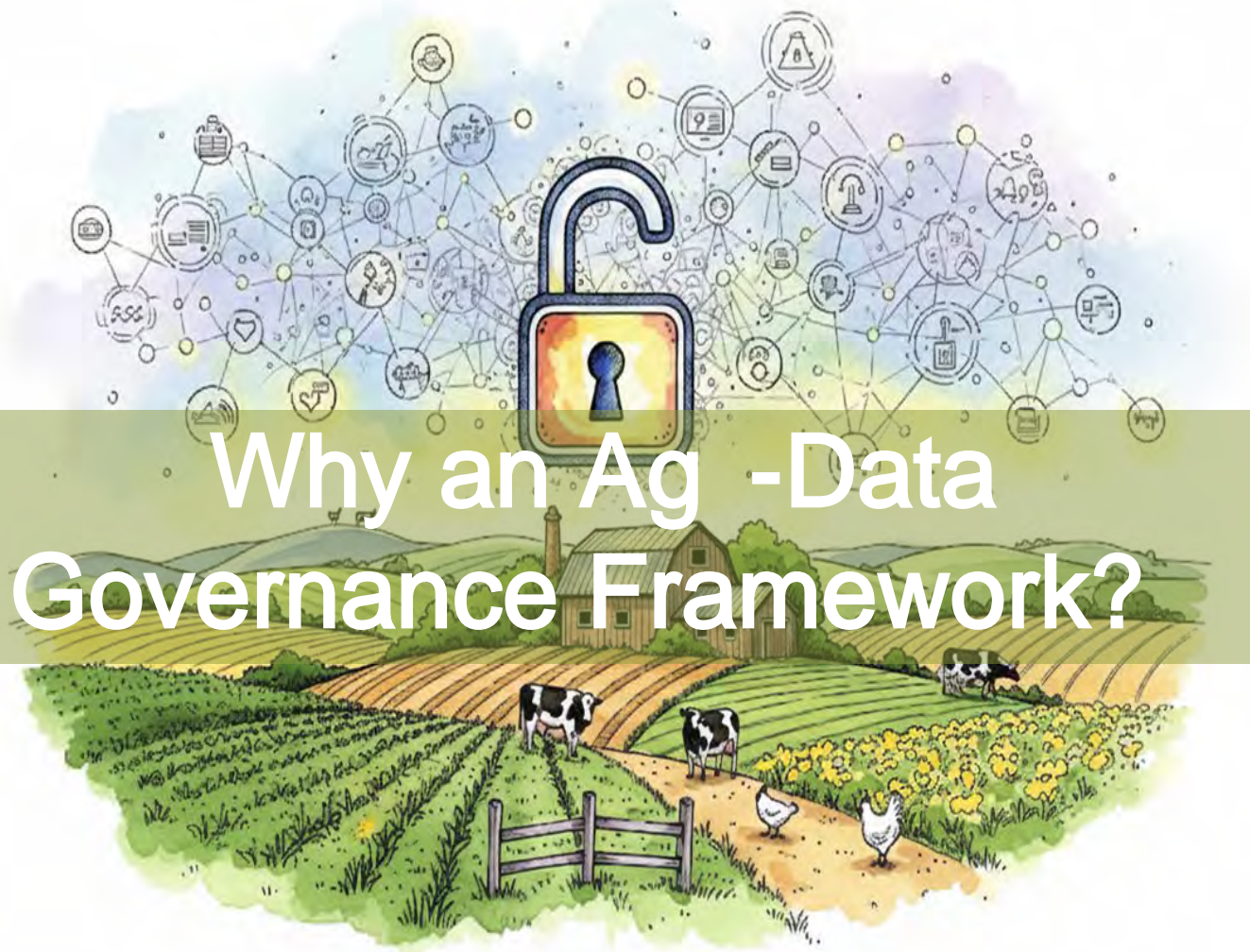


Who I Am



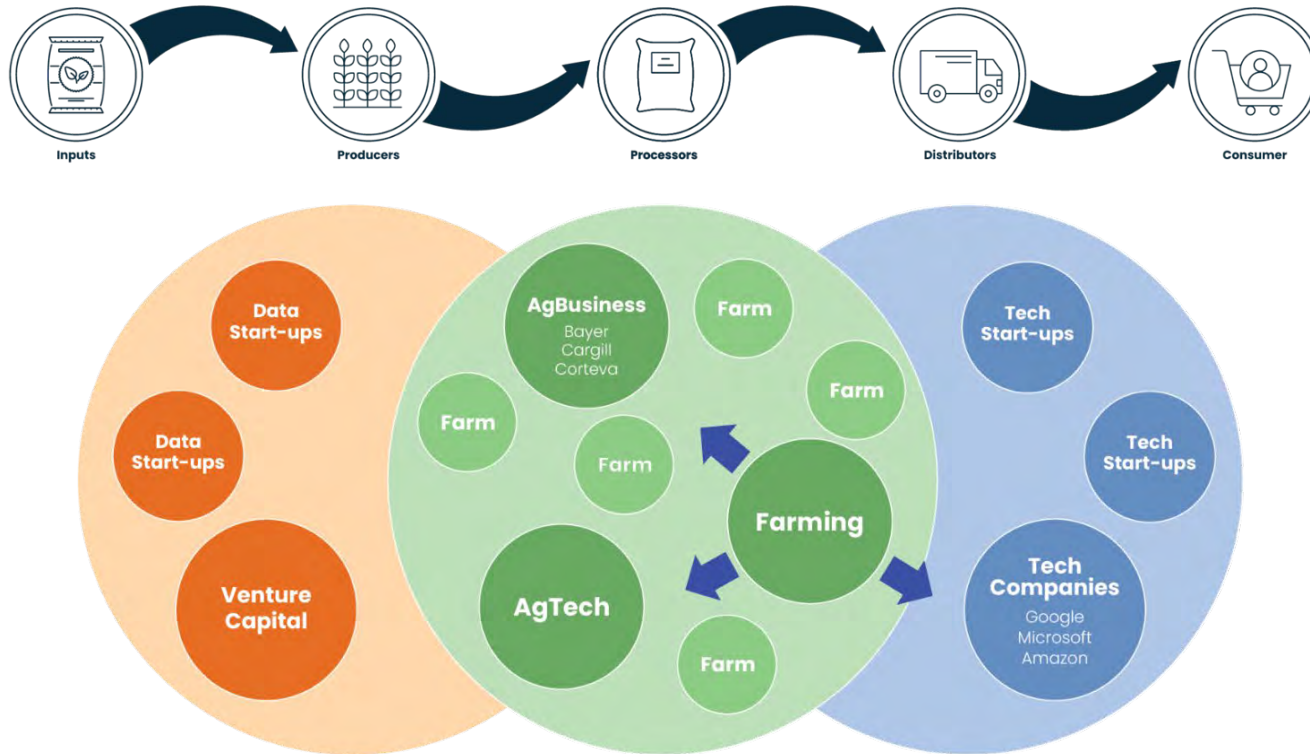
- Policy Analyst & Researcher
National Policy Consensus Center,
Portland State University
- Leading facilitation of the NAPDC
Ag-Data Governance Workgroup
- ***Focus Areas:*** Collaborative data
governance, offshore wind roadmap
planning, education engagement, and
AI governance/policy





Why an Ag -Data Governance Framework?

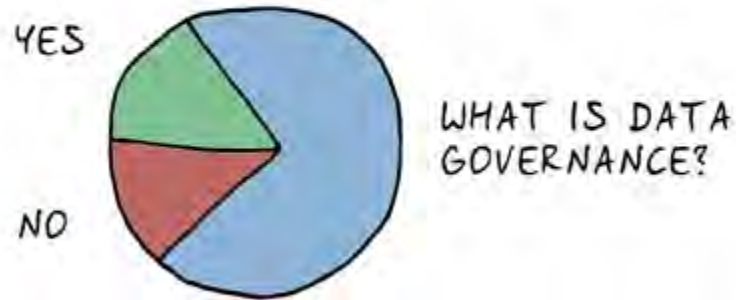
Ag Data Ecosystem Stakeholders



Source: Adapted from Wolfert et al., Big Data in Smart Farming - A Review, Agricultural Systems, 153:69-80, 2017.

Data Governance Framework Overview

IS YOUR ORGANIZATION DOING
DATA GOVERNANCE?





Why an Ag -Data Governance Framework for NAPDC?

- Data governance builds trust, transparency, and accountability across the research network.
- NAPDC's goal: create shared rules and tools that make participation safe and worthwhile for producers.





A Multi -Stakeholder Workgroup

Participants include:

- Researchers
- Non-profit orgs data managers
- Extension agents
- NPCC facilitation team (Portland State University)





The Collaborative Process



Building the Framework Together

*The Collaborative Process Behind NAPDC Ag -
Data Governance: mutual -gains, interest -based
approach*

- Shared Purpose
- Co-Development
- Mutual -Gains Alignment
- Collective Action

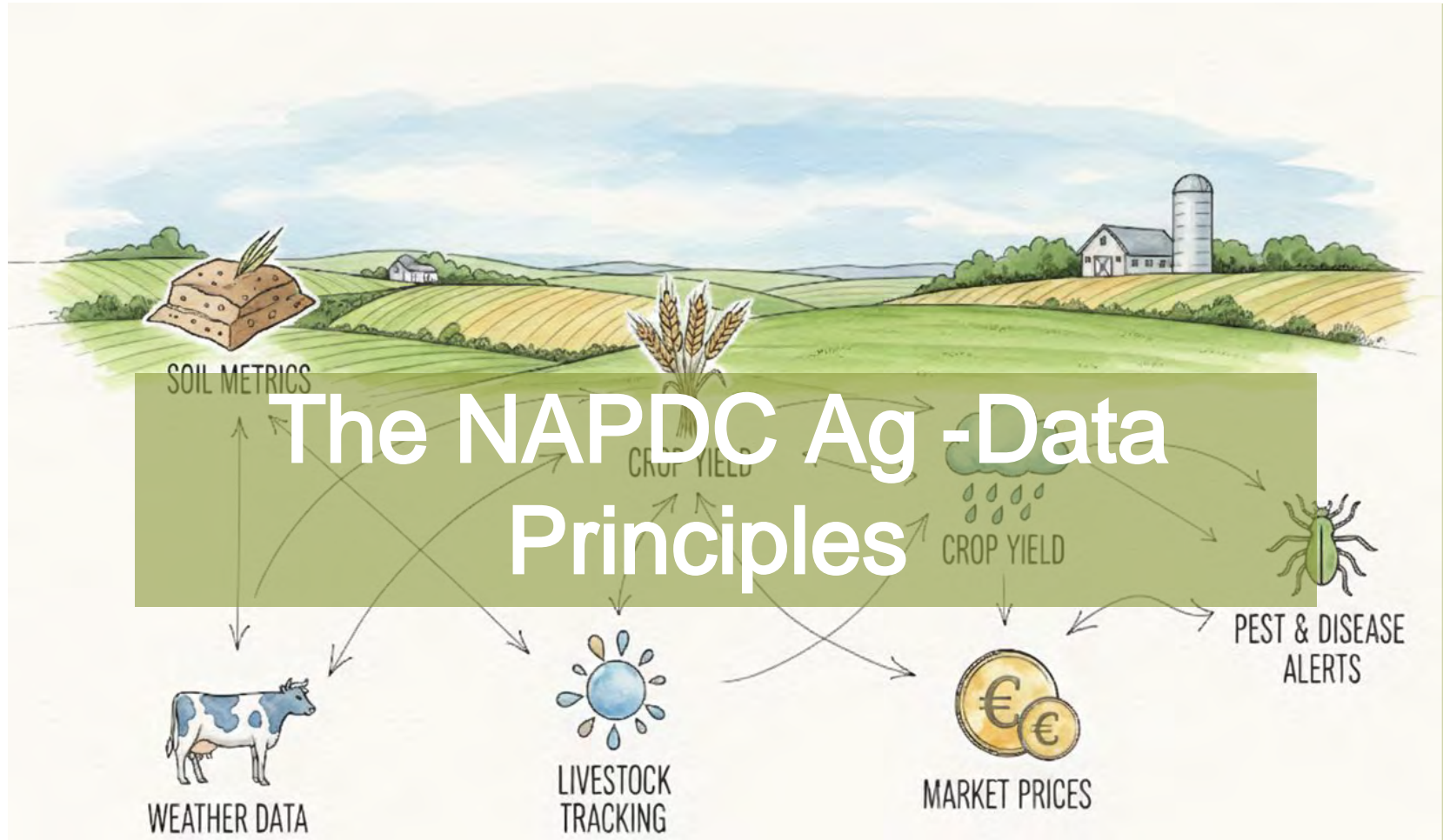




How We Worked Together?

- **Step 1** —Listen & Scope. Map use cases, challenges and barriers to access, sharing and using data for research.
- **Step 2** —Synthesize & Cluster. Group challenges into themes aligned with data governance needs.
- *In progress* → **Step 3** —Draft Principles (“We will..”). Co-write plain-language commitments with the workgroup.







Farmer -Centered Ag -Data Governance

Four Core Clusters

- Farmer Data Communication & Use Expectations
- Farmer Data Motivations & Participation
- Farmer-Researcher Data Agreements: Clarity, Risks & Outcomes
- Farmer Data Education & Extension Partnerships





Farmer -Centered Ag Data Governance Four Core Clusters

Farmer Data Communication & Use Expectations

- *We will clearly explain how farm data is collected, used, and shared in plain language; and we will provide farmers with timely notice of any changes in data use, access, or partners with a choice to accept or decline.*





Farmer -Centered Ag Data Governance Four Core Clusters

Farmer Data Motivations & Participation

- *We will work with farmers to understand their motivation and recognize their agency to opt into participation and to consent to the proposed data practices and protections.*





Farmer -Centered Ag Data Governance Four Core Clusters

Farmer –Researcher Data Agreements: Clarity, Risks & Outcomes

- *We will define the purpose, scope, and categories of data collected; clarify farmers' data contributions; set consistent conflict -handling rules; and respect farmer ownership of data.*





Farmer -Centered Ag Data Governance Four Core Clusters

Farmer Data Education & Extension Partnerships

- *We will provide upfront training before data consent; share data management best practices; and clarify data categories with concrete, farmer -relevant examples (e.g., aggregation, reuse).*





How We Will Continue Working Together?

- ***Next up*** → **Step 4** —Align & Finalize. Confirm wording aligns with the overall data governance approach and refine principles for clarity.
- ***Coming soon*** → Translate to Practice. We'll build simple tools (communication templates, consent/notice language, agreement checklists) for pilots in NAPDC projects.







Key Takeaways So Far

- The foundation of working with farm data is **trust**.
- Co-design takes time, but it produces better results and shared ownership.
- Data principles are the starting point; practical tools make them real.





Why it matters for the future?

Building a Culture of Responsible Data Use

- The real goal is lasting change: helping everyone speak the same language about how data is handled, shared, and valued, with farmers and researchers building it together.





Thank You & Acknowledgments

With appreciation to all members of the NAPDC Agriculture Data Governance Workgroup:

- Researchers, Extension partners, and nonprofit collaborators.
- Facilitation and process design: NPCC, Portland State University.

Contact: *Ana Sofia Castellanos S.*

acastel2@pdx.edu

503 572 7398



Closing