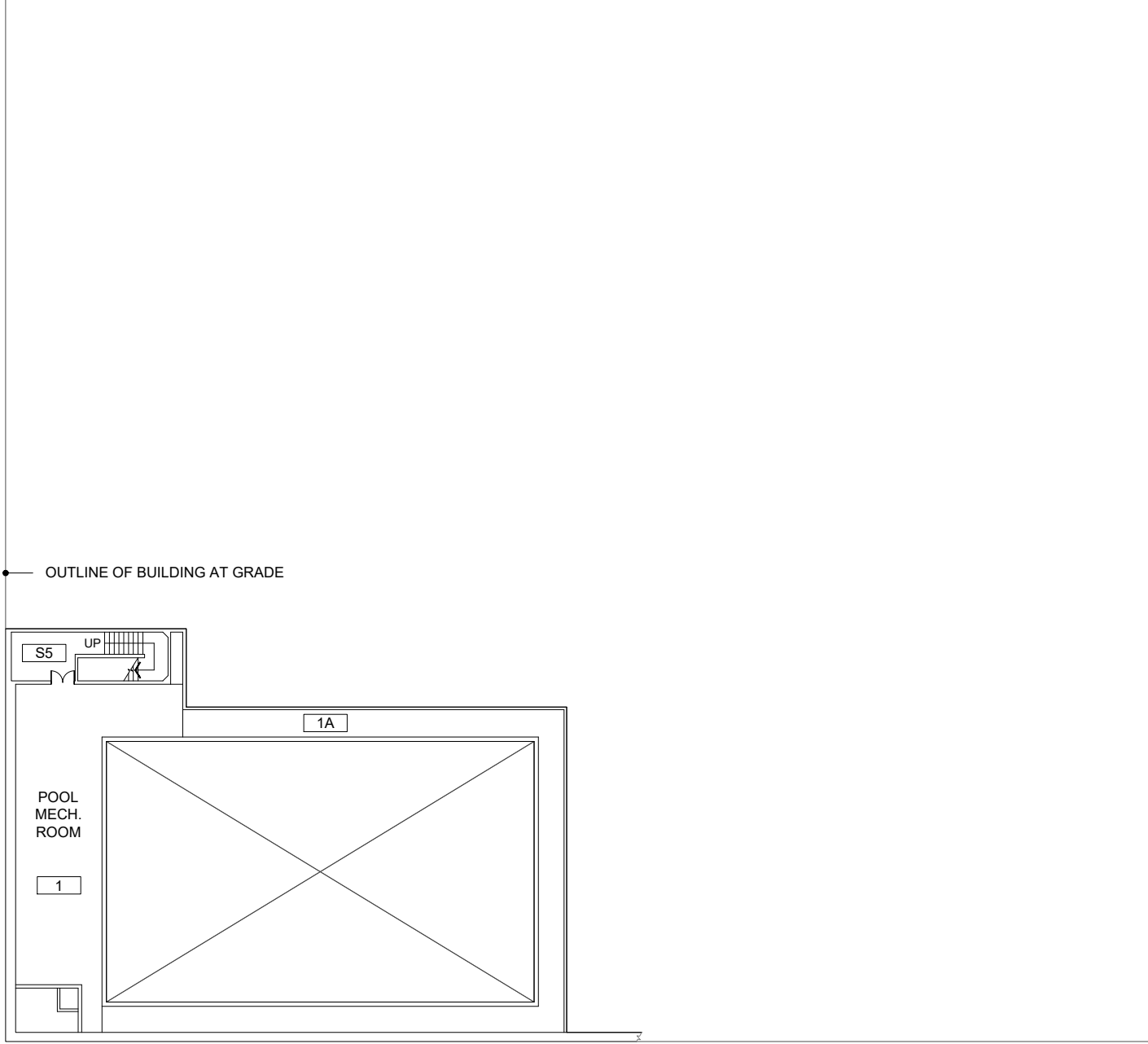


# Peter W. Stott Center (PSC)

MAIN ENTRANCE ON FIRST FLOOR

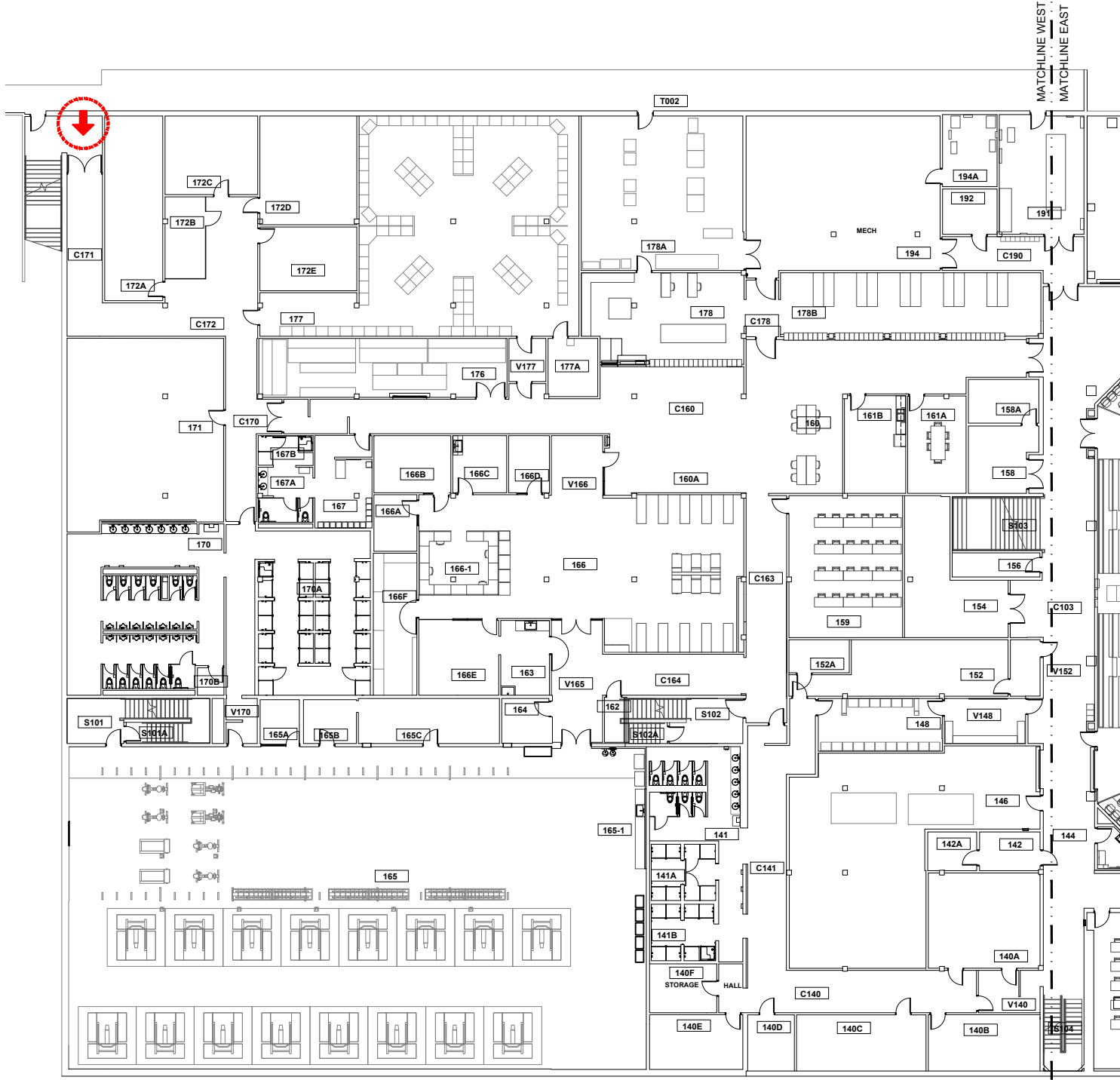
If you need assistance, or an accommodation to access an office or classroom please contact:  
For Student - Disability Resource Center at (503) 725-4150  
For Employees - Human Resources at (503) 725-4926



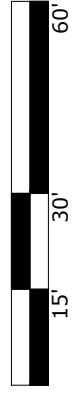
BASEMENT FLOOR PLAN  
Peter W. Stott Center  
930 SW Hall St

DRAWN BY:  
HH  
DATE:  
03/2021

231\_AB1



Scale  
1" = 30'-0"



ELEVATOR ACCESS



WHEELCHAIR ACCESS



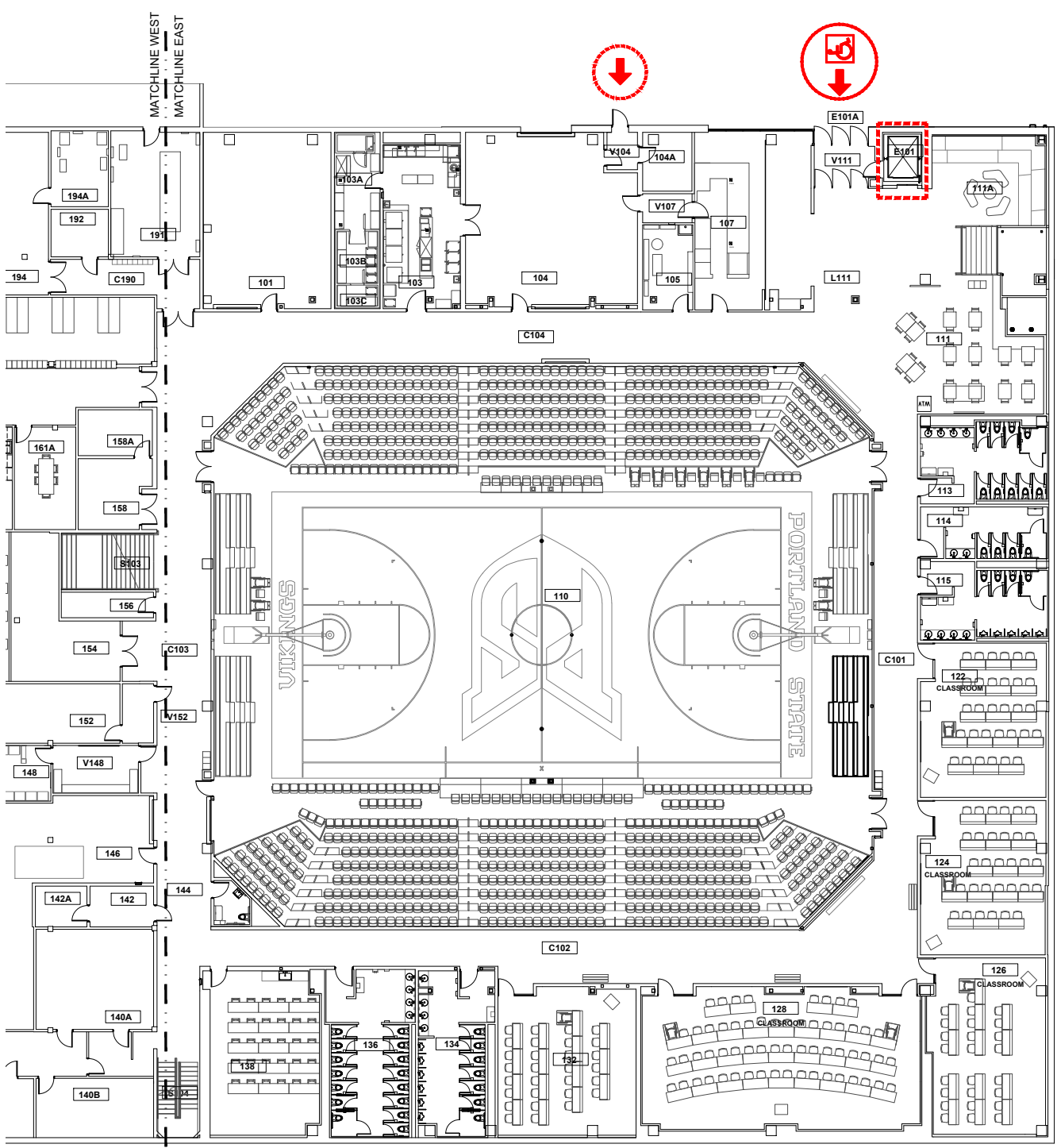
BUILDING ACCESS - NOT  
WHEELCHAIR ACCESSIBLE



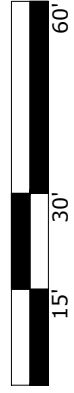
FIRST FLOOR PLAN (WEST)  
Peter W. Stott Center  
930 SW Hall St

DRAWN BY:  
HH  
DATE:  
03/2021

231\_A1.1



Scale  
1" = 30'-0"



ELEVATOR ACCESS



WHEELCHAIR ACCESS



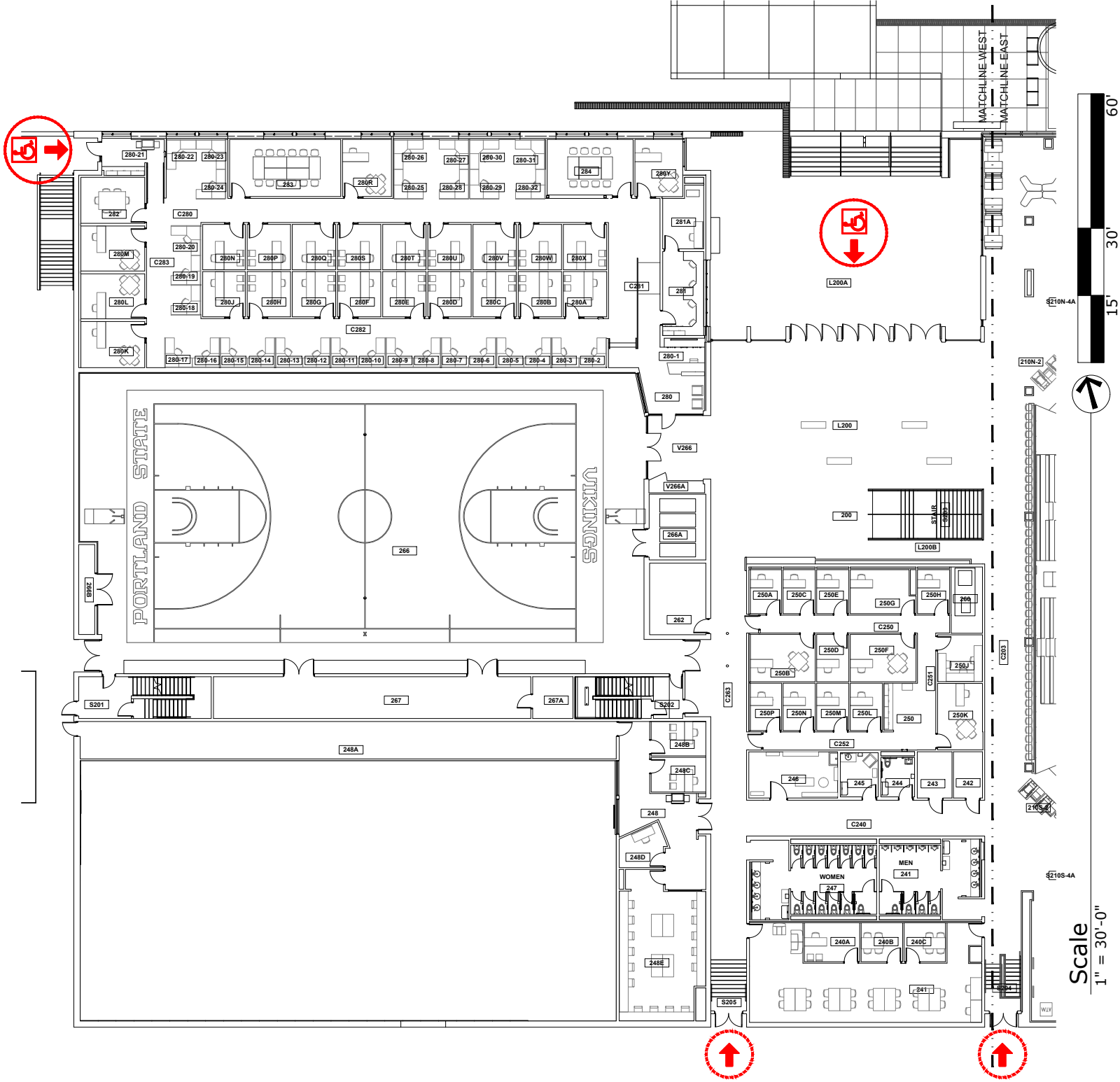
BUILDING ACCESS - NOT  
WHEELCHAIR ACCESSIBLE



FIRST FLOOR PLAN (EAST)  
Peter W. Stott Center  
930 SW Hall St

DRAWN BY:  
HH  
DATE:  
03/2021

231\_A1.2



ELEVATOR ACCESS

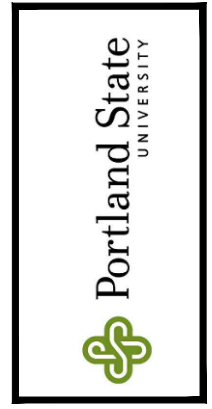


WHEELCHAIR ACCESS



BUILDING ACCESS - NOT  
WHEELCHAIR ACCESSIBLE

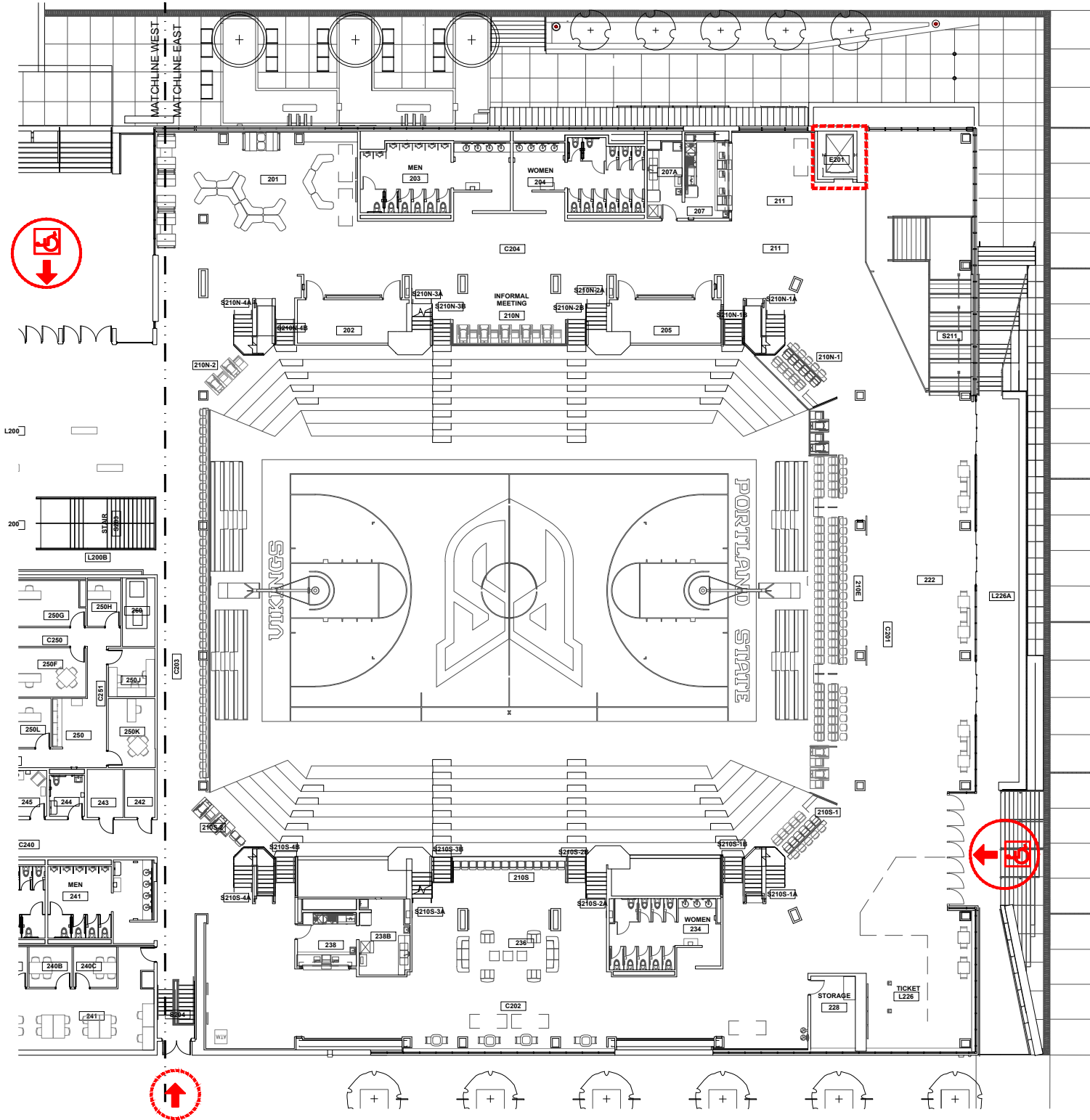
Scale  
1" = 30'-0"



2ND FLOOR PLAN (WEST)  
Peter W. Stott Center  
930 SW Hall St

231\_A2.1

DRAWN BY:  
HH  
DATE:  
03/2021

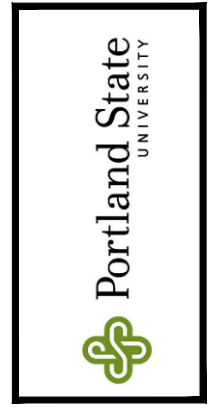


Scale  
1" = 30'-0"



- ELEVATOR ACCESS

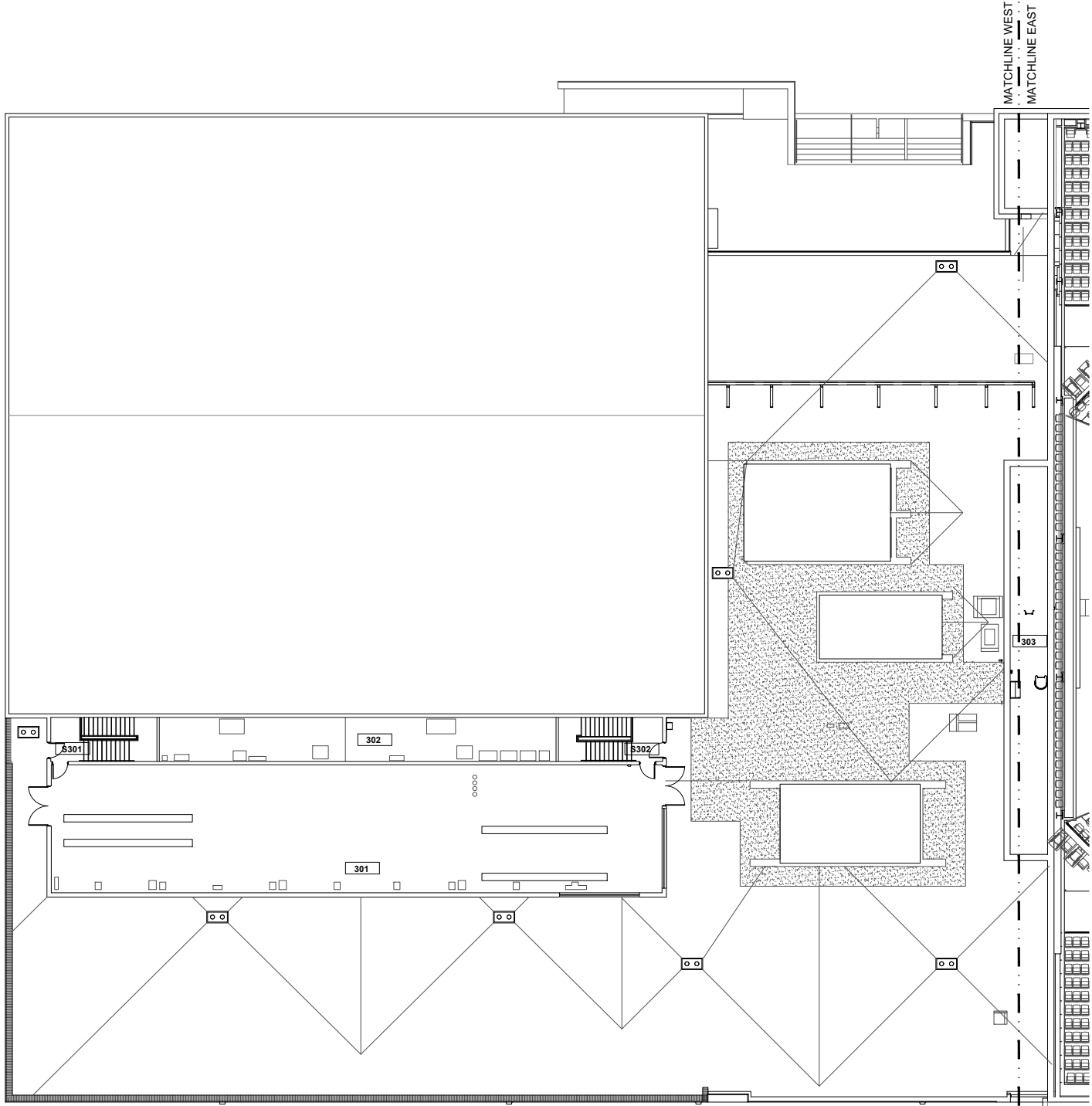

WHEELCHAIR ACCESS
- WHEELCHAIR ACCESS - NOT WHEELCHAIR ACCESSIBLE



**2ND FLOOR PLAN (EAST)**  
 Peter W. Stott Center  
 930 SW Hall St

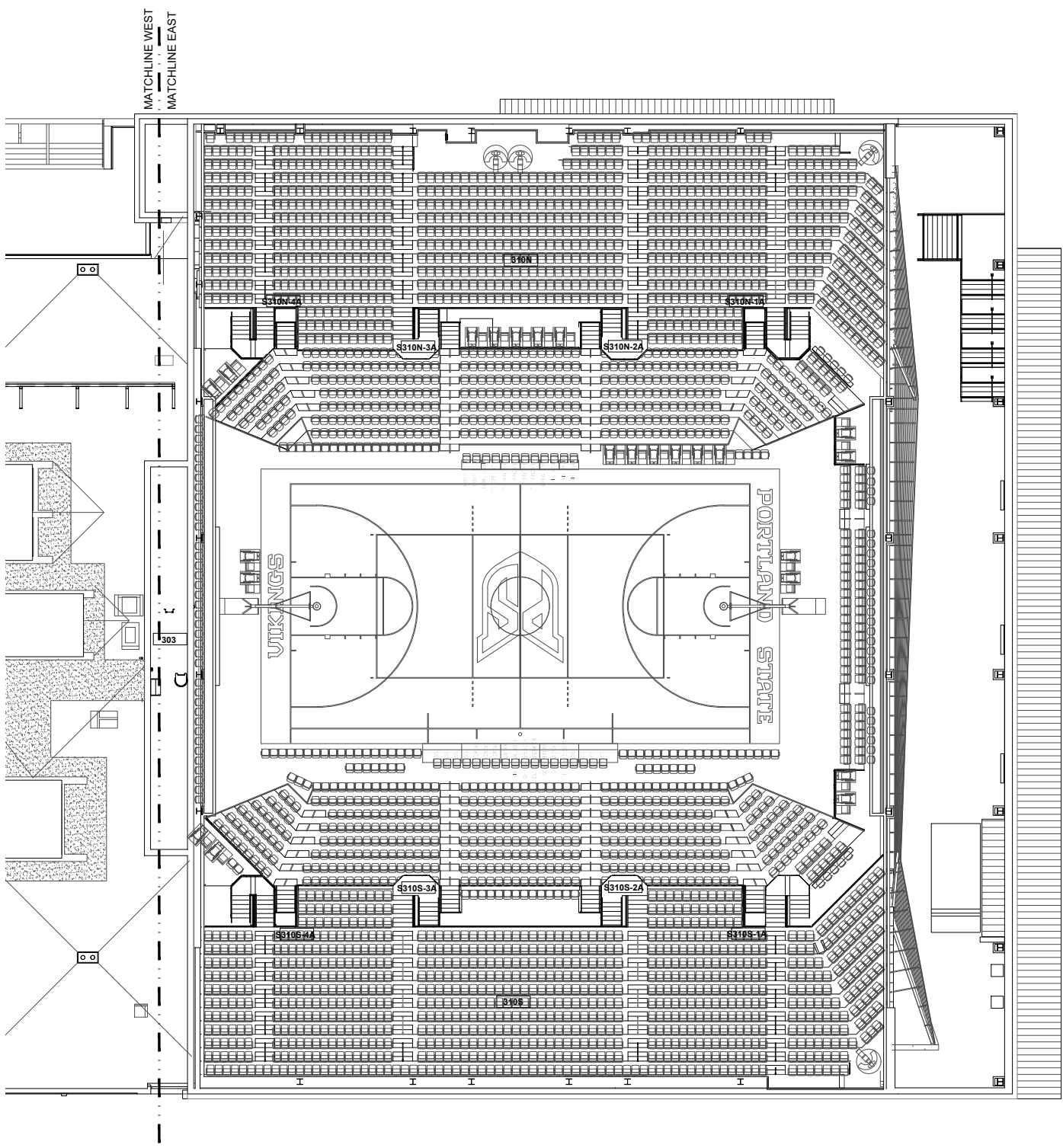
**231\_A2.2**

DRAWN BY:  
 HH  
 DATE:  
 10/2018



Scale  
1" = 30'-0"

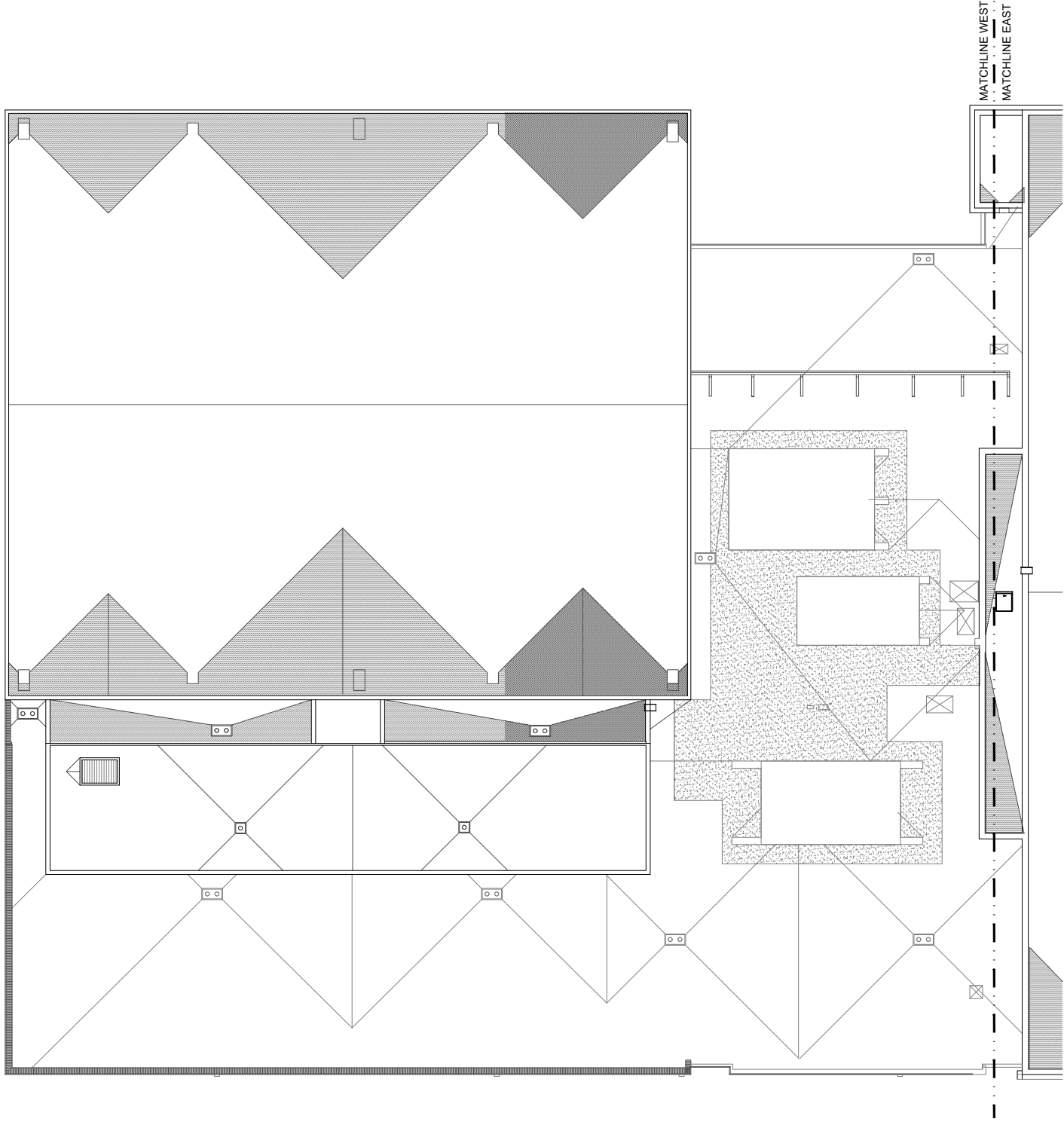




Scale  
1" = 30'-0"

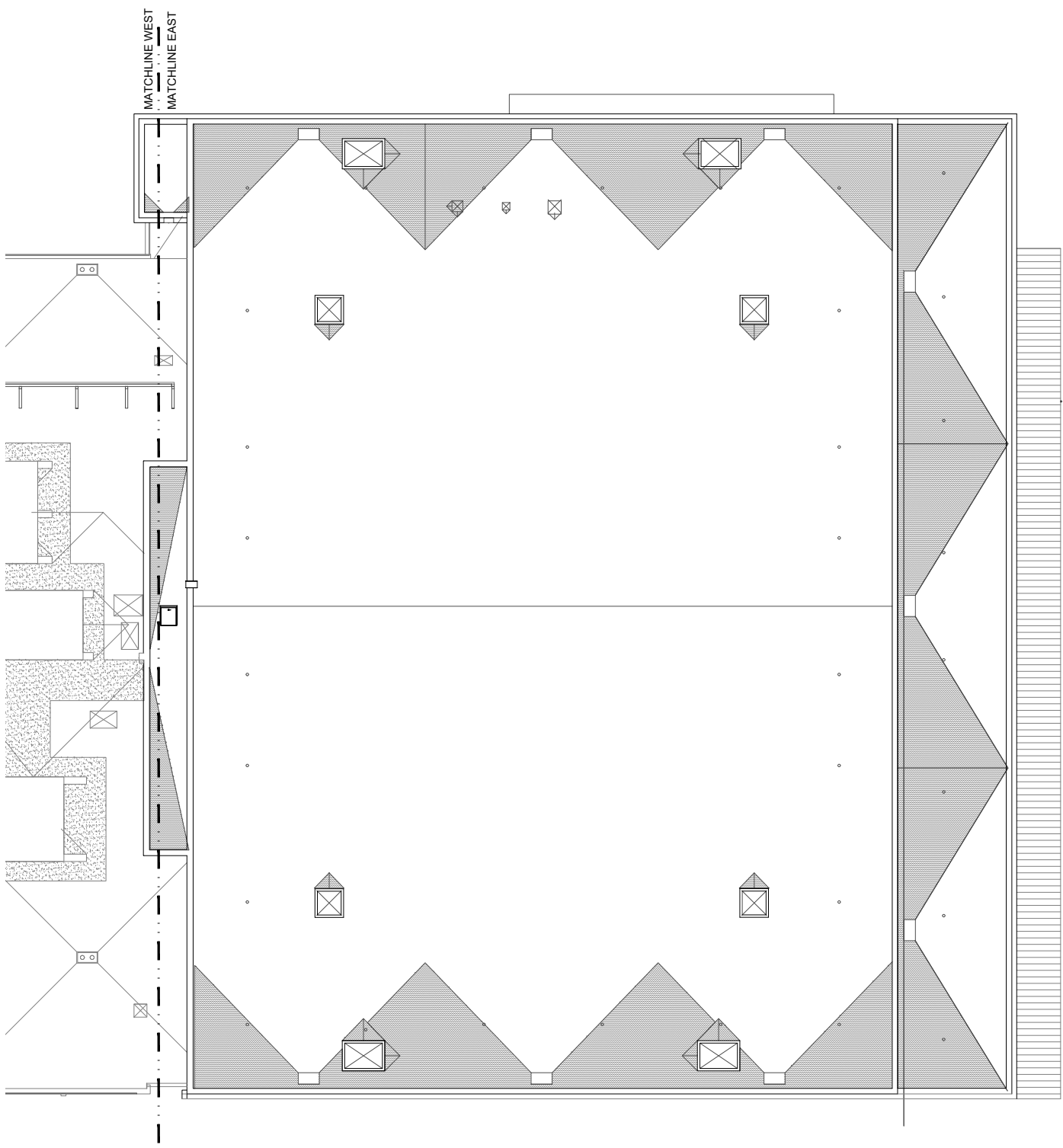






Scale  
1" = 30'-0"





Scale  
1" = 30'-0"



ROOF PLAN (EAST)  
Peter W. Stott Center  
930 SW Hall St

DRAWN BY:  
HH  
DATE:  
03/2021

231\_A4.2