




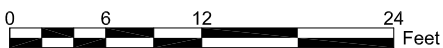


STANDARD LAYER REPORT

	AREA	QTY
 Building Services	71	2
 Circulation	721	8
 Mechanical Space	16	1
 Net Assignable Space	891	5
 Vertical Penetrations	37	1
TOTAL:	1,736	17
Floor Gross:	1,953	



SIMON BENSON HOUSE

First Floor Plan

1803 SW Park Avenue, Portland, Oregon 97201-3220

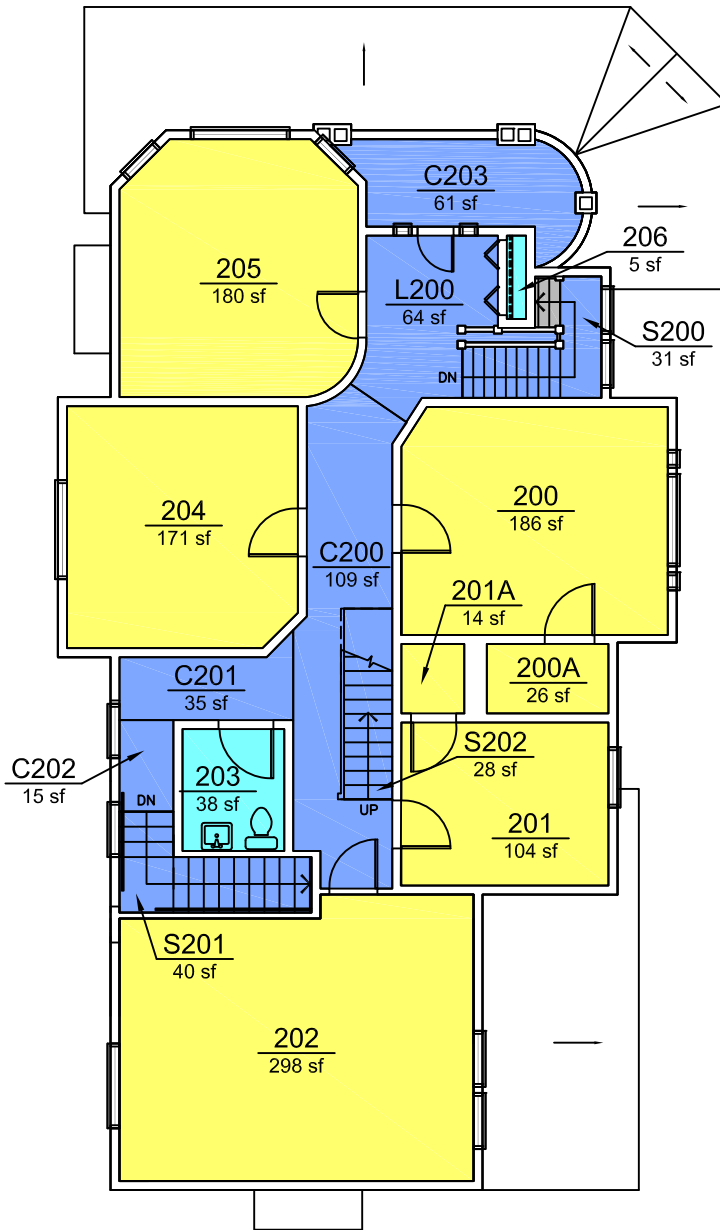
Print Date: 10/2010

Last Modified Date: 10/2010







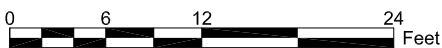
Portland State
UNIVERSITY

Campus Planning Office
<http://www.pdx.edu/planning-sustainability>



STANDARD LAYER REPORT

	AREA	QTY
 Building Services	43	2
 Circulation	383	8
 Net Assignable Space	979	7
 Vertical Penetrations	4	1
TOTAL:	1,409	18
Floor Gross:	1,600	



SIMON BENSON HOUSE

Second Floor Plan

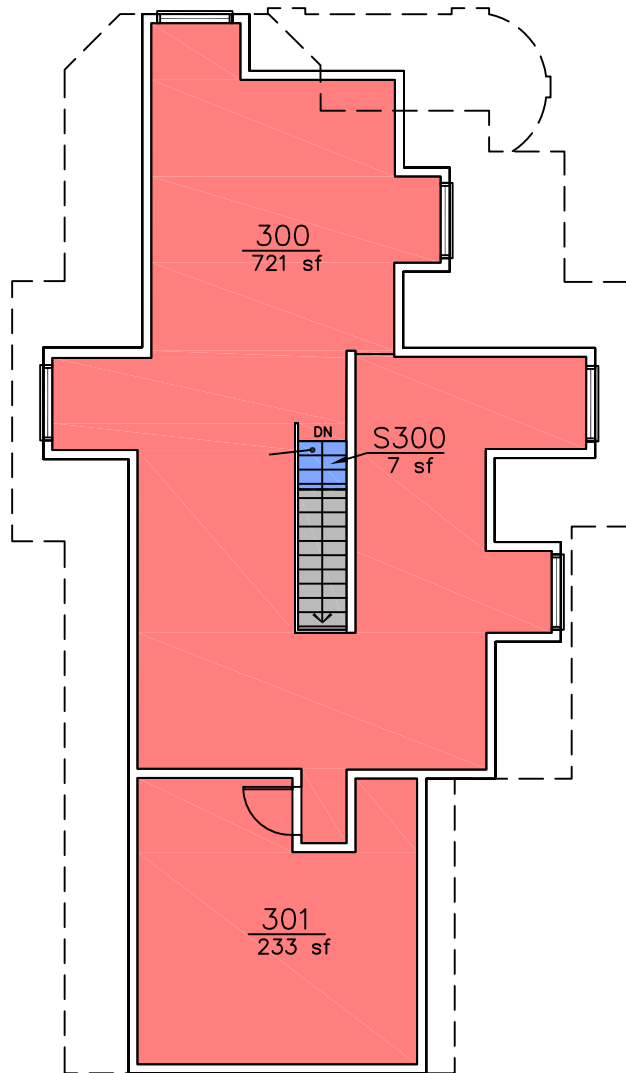
1803 SW Park Avenue, Portland, Oregon 97201-3220




Print Date: 10/2010

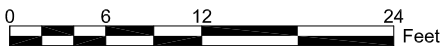
Last Modified Date: 10/2010



Campus Planning Office
<http://www.pdx.edu/planning-sustainability>



STANDARD LAYER REPORT			
		AREA	QTY
	Circulation	7	1
	Mechanical Space	954	2
	Vertical Penetrations	21	1
	TOTAL:	982	4
	Floor Gross:	1,099	



SIMON BENSON HOUSE

Third Floor Plan

1803 SW Park Avenue, Portland, Oregon 97201-3220

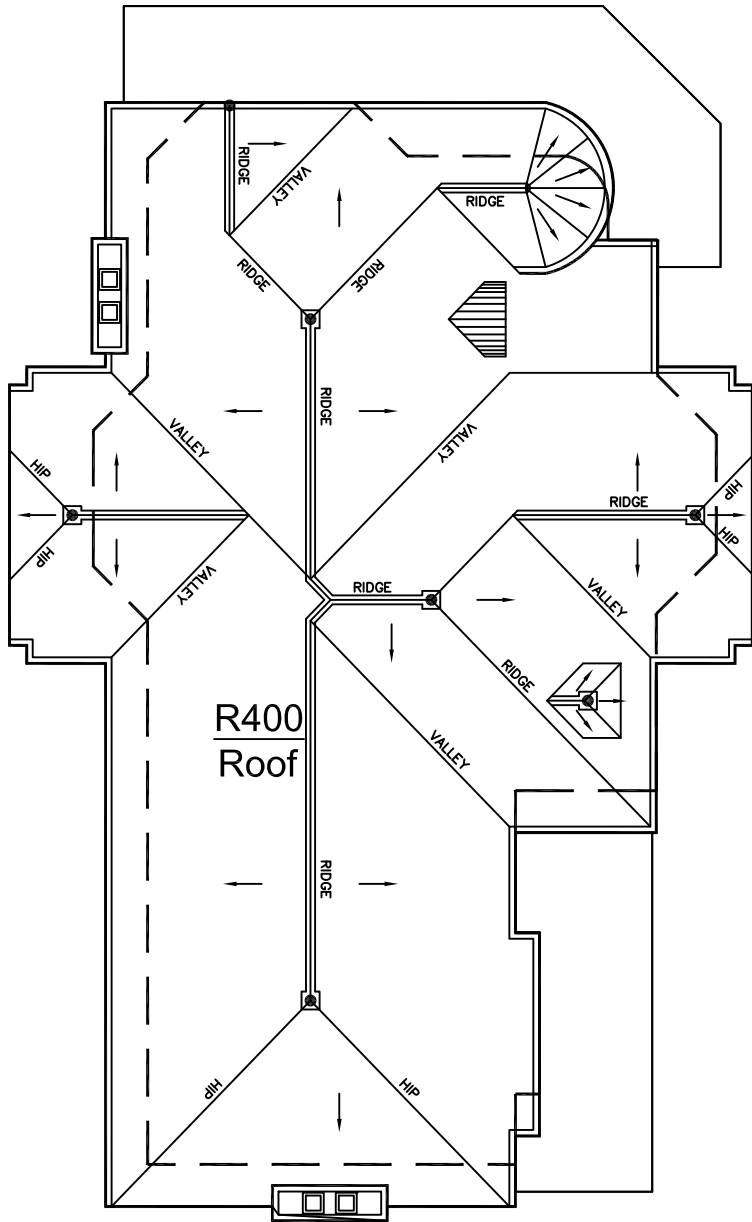
Print Date: 10/2010

Last Modified Date: 10/2010



 **Portland State**
UNIVERSITY

Campus Planning Office
<http://www.pdx.edu/planning-sustainability>



SIMON BENSON HOUSE

Roof Plan

1803 SW Park Avenue, Portland, Oregon 97201-3220

Print Date: 10/2010

Last Modified Date: 10/2010



Campus Planning Office
<http://www.pdx.edu/planning-sustainability>