

From Metasystems Methodology, Hall, A.D.

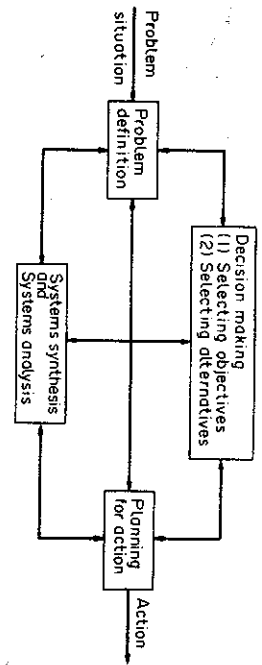


FIGURE 3.8. A Generic Model for Any One Phase of the SM Process

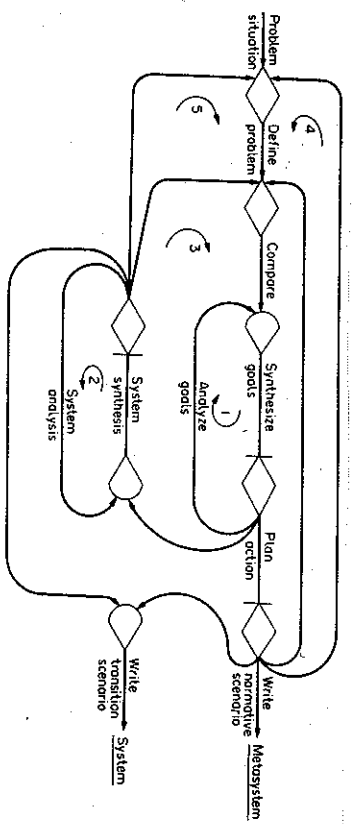


FIGURE 3.9B. A GERT Model of the Decision-Cybernetic Paradigm for One Phase and One Level of the SM Process

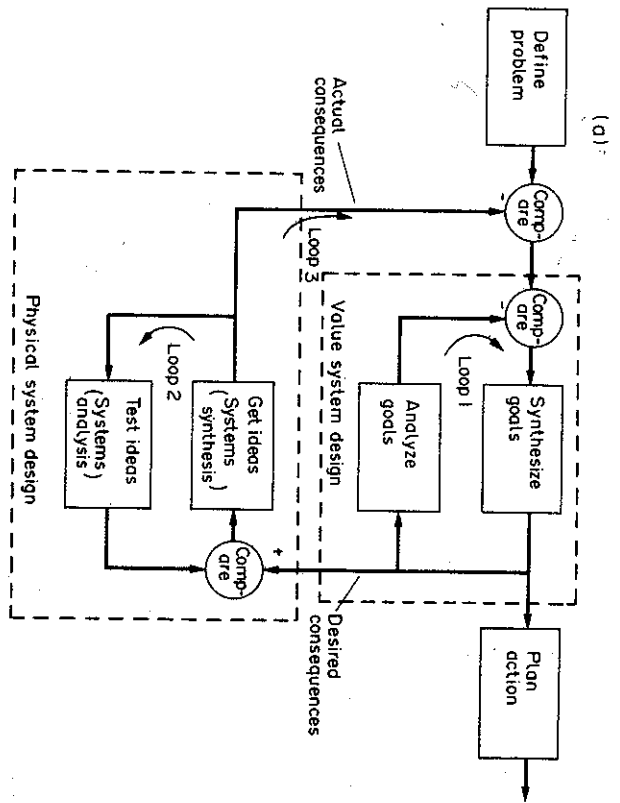
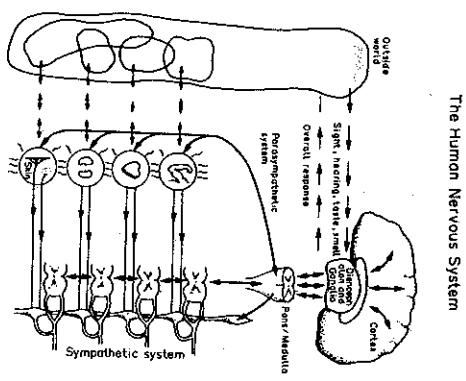
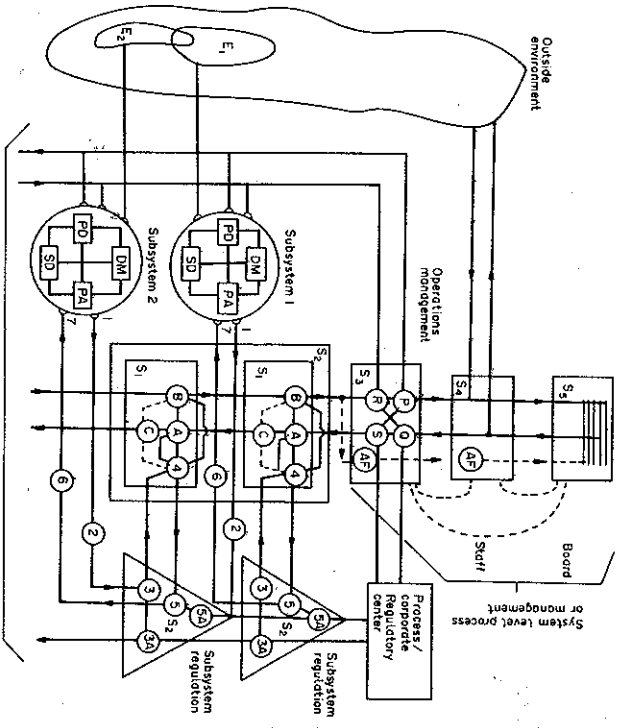


FIGURE 3.9A. The Kernel of the Unilevel, Uniphase Logic of SM



The Human Nervous System



The analogous SM process and its management

- Legend
- System one: subsystems for subprocesses per fig. 3-8
 - A Receive corporate (system level) instructions
 - B Report upwards to system level
 - C Normative Planning and system levels 4 and 5
 - System two: all system one regulators
 - 1 Sensing and coding the actions in subsystems one
 - 2 Monitors of sensors for record results
 - 3 Monitors of sensors for record results
 - 4 Directing, endorsing, routing, starting special action
 - 5 Receivers of instructions and programs
 - 6 Decoding and receptors for effector actions
 - System three: for controlling internal homeostasis
 - 7 Constantly receives filtered news from system two
 - 8 Receives to audits Computer A, B, filters data
 - 9 Requests routine data of systems 2, C-S is down filter
 - AF Allowed filters pass data above alarm thresholds

FIGURE 3.9C. Systems Management of One Phase of SM. Sources: Fig. 3.8 above, and several figures from Beer (1972)