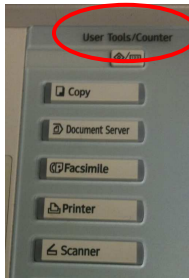


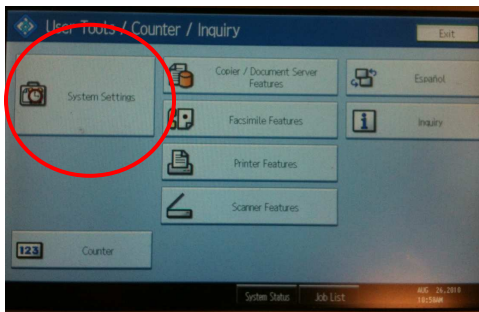
RICOH Copier Energy Conservation

"Auto Off" - Set your copier to automatically go into sleep mode after a specific period on inactivity.

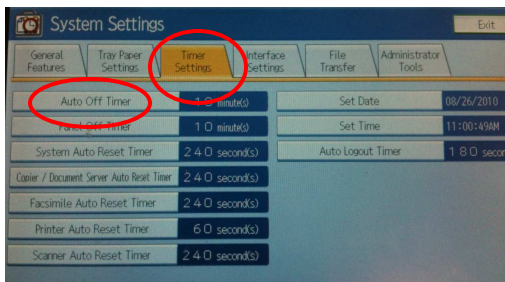
1. Go to the *User Tools* button.



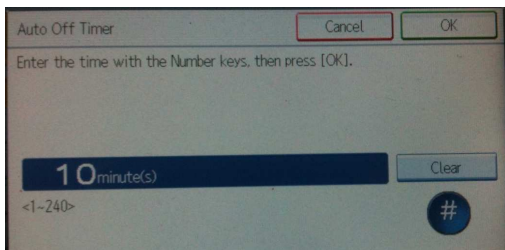
2. Select *System Settings*



3. Select *Timer Settings* and then select *Auto Off Timer*



4. Clear the current timer setting and select the period of time before the copier will "auto off". The time can be set from 1 to 240 minutes, using the number keys.



You can also adjust the "Panel Off" Timer setting.

Set the amount of time the machine waits before switching the panel off after copying has finished or the last operation is performed. Enter a time interval between 10 seconds and 240 minutes, using the number keys. The default setting is On, 1 minute(s).

For more assistance you can call your IKON technician - phone number on the IKON sticker on the copier