

**Second Addendum to the
2005 Community Assessment Report
(revised)
for
Portland Public Schools Head Start**

Prepared by:

**Population Research Center, Portland State University
and
Portland Public Schools Head Start**

June 2007

**Second Addendum to the
2005 Community Assessment Report
(revised)
for
Portland Public Schools Head Start**

Prepared by:

**Population Research Center, Portland State University
and
Portland Public Schools Head Start**

June 2007

Project Staff:

Risa Proehl, Demographic Analysis Coordinator;

Moriah McSharry McGrath, Vivian Siu, and Arlene Wallace, Research Assistants

TABLE OF CONTENTS

	Page
Introduction	2
Updates to Data	3
Description of Changes in the Reporting of Data	4
Description of Changes in the Results and Trends	5
Needs of Children and Families – Key Overall Findings and Recommendations (Revised).....	12
Demographic and Socioeconomic Characteristics of the Portland Public Schools Head Start Service Area and Multnomah County (Revised).....	15
Findings from Program Information Reports (Revised).....	43
Appendix 1 – Initial Findings from Demographic and Socioeconomic Data for the Service Area and Multnomah County (Revised)	45
Data Sources.....	49

INTRODUCTION

This document is the second addendum to the Community Assessment Report prepared for Portland Public Schools (PPS) Head Start in April 2005. A first addendum was prepared in March 2006. Since the completion of the original report, new demographic and socio-economic data have become available and updated estimates have been prepared. The 2005 Report includes data estimates for 2003, the first addendum includes estimates for 2004, and this second addendum includes estimates for 2005. Revisions were made to four sections of the original report: 1) the ‘Needs of Children and Families, Key Overall Findings and Recommendations;’ 2) ‘Demographic and Socioeconomic Characteristics of the Service Area and Multnomah County;’ 3) ‘Findings from Program Information Reports;’ and 4) ‘Initial Findings from the Demographic and Socioeconomic Data for the Service Area and Multnomah County.’ Revisions have been made to the data tables, charts, and interpretive text. Findings were updated to reflect the new data. The section on the ‘Needs of Children and Families, Key Overall Findings and Recommendations’ was revised in collaboration between the Population Research Center (PRC) and PPS Head Start staff. The revised sections are the only sections from the original report that are included in this addendum.

Analysis of the new data resulted in some changes of the demographic characteristics and trends of the service area and Multnomah County that were interpreted in the 2005 Community Assessment. Any significant demographic changes are highlighted in this addendum. In addition to updating the data and interpretive text, a few changes were made to the manner in which the data are reported, and a description of these revisions is also included.

The identification numbers of the tables and figures in this document correspond to the numbers in the original report.

Order of Topics in this Addendum

- 1) Introduction
- 2) Description of the updated data
- 3) Detailed description of the changes to the Community Assessment Report
 - a. Changes in reporting of data
 - b. Significant changes in the results and trends
- 4) The revised sections of the report
 - a. ‘Needs of Children and Families, Key Overall Findings and Recommendations’
 - b. ‘Demographic and Socioeconomic Characteristics of the Service Area and Multnomah County’
 - c. ‘Findings from Program Information Reports’
 - d. Appendix 1, ‘Initial Demographic and Socioeconomic Findings’
- 5) Data sources

UPDATES TO DATA

Census Data

Most of the data in the 2005 Community Assessment Report were obtained from the US Census Bureau. This document includes 2000 US Census data, in addition to 1996 and 2005 American Community Survey (ACS) data. The 2003 ACS data are replaced with 2005 ACS data for Multnomah County in this addendum. The ACS data are not available at the geographic level of PPS Head Start's service area.

Administrative Data

Birth data for 2004 collected from the Oregon Department of Human Services, Center for Health Statistics have been added. Recent data regarding children with special needs were obtained from various local and state agencies.

If more recent data were not available since the preparation of the first addendum (in March 2006), then data from the first addendum are included in the tables in this document.

Estimates

Because 2005 ACS data are not available for the service area, many data tables in this document report estimated data values for 2005. The values have been estimated based on recent population trends in the service area and in Multnomah County. In some cases the estimates were prepared based on average annual growth rates between 1990 or 1996 and 2000. In other cases the estimates were prepared by applying the proportions of the 2000 total population to the estimated 2005 total population to obtain sub-population group values for 2005. Some estimates for the service area were calculated using 2000-2005 growth rates for Multnomah County.

Most tables reporting administrative data (the special needs and teen pregnancy tables) contain values that were only available at the county level of geography. The values included in the tables for the service area are estimates prepared by applying county rates to relative population groups in the service area.

Program Information Report Data

One more year of PPS Head Start's Program Information Report (PIR) data - from the 2005-06 school year, was compiled and analyzed for this addendum. PIR findings include these data as well as the data included in the 2005 Community Assessment Report.

Data Sources

A list of the data sources for each of the tables and figures that hold revised or new data is included at the end of this document.

DESCRIPTION OF CHANGES IN REPORTING OF DATA

Key Overall Findings and Recommendations

- The findings and recommendations are now numbered. The numbers in the findings do not necessarily correspond to the numbers in the recommendations.

Demographic and Socioeconomic Characteristics

This section describes how tables and figures significantly differ from the 2005 Community Assessment Report. The tables or figures that were changed in either the first or second addendum are listed below.

- **Table 5. Children’s Households by Family Type, Service Area (children under 18)**
A column was added that displays the percentage of all households that children’s households represent.
- **Table 7. Ability to Speak English and Language Spoken at Home**
The categories in this table were changed due to the unavailability of the data and a change in the way data are reported in the 2005 ACS. Persons who speak English ‘Not Very Well’ were added to ‘Not Well’ or ‘Not at All’ to form a broader category: ‘Persons who speak English less than Very Well’. Data were recompiled in 1996 and in 2000 so that they are comparable to the 2005 data.
- **Table 14. Poverty for Persons by Multnomah County Regions**
This table was eliminated due to unavailability of the data.
- **Table 24. Time of First Prenatal Care**
This table was eliminated because the useful data are also shown in Table 22.

DESCRIPTION OF CHANGES IN TRENDS OR RESULTS

Changes to the Needs of Children and Families - Key Overall Findings and Recommendations

Some of the key overall findings and recommendations based on data updated in this addendum were modified to reflect any changes in demographic and socioeconomic trends reported in the 2005 Community Assessment Report and its first addendum. The original findings and recommendations were evaluated and revisions made to reflect the revised data. The revised key findings and recommendations are reported on pages 10-12 in this document.

These changes to the key overall findings and recommendations are described below. Some of the statistics, percentages or numbers, were changed. If trends remained the same and the new data support the finding without much rewording, mention of the change is not necessarily included below.

Finding 1. PPS Head Start is serving the areas of greatest poverty and diversity.

Information on poverty by region in Multnomah County was eliminated. Information is reported for the service area and for Multnomah County.

Some of the statistics were revised. In the sentence, ‘One-half of Multnomah County’s impoverished persons reside in the PPS Head Start service area’, ‘One-half’ was changed to ‘over one-third’; ‘...47 percent of currently enrolled families speak a language other than English....’ was changed to ‘...50 percent of currently enrolled families....’; two other percentages were revised, but the original trends still hold true.

Finding 2. Need for services for children and families exceeds current capacity.

The finding was reworded to make it clear that the data describe children and not children’s households.

The poverty rate for children under 6 years was changed from 26 percent to 23 percent; and 66 percent of impoverished children living with single-parents was changed to 69 percent.

Part of a sentence was eliminated: ‘..the percentage served in PPS Head Start’s service area is estimated to be even less at 50 percent’ because the percentage increased to 67 percent in 2005. The decrease of the percentage served in Multnomah County was mentioned to replace the wording that was removed.

The percentage of Head Start eligible children and families being served in Multnomah County is about 48 percent (the 2005 Community Assessment reports 48 percent, but the addendum reports 61 percent because of a fluctuation).

Finding 3. Families with young children are in need of affordable child care.

The sentence about the number of persons in the labor force increasing was eliminated (the first addendum’s data and estimates did not support this statement), but re-inserted because it is supported by 2005 data.

A sentence was changed to incorporate that the unmet child care need increased from 2003 to 2005.

Finding 4. More children and families speak a language other than English in the home.

The finding was reworded to reflect how the new data are combined: instead of describing persons who speak little or no English, persons are described as not speaking English 'very well'. The new data still support the finding.

Information about enrolled families attending ESL classes offered by PPS Head Start is included.

Finding 5. Mental health needs of children in the PPS Head Start program have increased substantially.

In the first addendum, information about enrolled children receiving mental health assessments is reported instead of enrolled children who were referred for mental health support. Those receiving a mental health assessment was 11 percent in 2004, an increase from 5 percent in 2001.

In this second addendum, information about the number of enrolled children referred for and/or receiving outside mental health services replaced the data mentioned above because the number of children receiving mental health assessments in 2005 does not support this finding.

The number of children in Multnomah County estimated to have a mental disability replaced the number of children receiving mental health services. Recent data about children receiving mental health services do not support this finding as well as the mental disability data.

Finding 6. The enrollment of three year olds decreased from 21% in 03-04 to 18% in the last three years.

This information was obtained from the PIR data (the original finding stated the decrease was from 19 percent to 12 percent).

The finding was changed to: 'Three-year-olds have represented only one-quarter, or less, of total enrollment since at least 1996.'

Finding 7. The number of Head Start eligible children in the service area has increased.

In the first addendum, the description of this finding was changed to include information about the increase in the number and percentage of Head Start eligible children during 2000-2004. The statement about the closure of the Early Childhood Education Centers was eliminated because the data in this document and the Community Assessment do not support it as a finding.

Mention of the magnitude of change in number of eligible children not served by Head Start was eliminated because recent data show that the magnitude of change has decreased. However, an increase is still seen in the number of eligible children not being served by Head Start, and the continuation of the increase since 2000 was stressed. A statement about the proportion of eligible children that were not being served in 2005 was included (one-third).

Recommendation 2. Expand services to children and families whose parents work or are in school.

Previously, the reasoning for this recommendation suggested the need for full day classrooms and longer hours in PPS Head Start's single session model. The suggested need was changed to 'extended day and double session models' to more accurately indicate the program services needed.

In the first addendum, information about the unmet need of care for children whose parent(s) work was included in this recommendation. Also, a preface about declining unemployment rates was added to the statement about the increasing number of eligible families who work.

Recommendation 7. Ongoing evaluation of the implications of closing PPS Early Childhood Education Centers on the waitlists of eligible children in the Jefferson Cluster..

This recommendation was changed to reflect a districtwide impact on PPS Head Start waitlists rather than an impact from one high school cluster (Jefferson Cluster). PPS' pre-K program is expanding and PPS is enrolling more pre-K children throughout the district.

The recommendation was changed to 'Ongoing evaluation of the implications of PPS enrolling pre-K children throughout the district on Head Start waitlists'.

In the first addendum, a rationale for this recommendation was added and reference to the decrease in Early Childhood Education Centers in the PPS Jefferson Cluster was included.

Changes to the Demographic and Socioeconomic Characteristics of the PPS Head Start Service Area and Multnomah County

In all tables and charts in the demographic and socioeconomic section of the current report, data values for 2005 are reported in addition to the previous 1996 and 2000 data. Trends were re-analyzed and, if necessary, interpretive text was revised. In the previous report and addendum, average annual growth rates were included from 1996 to 2000 and from either 2000 to 2003, or 2000 to 2004. The current report includes growth rates from 2000 to 2005. The revised tables, charts, and analysis are on pages 13-39 of this document.

Listed below are the 2005 Community Assessment Report's individual tables and charts in which significant changes in the results or trends occurred as a consequence of revising the data. If a table or chart is not included in this section, or if particular trends are not mentioned, any differences in the interpretation of the data or trends from the 2005 Community Assessment Report or in the first addendum are insignificant.

Tables 2 and 3. Population by Race and Hispanic Origin

Blacks and Hispanics represent the largest proportions of the ethnic minority population in the service area. During 2000-2003, the black population captured the largest share of the service area's total population.

Figure 3. Births

The percentage of births to white mothers remained about the same during 2000 to 2004 with slight fluctuations. In previous years it decreased. The 2005 Community Assessment Report stated that overall, the number of annual births to white mothers had decreased since 1996, which is still true.

The number of births to Hispanic mothers still represents the greatest share of all births to ethnic minority mothers, however, the number of births to Hispanic mothers decreased slightly each year from 2001 to 2004, which is a reversal of the 1996-2001 trend of increasing Hispanic births. Even though in 2002 there was a slight drop in Hispanic births, the original Community Assessment Report noted that from 1996 to 2001 they had increased. However, the number of Hispanic births in 2004 was still greater than in 1996.

Figures 7a and 7b. Age-specific Fertility Rates in Multnomah County, 1996 to 2000, and 2000 to 2004

The greatest decline in fertility was experienced by women in the 20-24 age-group rather than the 25-29 age group as stated in the original Community Assessment Report.

Table 4. Households

The increase in the number of households occurred at a slightly higher rate than population in the service area and in Multnomah County from 2000-2005. In previous years, their growth rates were about the same as reported in the 2005 Community Assessment Report.

Table 8. Mobility of Persons 5 Years of Age and Over

The percentage of movers that came from out-of-state to Multnomah County decreased slightly from 2000 to 2005. The percentage in 2003 was about the same as in 2000 as shown in the original Community Assessment Report. However, in the service area, the percentage of movers from out-of-state still continued a similar upward trend from 2000 to 2005 as the original report shows during 2000-2003.

Table 9. Employment Status for Persons 16 Years and Over

Since 1996, the proportion of persons that are participating in the labor force has been increasing slightly. The original Community Assessment Report states that it had been slightly declining.

Table 10. Employment Status for Women with Children

The unemployment rate for women with children under 6 years of age is estimated to be lower than the rate for all women and for the total labor force. The unemployment rate for women with children under 6 years of age in the 2005 Community Assessment Report is about the same as the total labor force.

The unemployment rate for women with young children decreased from 2000 to 2005, but so did the labor force participation rate. The opposite trends in the 2005 Community Assessment Report were thought to be true during 2000-2003.

Table 11. Persons Employed by Occupation

An increase of at least 15 percent in the farming, forestry, and fishing occupations was seen from 2000 to 2005 in both the service area and in the County. The 2005 Community Assessment Report shows a decrease from 2000 to 2003.

Table 12. Household Income Levels in 2005 Dollars

In 2005, the service area had higher proportions of households with income in levels below \$75,000 than Multnomah County. The original Community Assessment Report states that this situation was true for income levels under \$25,000 in 2003, although it also applied to all income levels under \$75,000.

Table 15. Households (HH) and Persons with Income Below Poverty Level

The poverty rate for persons in 2005 is slightly higher than the 2003 rate shown in the 2005 Community Assessment Report for the service area, but slightly lower for Multnomah County.

Table 16. Children in Household with Income in past 12 Months Below the Poverty Level

The poverty rate for children under 6 years old in 2005 is lower than the 2003 rate shown in the 2005 Community Assessment Report for the service area by about 1 percentage point and about a half of a point higher than for the County .

Table 17. Children in Households with Income Below Poverty by Family Type

The number of impoverished children residing in single-father families in Multnomah County increased from 2000 to 2004. The 2005 Community Assessment Report shows a decrease from 2000 to 2003, and a decrease is also calculated from 2000 to 2005.

Table 18. Head Start Eligible Children

The proportion of Head Start eligible children not being served in 2004 is estimated to be 50 percent in the service area and 56 percent in Multnomah County, much higher than estimated for 2003 in the 2005 Community Assessment Report. The estimate of eligible children that were not served in 2005 is closer to the figures in the original 2005 Community Assessment Report.

Table 31. Child Care (CC) Availability, 2004

The estimated need for child care slots for children under 6 years of age in 2005 is 30,300 in Multnomah County; the estimated need is 21,200 in Portland. These numbers increased from 2003 to 2005. The number of children potentially needing child care has increased in Multnomah County during the past year, but decreased in Portland. (2005 data on the number of child care facilities and slots are not available.)

Changes to the Findings from the Program Information Reports (PIR)

The most recent available PIR data (for the 2005-06 school year) were added to the PIR dataset used in the 2005 Community Assessment Report and in its first addendum. After analyzing the new data, the PIR findings were revised. The revised findings are on pages 40-41 in this document.

The PIR findings with significant changes in 2005-06 are listed below.

PIR Findings with Significant Changes

*Of the PPS Head Start families needing full-day, full-year childcare, 77 percent received this service, which is up from 2004-05 when only 9.6 percent were reported to have received full-day, full-year childcare.

*The percentage of enrolled children covered by public health insurance increased considerably in 2005-06. At least twice as many children were enrolled in the Child Health Insurance Program (CHIP) than in any other year.

*Over 90 percent of PPS Head Start children received medical and dental screenings – the highest percentage since at least 2000-01.

*The most common medical problem for which enrolled children were treated in previous years was asthma, not the condition of being overweight, as reported in the first addendum. However, in 2005-06 only 9% percent of the children receiving treatment were being treated for asthma.

*Almost 90 percent of PPS Head Start children in 2005-06 were up-to-date with immunizations – an increase from 41 percent in 2004-05.

*There has been a trend of decreasing two-parent families but the 2005 Community Assessment reported an increase in two-parent families which is also seen in the 2005-06 data with 56 percent two-parent families.

*The percentage of heads of households in enrolled families, with at least a high school diploma/GED in 2005-06 was 76 percent, the highest since at least 2001-02. This represents an increase of over 30 percentage points from 2004-05.

*The data for 2004-05 show that there was a significant increase in the number of parents that were in job training or school, though the 2005 Community Assessment reports that less than 10 percent of enrolled families had a parent in job training or school. In 2005-06 the share of parents enrolled in job training or school was less than 10 percent, similar to the 2005 Community Assessment.

*Eighty-three percent of PPS Head Start families have at least one employed parent, which is higher than 65 percent reported in 2004-05.

*One-hundred percent of 4-year old children enrolled in PPS Head Start in 2005-06 were projected to enter kindergarten the following year. This is the highest percentage since at least 2000-01.

Changes to the Initial Findings from Demographic and Socioeconomic Data for the Service Area and County

After the new data were analyzed, the initial findings in the 2005 Community Assessment Report and its addendum were examined for validity. A few of the initial findings were modified so that the new data support them. The revised initial findings are on pages 42-44 of this document.

The initial findings with significant changes are listed below.

Minorities

- Blacks no longer represent the largest minority group in the service area. The growth that the Hispanic population experienced from 2000 to 2005 increased the Hispanic share of the total population up to the level that Blacks currently represent (9.0 percent of the total population). During 2000-2003, the black population captured the largest share of the service area's total population.

Births

- The greatest decrease in fertility during 1996-2005 occurred to women in the 20-24 age group. The 2005 Community Assessment Report stated that women of ages 25-29 experienced the greatest decline.

Households

- The increase in the number of households occurred at a slightly higher rate than population in the service area and in Multnomah County from 2000-2005. The original report noted that during 2000-2003, housing and population had similar growth rates.

Employment

- The unemployment rate is estimated to have dropped from 10 percent in 2003 - reported in the 2005 Community Assessment - to 8.5 percent in the service area in 2005.
- The proportion of persons that are participating in the labor force increased slightly from 2000 to 2005. The 2005 Community Assessment Report also shows an increase from 2000 to 2003, however, the first addendum stated that the proportion of persons that are participating in the labor force decreased from 2000 to 2004.

Income and Poverty

- Poverty rates for the general population increased from 2003 to 2005. In 2004, the rate for children under 6 years of age in the service area was 26 percent, 3 percentage points higher than the rate reported in the 2005 Community Assessment. The rate for children under 6 years of age dropped in 2005 to 23 percent, closer to the rate in the original report.

Special Needs Children

- About one-third of eligible 3-4 year olds in the service area did not receive Head Start services in 2005. The 2005 Community Assessment data show that proportion to be one-quarter.
- After a few years without significant change, in 2004 there was an increase in the number of children residing in out-of-home care and in the number of child abuse victims in Multnomah County. An increase was also seen in 2005.
- The estimated need for child care slots for children under 6 years of age in Multnomah County increased from 29,140 in 2003 to 30,300 in 2005, which is an increase of 1,160 needed slots.

**NEEDS OF CHILDREN AND FAMILIES –
KEY OVERALL FINDINGS AND RECOMMENDATIONS (Revised)**

The research findings described in this report are summarized below. Also presented are Portland Public Schools (PPS) Head Start's recommendations for improvements to the services they provide.

Overall Findings

1) PPS Head Start is serving the areas of greatest poverty and diversity.

Over one-third of Multnomah County's impoverished persons reside in the PPS Head Start service area. The poverty rate increased from 13 percent in 2000 to 16 percent in 2005. The population in the PPS Head Start service area has a larger proportion of minority groups than in Multnomah County as a whole. Ethnic minorities represent about 30 percent of the service area's total population and that percentage has increased since at least 1996. In the PPS Head Start program, the percentage of enrolled children that are ethnic minority is almost 80 percent, which increased by 48 percent since 2000. In addition, 50 percent of currently enrolled families speak a language other than English at home. The seven current PPS Head Start Centers are located in North, Northeast and Outer Southeast Portland, areas of greatest poverty and diversity. PPS Head Start 2003-2004 enrollment data show that low income, diverse student population growth is greatest in North and Northeast Portland.

2) Need for services for children and families exceeds current capacity.

The need for services for eligible children and families is increasing. The number of children under six years old is increasing in Multnomah County. About 40 percent of households with children in the PPS Head Start service area are single-parent households and they are increasing at a rapid rate. The number of children under six residing in households with income below the poverty level is increasing in the service area and the proportion that these children represent of all children under six is about 23 percent. Sixty-nine percent of impoverished children under six years old in the service area reside in a single-parent household. These populations make up a large proportion of PPS Head Start's currently enrolled children and families. An increase in single-parent households is expected to increase PPS Head Start's own eligibility pool. Currently only about 48 percent of Multnomah County's eligible children and families are being served in Head Start programs and that percentage has decreased since 2000. The PPS Head Start program has waiting lists for each of the 7 sites, with the longest lists in North and Northeast Portland.

3) Families with young children are in need of affordable childcare.

There is an unmet need for childcare in Portland for children ages 0-5 and that need has increased from 2003 to 2005. It is estimated that at least a few thousand child care slots are needed for these young children.. Despite fairly high unemployment rates, the number of labor force participants in the service area increased from 2000 to 2005, which means there has been an increase in the number of persons residing in the service area that are willing to work. About 57 percent of persons in the PPS service area 25

years old and over have no college degree and many lack the education and training for high wage jobs. About 24 percent, or 32,150 households in the service area had an annual income of less than \$20,000 in 2005. It is expected that when the economy improves and more jobs are available, the number of employed persons with children will increase, and the need for affordable childcare will continue.

4) More children and families speak a language other than English in the home.

The number and percentage of persons who do not speak English very well are increasing in the service area. Those who speak Spanish or an Asian or Pacific Islander language has been increasing since at least 2000. About 50 percent of PPS Head Start children and families speak a language other than English at home. The number who speak Spanish is increasing at the fastest rate with about one-third of current program families speaking Spanish at home. The number of enrolled families attending ESL classes offered by PPS Head Start tripled from 2001 to 2005. In 2005, over one-third of enrolled families attended PPS Head Start ESL classes.

5) Mental health needs of children in the PPS Head Start program have increased substantially.

In 2001, only 5 percent of enrolled children were provided a mental health assessment. In 2004, 11 percent received a mental health assessment. Of those assessed in 2004, 70 percent were referred for mental health services. In Multnomah County, the number of children under six years of age that are estimated to have a mental disability is 2.5%, and the number has increased from 2000 to 2005.

6) Three-year-olds have represented only one-quarter, or less, of total enrollment since at least 1996.

This reflects the larger number of eligible four years olds on the waiting list who are given enrollment priority.

7) The number of Head Start eligible children in the service area has increased.

Since 2000, the number of eligible 3-4 year olds residing in the service area that were not served by Head Start has continually increased. One-third of eligible 3-4 year olds in 2005 were not being served.

Recommendations

1) Expand services to accommodate more children and families.

Although Multnomah County's growth rate is slowing, there are significant numbers of eligible children and families not yet served.

2) Expand services to children and families whose parents work or are in school.

In the service area, at least a few thousand children ages 0-5 in need of a child care program have parent(s) that work, and with declining unemployment rates, it is assumed that the number of eligible families who work is increasing. This suggests a need for options for families including extended day and double session models. Because a significant portion of PPS Head Start families are unemployed or working part time or

seasonally, the need for a part day model continues. There is also a need for stronger childcare information and referral systems and increased community partnerships with childcare providers including wrap around services.

3) Expand services to children and families who speak a language other than English in the home.

As this population continues to increase, PPS Head Start's need for more bilingual/bicultural staff to work with children and families will grow. An increased demand for adult ESL classes among Head Start families is anticipated.

4) Support pre-employment and job training needs.

As more parents return to work, and more are employed at low paying jobs because they lack education or training, the need for adult literacy classes will grow. The need to strengthen PPS Head Start networking with local job training and job placement resources is anticipated.

5) Increase Mental Health support for English Language Learning (ELL) children and families.

Increases in mental health referral and service levels point to the need for increased support in this area, particularly for additional services of bilingual mental health therapists. City and County partnerships need to be explored.

6) Gather further information from current waitlists and enrollment data to answer these questions:

- What is the level of need for extended day classrooms?
- What is the level of need for part day classrooms?
- What models for the above programs would best meet parent needs? Are the current configurations at each site best meeting families' needs?

7) Ongoing evaluation of the implications of Portland Public Schools enrolling PreK children throughout the district on Head Start waitlists.

The increases in the number of Head Start eligible children in the service area and the significant increase in the number of Pre-K programs in PPS District support the necessity for an ongoing evaluation of the impact on PPS Head Start programs and the demand for PPS Head Start services.

**DEMOGRAPHIC AND SOCIOECONOMIC CHARACTERISTICS
 OF THE PORTLAND PUBLIC SCHOOLS HEAD START SERVICE AREA
 AND MULTNOMAH COUNTY (Revised)**

Population

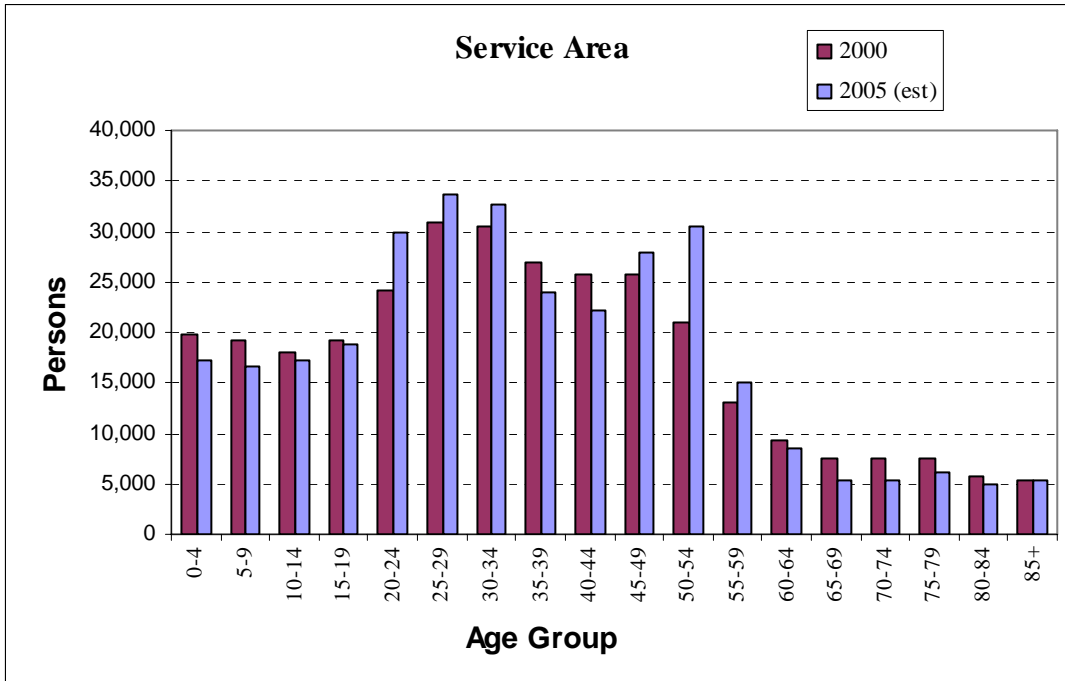
The total population in PPS Head Start’s service area in 2005 is estimated to be about 321,248, which represents 48 percent of Multnomah County’s population. The population of children under 6 years of age is estimated to be approximately 22,930. The service area’s total population has increased since 1996 at an average annual rate of less than one percent; the number of children under six has decreased at a slightly faster pace. The proportion of children ages 0-5 to the total population in the service area has declined by about one percentage point from 1996 to 2005. It is estimated that children under six accounted for about 7 percent of the service area’s total population in 2005. In Multnomah County, the number of children under six has increased since at least 1996, but its proportion to the total county population has slightly fluctuated.

Table 1. Population

Year	Total Population		Population Under 6 Years Old			
	Service Area	Multnomah County	Service Area	% of Population	Multnomah County	% of Population
1996 (est.)*	306,598	625,370	25,210	8.2%	50,021	7.9%
2000	317,681	660,486	23,659	7.4%	50,392	7.6%
2005 (est.)*	321,248	673,154	22,928	7.1%	53,773	8.0%
Avg. Annual Growth Rate 1996 - 2000	0.9%	1.4%	-1.6%		0.2%	
Avg. Annual Growth Rate 2000 - 2005	0.2%	0.4%	-0.6%		1.3%	

*Data from US Census Bureau's American Community Survey for 1996 and 2005 are available for household population only; total population is estimated to account for people living in “group quarters” such as therapeutic communities.

Figure 2. Service Area Population, by Age Group



Race and Ethnicity

In general, the white population has been decreasing and the combined ethnic minority population has been increasing in both the service area and in Multnomah County. In the service area, it is estimated that the ethnic minority population increased by 25.3 percent from 1996 to 2005 with an average rate of 2.5 percent per year.

From 2000 to 2005, the population of all ethnic minority groups in the service area except “other race” and Native American have been increasing in number. The Hispanic group grew at the fastest pace with an average annual rate of 4.4 percent.

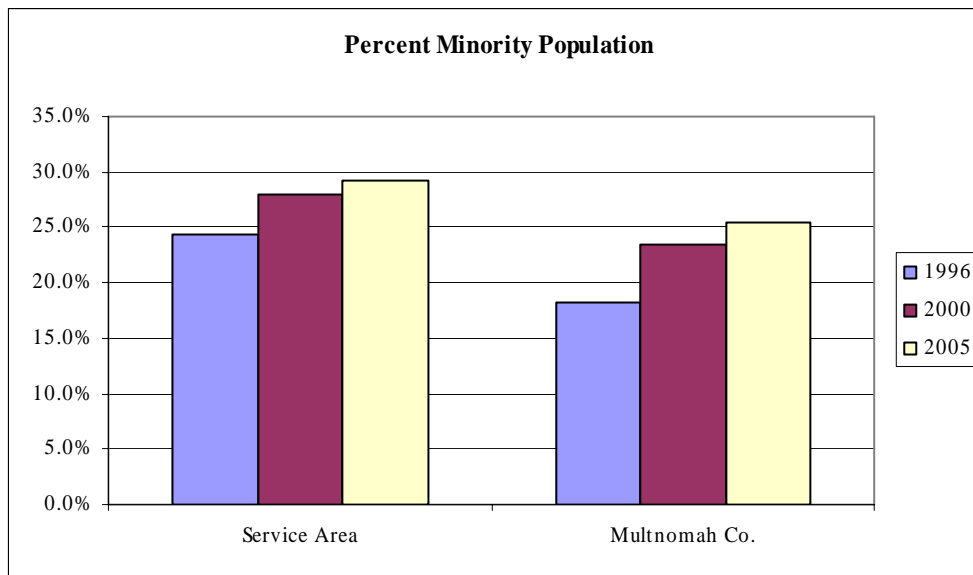
Table 2. Population by Race and Hispanic Origin

	White	Black/African American	Native American	Asian or Pacific Islander	Other (including multiple races)	Hispanic	Total Minority
Service Area							
1996	231,712	34,714	3,517	20,167	1,219	15,270	74,886
2000	228,908	28,498	3,036	21,209	12,762	23,269	88,773
2005 (est.)	227,409	28,804	2,145	22,751	11,163	28,976	93,838
Avg. Annual Growth Rate 1996 - 2000	-0.3%	-4.9%	-3.7%	1.3%	58.7%	10.5%	4.3%
Avg. Annual Growth Rate 2000 - 2005	-0.1%	0.2%	-6.9%	1.4%	-2.7%	4.4%	1.1%
Multnomah County							
1996	510,867	42,000	6,619	35,764	1,840	28,280	114,503
2000	505,492	36,592	5,754	39,550	23,491	49,607	154,994
2005 (est.)	501,615	36,903	4,247	44,838	20,553	64,997	171,539
Avg. Annual Growth Rate 1996 - 2000	-0.3%	-3.4%	-3.5%	2.5%	63.7%	14.0%	7.6%
Avg. Annual Growth Rate 2000 - 2005	-0.2%	0.2%	-6.1%	2.5%	-2.7%	5.4%	2.0%

*Some difference in numbers between 1996 and 2000 is attributed to a change in the way racial groups were counted by the US Census Bureau; beginning in 2000, persons can identify themselves as multi-racial; 'other' race in 2000 and 2005 include persons in the 'other' race category plus those identifying themselves with 2 or more races.

The proportion of the total population that ethnic minorities represent has consistently been higher in the service area than in Multnomah County during 1996 to 2005. In the service area, ethnic minorities represent about 30 percent of the total population.

Figure 3. Percent Minority Population*



*Minority population was calculated by summing all people who are non-White and/or of Hispanic origin

In 2005, whites represented less than three-quarters of the total population in both the service area and in Multnomah County. The share that whites represent of the total population decreased from 1996 to 2005 by almost 5 percentage points, while the shares that Asians/Pacific Islanders and Hispanics represent have increased since at least 1996. Of the minority groups in the service area, blacks and Hispanics capture the highest portions, followed by Asians/Pacific Islanders.

Table 3. Racial/Ethnic Groups as Percent of Total Population

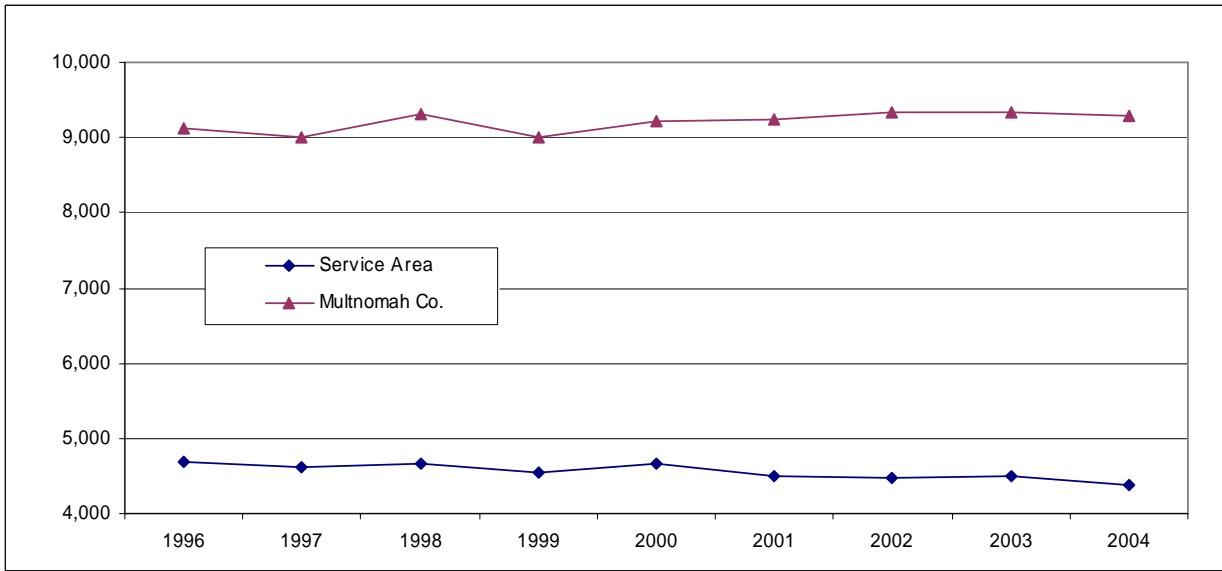
	% White	% Black/African American	% Native American	% Asian or Pacific Islander	% Other (including multiple races)	% Hispanic	Total Minority
Service Area							
1996	75.6%	11.3%	1.1%	6.6%	0.4%	5.0%	24.4%
2000	72.1%	9.0%	1.0%	6.7%	4.0%	7.3%	27.9%
2005 (est.)	70.8%	9.0%	0.7%	7.1%	3.5%	9.0%	29.2%
Multnomah County							
1996	81.7%	6.7%	1.1%	5.7%	0.3%	4.5%	18.3%
2000	76.5%	5.5%	0.9%	6.0%	3.6%	7.5%	23.5%
2005 (est.)	74.5%	5.5%	0.6%	6.7%	3.1%	9.7%	25.5%

Births

In 2004*, there were about 4,375 births in the service area. The number of births in the service area has decreased from 1996 to 2004 by 325, or by 6.9 percent. The average annual rate of decrease has been just under one percent, or by about 40 fewer births per year. Births increased in Multnomah County during the same time period by 1.9 percent with an average annual increase of about 20 births per year.

* The most recent year for which data are available is 2004.

Figure 4. Births Per Year, Multnomah County and PPS Head Start Service Area, 1996-2004



From 1996 to 2004, the number of births identified as white has decreased and conversely, the number of combined ethnic minority births has increased. Ethnic minority births accounted for 35 percent of all births in the service area in 2004. Of the ethnic minority groups, most births have occurred in the Hispanic population group. In 2004 there were almost 200 more Hispanic births than in 1996. The number of births to blacks has decreased since 1996, while births to Asians, Native Americans, and ‘other’ race have remained fairly stable. The percentage of births in the service area by race/Hispanic origin is shown in the charts below.

Figure 5a. White/Minority Births (%)

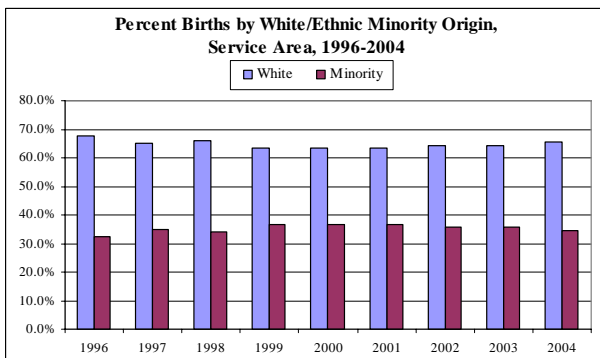
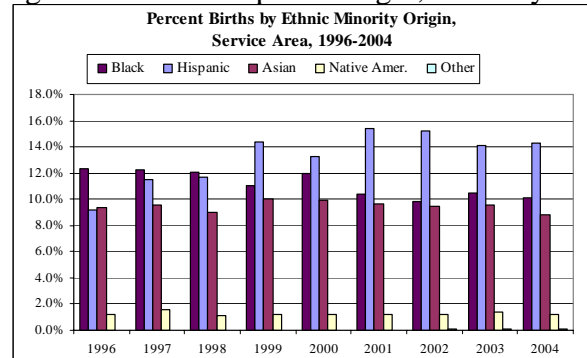
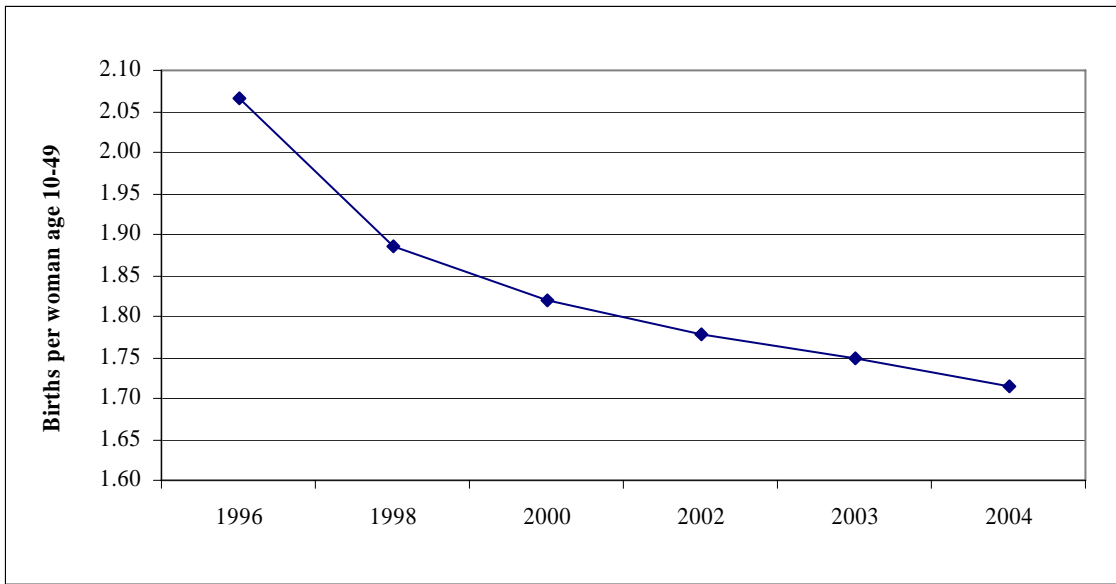


Figure 5b. Race/Hispanic Origin, Minority Births (%)



The fertility rate and its trends for the service area are believed to be similar to fertility in Multnomah County. The total fertility rate for the County has continually decreased every year since at least 1996. The rate at which women bear children declined from an average of 2.06 births per woman of child-bearing age in 1996 to 1.71 births in 2004.

Figure 6. Multnomah County Fertility: Births per Woman Age 10-49, 1996-2004



While there was an increase in the number of births to women of older ages from 1996 to 2004, a decrease in fertility was experienced by those in the under-30 age groups. The greatest decrease during the time period occurred in the 20-24 age group. The charts below show the number of births per 1,000 women by age-group.

Figure 7a. Age-specific Fertility Rates, Multnomah County, 1996-2000

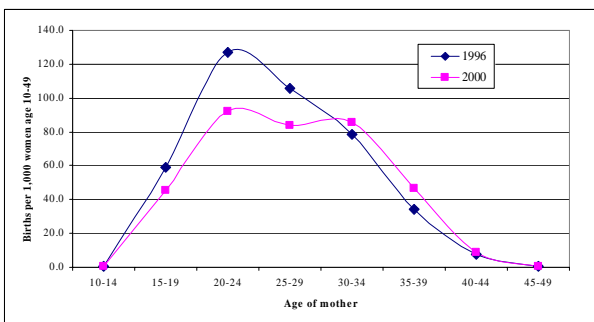
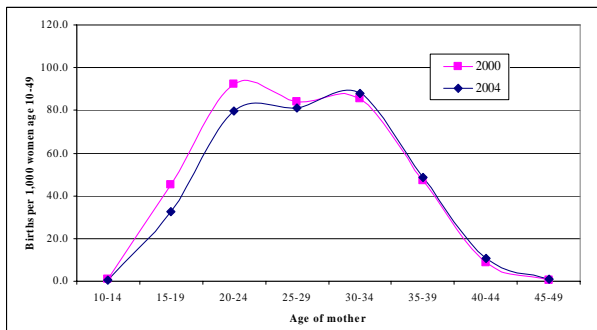


Figure 7b. Age-specific Fertility Rates, Multnomah County, 2000-2004



Households

The number of households in the service area in 2005 is estimated to be 136,504 with an average annual growth rate since 1996 of less than one percent. Growth rates are slightly higher in Multnomah County. The number of households had been increasing at similar rates as population in the service area and in the County from 1996 to 2000, but during 2000-2005, the growth rate of households outpaced population in both areas. The average number of persons per

household is estimated to have declined in the service area from 2.35 to 2.30 during 2000-2005, and from 2.37 to 2.32 in the County.

Table 4. Households

Year	Total Households		Persons per Household	
	Service Area	Multnomah County	Service Area	Multnomah County
1996	127,613	260,797	2.36	2.34
2000	132,141	272,098	2.35	2.37
2005*	136,504	282,989	2.30	2.32
Avg. Annual Growth Rate 1996-2000	0.9%	1.1%		
Avg. Annual Growth Rate 2000-2005	0.6%	0.8%		

*Service area figures are estimated.

Of all households in the service area and in Multnomah County, family households with children represent 23.7 percent and 27.5 percent respectively. The percentage of single-parent households increased from 2000 to 2005 in both areas while married-couple households with children decreased (see Tables 5 and 6). The share of single-parent households is around 39 percent in the service area, higher than in the County (36 percent).

Table 5. Children's Households by Family Type, Service Area (children under 18)

Service Area	Family Households w/ Children	% of All HH*	Married-Couple Families	% of Children's HH	Unmarried Male Householder	% of Children's HH	Unmarried Female Householder	% of Children's HH
1996	35,859	28.1%	21,437	59.8%	2,862	8.0%	11,560	32.2%
2000	33,043	25.0%	20,815	63.0%	2,855	8.6%	9,373	28.4%
2005 est.	32,394	23.7%	19,804	61.1%	2,863	8.8%	9,727	30.0%
Avg. Annual Growth Rate 1996-2000	-2.0%		-0.7%		-0.1%		-5.2%	
Avg. Annual Growth Rate 2000-2005	-0.4%		-1.0%		0.1%		0.7%	

*HH=households

Table 6. Children's Households by Family Type, Multnomah County (children under 18)

Multnomah County	Family Households w/ Children	% of All HH*	Married-Couple Families	% of Children's HH	Unmarried Male Householder	% of Children's HH	Unmarried Female Householder	% of Children's HH
1996	72,969	28.0%	47,803	65.5%	5,688	7.8%	19,478	26.7%
2000	72,114	26.5%	48,709	67.5%	5,806	8.1%	17,599	24.4%
2005 est.	77,740	27.5%	50,064	64.4%	6,078	7.8%	21,598	27.8%
Avg. Annual Growth Rate 1996-2000	-0.3%		0.5%		0.5%		-2.5%	
Avg. Annual Growth Rate 2000-2005	1.5%		0.5%		0.9%		4.1%	

Language and Ability to Speak English

The number of persons who do not speak English very well is increasing in both the service area and in the County. It is estimated that in 2005 they represented about 10 percent of the population 5 years of age and older in both areas. Approximately 80 percent of those not speaking English spoke either Spanish or an Asian/Pacific Islander language at home. The number of Spanish speaking persons who do not speak English very well are growing at the fastest rate.

Table 7. Ability to Speak English and Language Spoken at Home

	Persons 5 Yrs and Over Who Speak English Less than 'Very Well'				% of Persons 5 Yrs and Over Who Speak English Less than 'Very Well'			
	Total Persons	Speak Spanish at Home	Speak an Asian/Pacific Islander Language at Home	Speak a Language Other than Spanish or Asian/Pacific Islander at Home	Total Persons	Speak Spanish at Home	Speak Asian/Pacific Islander Language Home	Speak Other than Spanish or Asian/Pacific Islander Language at Home
Service Area								
1996	23,520	5,538	11,257	6,725	8.2%	27.3%	49.1%	23.%
2000	28,457	10,008	11,921	6,529	9.6%	35.2%	41.9%	22.%
2005 (est.)	30,652	12,329	12,302	6,021	10.1%	40.2%	40.1%	19.%
Avg. Annual Growth Rate 1996-2000	4.8%	14.8%	1.4%	-0.7%				
Avg. Annual Growth Rate 2000-2005	1.5%	4.2%	0.6%	-1.6%				
Multnomah Co.								
1996	35,585	9,869	15,284	10,432	6.1%	31.6%	42.1%	26.%
2000	55,005	21,686	18,275	15,044	8.9%	39.4%	33.2%	27.%
2005	63,637	27,823	19,991	15,824	10.2%	43.7%	31.4%	24.%
Avg. Annual Growth Rate 1996-2000	10.9%	19.7%	4.5%	9.2%				
Avg. Annual Growth Rate 2000-2005	2.9%	5.0%	1.8%	1.0%				

Mobility

Over half of the population 5 years old and over in the service area and in Multnomah County moved within the last five years. Of those who moved, the largest percentage (more than half) moved from within Multnomah County followed by those who moved from out-of-state. In the service area, the percentage of persons who moved from out-of-state has been increasing, but has decreased very slightly in Multnomah County.

In 2005, almost 19 percent of persons residing in the service area moved within the previous 12 months. Most movers stayed in Multnomah County.

Table 8. Mobility of Persons 5 Years Old and Over

Residence 5 years ago	Same House (% of population)	Different House (% of population)	Previous Residence of Movers			
			Different House within Multnomah County	Another Oregon County	Another State, Puerto Rico, or US Territory	Foreign Country
Service Area						
1996	47.8%	52.2%	56.5%	14.1%	22.5%	6.9%
2000	46.2%	53.8%	54.9%	13.4%	24.8%	6.9%
2005 est.	44.2%	55.8%	52.8%	12.5%	27.9%	6.8%
Multnomah County						
1996	47.3%	52.7%	54.6%	15.5%	23.6%	6.3%
2000	44.9%	55.1%	54.2%	14.8%	23.5%	7.5%
2005 est.	42.0%	58.0%	53.6%	14.0%	23.2%	9.3%
Residence 1 year ago	Same House (% of population)	Different House (% of population)	Previous Residence of Movers			
			Different House within Multnomah Co.	Another Oregon County	Another State, Puerto Rico, or US Territory	Foreign Country
Service Area						
2004 est.	84.5%	18.6%	63.2%	14.1%	20.2%	2.5%
2005 est.	82.5%	20.5%	62.5%	13.4%	20.6%	3.4%
Multnomah County						
2004 est.	80.7%	19.3%	63.7%	15.7%	17.2%	3.3%
2005	78.7%	21.3%	63.0%	15.1%	17.5%	4.4%

Educational Attainment

It is estimated that in 2005, about 127,200 persons, or 57 percent of persons 25 years of age and over in the service area did not hold a college degree. Of this population group, 75,000 had not attended college at all. Of persons 25 years and over in the service area, about 31,680, or 14.2

percent of the population, had not received a high school diploma (including a GED), or had only reached a 9th grade level of education.

In the service area in 2005, the highest proportion of persons 25 years of age and older is estimated to have earned a bachelor's degree (25.1 percent). From 2000 to 2005, it is estimated that there was an increase in the number of persons 25 years of age and older living in the service area and in Multnomah County that obtained a college or more advanced degree. There was a decrease in the number of persons with lower levels of education.

In 2005, it is estimated that a higher percentage of persons in the service area did not hold a high school diploma (including GED) than in Multnomah County (14.2 percent vs. 12.9 percent).

Figure 8. Educational Attainment in the Service Area

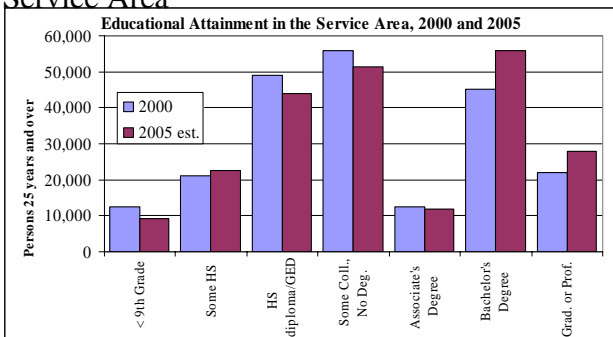
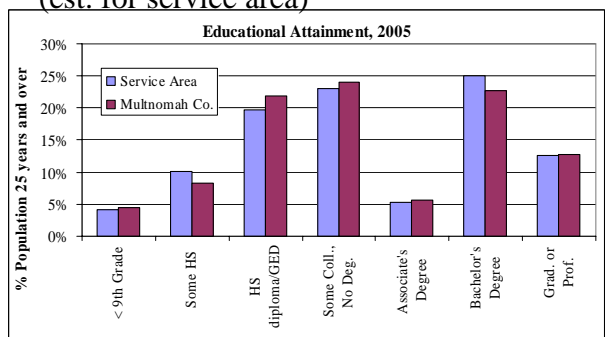


Figure 9. Educational Attainment, 2005 (est. for service area)



Employment and Income

The proportion of persons ages 16 years and older that are in the work force increased in the service area from 68 percent in 1996 to 71 percent in 2005. The increase in the service area is estimated to be slightly higher than in the County.

The number of employed persons increased from 1996 to 2000, but decreased from 2000 to 2005 in both the service area and in Multnomah County. The number of unemployed persons in the service area increased during both time periods, but the rate of increase was slower during 2000-2005. The unemployment rate in the service area is estimated to be 8.5 percent, and although the unemployment rate in the service area was higher in 2005 than it was in 2000, the 2005 unemployment rate is estimated to be lower than it was in 2003 (about 10 percent) and is expected to continue to decline. The unemployment rate in the service area has been higher than the County rate since at least 1996.

Table 9. Employment Status for Persons 16 Years and Over

	Employed Persons	Unemployed Persons	Persons in Labor Force	Persons Not in Labor Force	Unemployment Rate
Service Area					
1996	153,705	7,674	161,380	76,811	4.8%
2000	168,270	12,226	180,496	76,393	6.8%
2005 (est.)	167,723	15,611	183,335	76,124	8.5%*
Avg. Annual Growth Rate 1996-2000	2.3%	11.6%	2.8%	-0.1%	
Avg. Annual Growth Rate 2000-2005	-0.1%	4.9%	0.3%	-0.1%	
Multnomah Co.					
1996	314,792	13,859	328,651	155,147	4.2%
2000	341,522	23,432	365,188	163,863	6.4%
2005	340,374	29,916	370,931	163,285	8.1%*
Avg. Annual Growth Rate 1996-2000	2.0%	13.1%	2.6%	1.4%	
Avg. Annual Growth Rate 2000-2005	-0.1%	4.9%	0.3%	-0.1%	

*The unemployment rate for the service area was estimated based on the 2005 rate obtained for Multnomah County from the US Census Bureau's American Community Survey. The Bureau of Labor Statistics (BLS) reports the Multnomah County unemployment rate for 2005 as 6.2%. The unemployment rates in 1996 and 2000 also differ from those reported by BLS, but the difference is not as great as in 2005. The difference in rates is likely due to a one-year lag time in the ACS data and because the BLS rate is an annual average of the monthly rates during the year.

Women represent approximately 46 percent of the total labor force in the service area. The percentage of women in the labor force did not change much from 1996 to 2005, and was about one percentage point higher than for Multnomah County. During the same time period, the employment patterns for women have been similar to those for the total labor force, however the unemployment rate for women has typically been slightly lower than for all labor force participants. The unemployment rate for women in the service area since at least 1996 is estimated to be higher than the rate for the County.

For women with children under 6, the employment patterns are slightly different than for all women. It is estimated that in 2005 the unemployment rate was lower for women with children under 6 than for all women. This situation represents a change from 2000. In 2000, the reverse was true - women with children under 6 years of age had an unemployment rate higher than all women. Additionally, since 2000, the rate of unemployed women with children under 6 has been lower in the service area than in the County.

Table 10. Employment Status for Women with Children Under 6 Years of Age

Females 16 and Over with Children Under 6 Years	In Labor Force, Employed or in Armed Forces	% of all Females w/ Children <6 yrs.	In Labor Force, Unemployed	% of all Females w/ Children <6 yrs.	Not in labor force	% of all Females w/ Children <6 yrs.	Unemployment Rate
Service Area							
1996	6,473	63.3%	274	2.7%	3,480	34.0%	4.1%
2000	6,193	63.1%	449	4.6%	3,168	32.3%	6.8%
2005 est.,	6,198	62.5%	387	3.9%	3,333	33.6%	5.9%
Avg. Annual Growth Rate 1996-2000	-1.1%		12.3%		-2.3%		
Avg. Annual Growth Rate 2000-2005	0.0%		-3.0%		1.0%		
Multnomah Co.							
1996	12,414	64.4%	496	2.6%	6,366	33.0%	3.8%
2000	12,352	62.2%	930	4.7%	6,562	33.1%	7.0%
2005 est.	12,361	61.6%	801	4.0%	6,903	34.4%	6.1%
Avg. Annual Growth Rate 1996-2000	-0.1%		15.7%		0.8%		
Avg. Annual Growth Rate 2000-2005	0.0%		-3.0%		1.0%		

In the service area, from 1996 to 2000 there was an increase in the number of persons employed in most occupations except the farming, forestry and fishing occupations and construction, production, repair, and labor occupations. From 2000 to 2005, some occupations saw an increase and others experienced a decrease. Since at least 1996, there was an increase in numbers of workers in the professional and managerial, sales, and service occupations.

The employment pattern for Multnomah County is similar to the service area except that the workers in the sales occupations in Multnomah County decreased during 1996-2000. In the service area and in Multnomah County, the construction, production, repair, and labor occupations experienced the greatest decrease in the number of employees of all occupations during 1996-2005.

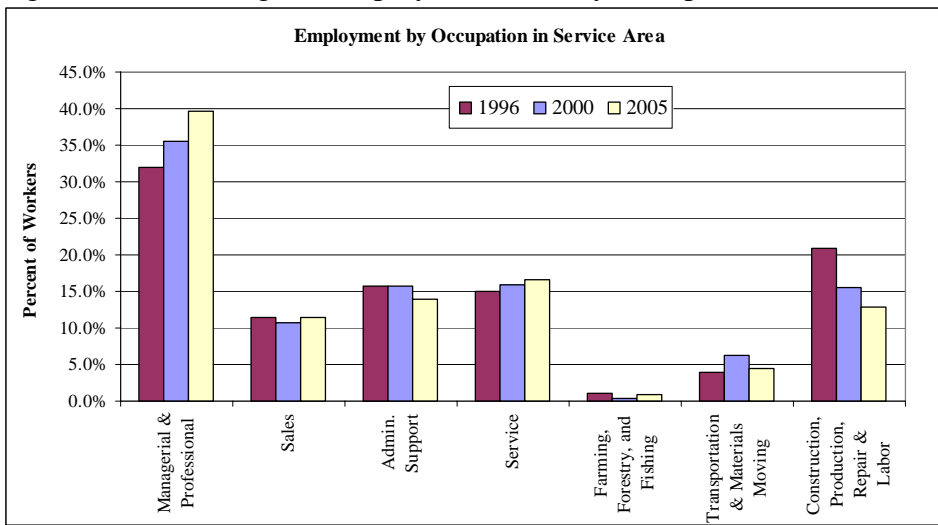
Second Addendum to the 2005 Community Assessment Report
 Portland Public Schools Head Start

Table 11. Persons Employed by Occupation

	Managerial & Professional	Sales	Admin. Support	Service	Farming, Forestry, and Fishing	Transportation & Materials Moving	Construction, Production, Repair & Labor
Service Area							
1996	49,202	17,483	24,136	23,038	1,566	6,167	32,113
2000	59,869	17,981	26,492	26,662	501	10,595	26,170
2005 est.	66,514	19,147	23,468	27,869	1,409	7,633	21,683
Ave. Annual Growth Rate 1996 - 2000	4.9%	0.7%	2.3%	3.7%	-28.5%	13.5%	-5.1%
Ave. Annual Growth Rate 2000-2005	1.8%	0.9%	-2.7%	0.6%	20.4%	-6.9%	-4.1%
Multnomah County							
1996	105,887	39,258	48,568	42,452	3,342	12,315	62,970
2000	121,951	38,496	54,111	51,471	1,371	21,355	52,881
2005	133,668	40,346	47,290	54,730	3,087	15,443	45,810
Ave. Annual Growth Rate 1996 - 2000	3.5%	-0.5%	2.7%	4.8%	-22.3%	13.8%	-4.4%
Ave. Annual Growth Rate 2000-2005	1.3%	0.4%	-3.2%	0.7%	15.7%	-7.0%	-3.4%

Most persons in the service area are employed in the managerial and professional occupations and aside from farming, forestry, and fishing, the fewest are employed in transportation and materials moving occupations.

Figure 10. Percentage of Employed Persons by Occupation in Service Area



Second Addendum to the 2005 Community Assessment Report
Portland Public Schools Head Start

Median household income in the service area in 2005 is estimated to be \$40,270. It is lower than the median household income for Multnomah County, which was \$42,770 in the same year.

In 2005, the estimated percentage of households in all of the annual income categories under \$75,000 is higher in the service area than it is for Multnomah County, and the estimated percentage of households in the higher-level categories is lower (see Table 12 and Figure 11).

About 32,150 households, or 24 percent of all households had an annual income of less than \$20,000 in 2005. The 2005 poverty rate for a family of four is just under \$20,000 per year.

Second Addendum to the 2005 Community Assessment Report
Portland Public Schools Head Start

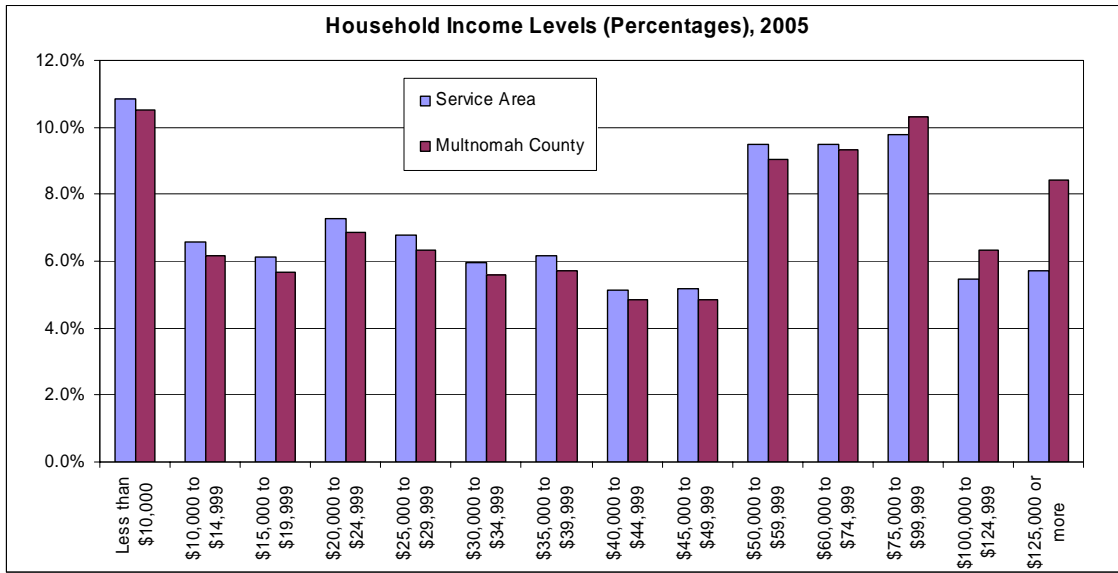
Table 12. Household Income Levels in 2005 Dollars*

Service Area**	Number of Households			Percentage of Households		
	1996	2000	2005 (est.)	1996	2000	2005 (est.)
Less than \$10,000	12,011	10,338	14,817	9.2%	7.8%	10.9%
\$10,000 to \$14,999	8,497	6,856	8,955	6.5%	5.2%	6.6%
\$15,000 to \$19,999	8,689	7,309	8,377	6.7%	5.5%	6.1%
\$20,000 to \$24,999	8,705	7,615	9,924	6.7%	5.8%	7.3%
\$25,000 to \$29,999	9,595	7,964	9,232	7.4%	6.0%	6.8%
\$30,000 to \$34,999	8,523	7,843	8,128	6.5%	5.9%	6.0%
\$35,000 to \$39,999	7,742	8,346	8,438	5.9%	6.3%	6.2%
\$40,000 to \$44,999	7,791	7,749	6,996	6.0%	5.9%	5.1%
\$45,000 to \$49,999	7,048	7,221	7,083	5.4%	5.5%	5.2%
\$50,000 to \$59,999	12,101	12,528	12,977	9.3%	9.5%	9.5%
\$60,000 to \$74,999	13,678	15,329	12,965	10.5%	11.6%	9.5%
\$75,000 to \$99,999	12,497	15,454	13,325	9.6%	11.7%	9.8%
\$100,000 to \$124,999	6,217	8,544	7,487	4.8%	6.5%	5.5%
\$125,000 or more	7,368	9,045	7,801	5.6%	6.8%	5.7%
Total	130,461	132,141	136,504	100.0%	100.0%	100.0%
Multnomah Co.						
	1996	2000	2005	1996	2000	2005
Less than \$10,000	23,189	20,940	29,764	8.9%	7.7%	10.5%
\$10,000 to \$14,999	16,406	13,580	17,413	6.3%	5.0%	6.2%
\$15,000 to \$19,999	16,752	14,230	16,060	6.4%	5.2%	5.7%
\$20,000 to \$24,999	16,649	14,813	19,390	6.4%	5.4%	6.9%
\$25,000 to \$29,999	17,984	15,671	17,897	6.9%	5.8%	6.3%
\$30,000 to \$34,999	16,452	15,330	15,798	6.3%	5.6%	5.6%
\$35,000 to \$39,999	15,430	16,354	16,200	5.9%	6.0%	5.7%
\$40,000 to \$44,999	15,689	15,040	13,731	6.0%	5.5%	4.9%
\$45,000 to \$49,999	13,835	14,171	13,682	5.3%	5.2%	4.8%
\$50,000 to \$59,999	23,972	24,588	25,618	9.2%	9.0%	9.1%
\$60,000 to \$74,999	28,057	30,737	26,350	10.8%	11.3%	9.3%
\$75,000 to \$99,999	26,358	32,501	29,245	10.1%	11.9%	10.3%
\$100,000 to \$124,999	13,175	19,192	17,944	5.1%	7.0%	6.3%
\$125,000 or more	16,850	25,208	23,897	6.5%	9.3%	8.4%
Total	260,797	272,356	282,989	100.0%	100.0%	100.0%

*1996 and 2000 dollars converted to 2005 dollars. The number and percent of households in 1996, 2000, and 2005 represents income earned in 2005 dollars; the data for 1996 and 2000 were adjusted for comparison purposes.

**2005 data are estimated for the service area.

Figure 11. Household Income Levels, 2005 (estimated for service area)



The proportion of households that were receiving public assistance income in the service area was about the same as in the County in 2000. It is estimated that the same is true for 2005, and that the numbers of recipients in both areas significantly dropped. In 2005, about 3,740 households in the service area received public assistance income.

Table 13. Households that Received Public Assistance Income

	Number of Households	% of all Households
Service Area		
1990	10,148	8.2%
2000	6,042	4.6%
2005 (est.)	3,742	2.7%
Multnomah County		
1990	15,836	6.5%
2000	11,467	4.2%
2005	7,974	2.8%

Poverty

Poverty rates declined from 1996 to 2000 in the service area and in Multnomah County, and then increased from 2000 to 2005. The poverty rate for persons is higher than the rate for households. The poverty rate in the service area was higher than the rate for the County in 1996 and 2000, but is estimated to be lower in 2005. However, about 47 percent of the impoverished population in Multnomah County is estimated to reside in the service area. See Table 15 and Figure 12 below.

Second Addendum to the 2005 Community Assessment Report
Portland Public Schools Head Start

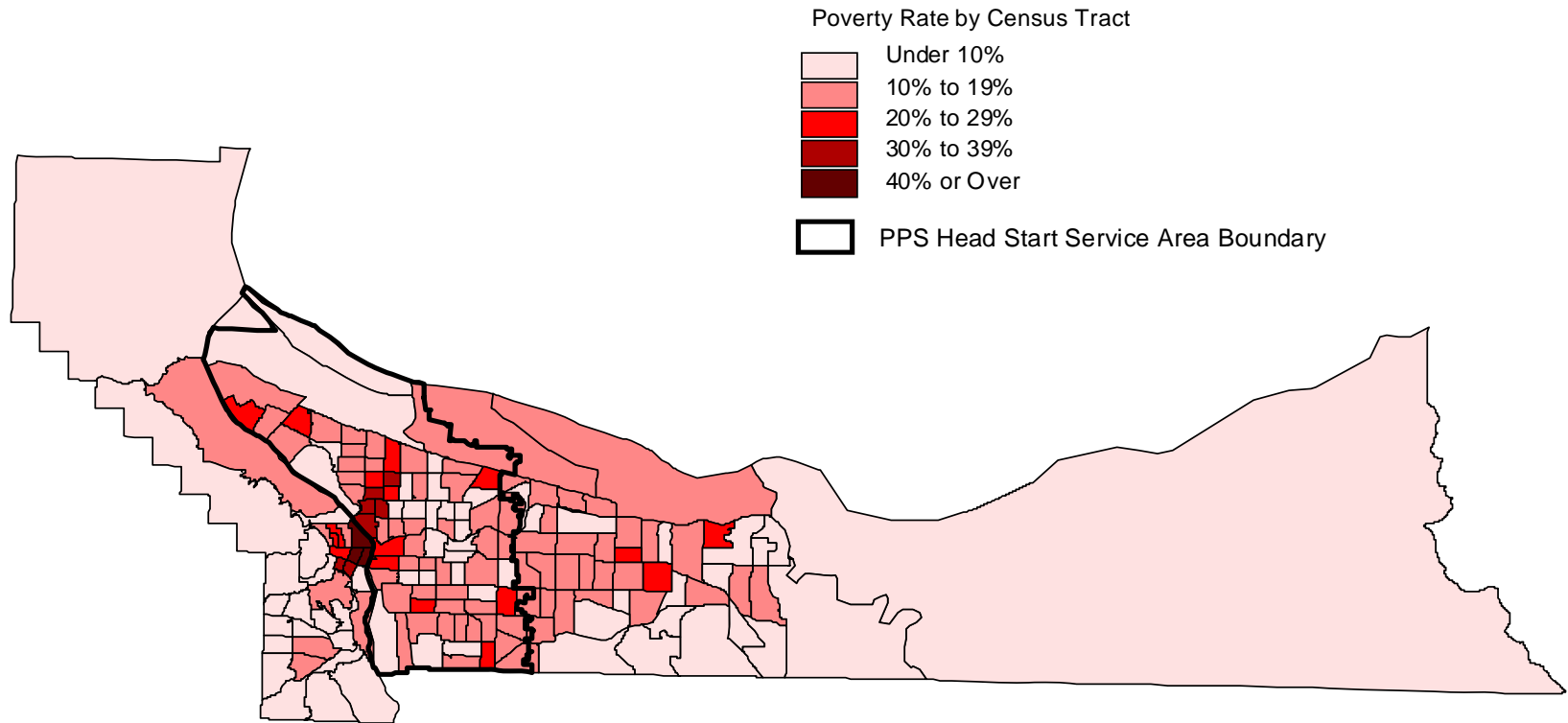
Table 15. Households and Persons with Income Below Poverty Level*

	Households with Income Below Poverty Level	% of all Households	Persons With Income Below the Poverty Level	% of all Persons
Service Area				
2000	15,781	11.9%	42,586	13.4%
2005 est.	21,457	15.7%	52,601	16.4%
Multnomah County				
2000	31,035	11.4%	83,597	12.7%
2005	45,624	16.1%	116,498	17.3%

* The data for 2000 are number of households or persons in 2000 with prior year's income below the Census defined poverty threshold. The 1999 poverty threshold for a family of four was \$17,029; and in 2005, \$19,971. The Census Bureau poverty thresholds used for this table differ from and are higher than the US Dept. of Health and Human Services poverty guidelines, but by no more than \$625 annual income for a family of 4 in any year.

Figure 12. Poverty Rate for Persons by Census Tract, 2000

Poverty in Multnomah County, 2000



Source: U.S. Census Bureau, 2000;
RLIS, Metro, 2005.

Prepared by: Population Research Center,
Portland State University

After experiencing a decrease from 1996 to 2000, the service area saw an increase from 2000 to 2005 in the number of children under 6 years old residing in households where income in the previous 12 months was below the poverty level. The poverty rate for children under 6 years old during the same time periods was 5-10 percentage points higher than for persons of all ages. In 2005, the rate for the service area is about the same as the rate for the County.

Table 16. Children Under 6 in Households with Income Below the Poverty Level*

	Children Under 6 Years Old	% of all Children Under 6 Years Old
Service Area		
1996	6,050	24.0%
2000	4,317	18.2%
2005 (est.)	5,289	23.1%
Avg. Annual Growth Rate 1996 - 2000	-8.4%	
Avg. Annual Growth Rate 2000-2005	4.1%	
Multnomah County		
1996	10,955	21.9%
2000	8,786	17.4%
2005 (est.)	12,740	23.7%
Avg. Annual Growth Rate 1996 - 2000	-5.5%	
Avg. Annual Growth Rate 2000-2005	7.4%	

*Number of children in households with prior year's income below the Census-defined poverty threshold; The Census Bureau poverty thresholds used for this table differ from the US Dept. of Health and Human Services poverty thresholds, but by no more than \$625 annual income for a family of 4 in 1996, 2000, and 2005.

Children under 6 years old residing with a single-mother have consistently represented the greatest proportion of impoverished children residing in all family types in both the service area and in the County since at least 1996. In the service area, the proportion of impoverished children under 6 residing with a single-mother has increased from 1996 to 2005, and the proportion has been greater in the service area than in the County. The number of children under 6 years of age residing in married-couple families that are impoverished was slightly lower in 2005 as in 1996 in the service area. Children under 6 years of age residing with single-fathers whose income was below poverty decreased in the service area, but they are estimated to represent only about 2 percent of all impoverished children under 6 years.

Table 17. Children in Households with Income Below the Poverty Level by Family Type*

Service Area	Married -couple Family	% all Children Under 6 Below Poverty Level	Male Householder	% all Children Under 6 Below Poverty Level	Female Householder	% all Children Under 6 Below Poverty Level
1996	2,075	34%	417	6.9%	3,558	58.8%
2000	1,587	38%	297	7.1%	2,312	55.1%
2005 (est.)	1,630	31%	114	2.1%	3,545	67.0%
Avg. Annual Growth Rate 1996-2000	-6.7%		-8.5%		-10.8%	
Avg. Annual Growth Rate 2000-2005	0.5%		-19.2%		8.5%	
Multnomah Co.						
1996	3,889	35.5%	701	6.4%	6,365	58.1%
2000	3,655	41.6%	729	8.3%	4,402	50.1%
2005 (est.)	5,057	39.7%	633	5.0%	7,050	55.3%
Avg. Annual Growth Rate 1996-2000	-1.5%		1.0%		-9.2%	
Avg. Annual Growth Rate 2000-2005	6.5%		-2.8%		9.4%	

*Number of children in households with prior year's income below the Census-defined poverty threshold; The Census Bureau poverty thresholds used for this table differ from the US Dept. of Health and Human Services poverty thresholds, but by no more than \$625 annual income for a family of 4 in 1996, 2000, and 2005.

The poverty rate for children ages 0-4 is slightly higher than the rate for children ages 0-5. About 25 percent of children ages 3-4 in Multnomah County in 2005 were living in households where the income was below the poverty level. Fifty-two percent of these eligible children were not served by Head Start or Oregon Prekindergarten programs in 2005.

In the service area, about 500 eligible children ages 3-4 are estimated to not have been served by Head Start programs during the 2005-2006 school year.

Table 18. Head Start Eligible Children Ages 3-4

	Multnomah County		Service Area	
	2000	2005	2000	2005 (est.)
Poverty Rate (under 5)	17.6%	24.8%	18.5%	23.4%
Population Ages 3-4	16,800	16,011	7,746	6,569
Eligible Children	2,957	3,975	1,433	1,540
Served in 2000-2001 or 2005-2006 Schl. Yr.	1,814*	1,923	1,005**	1,040
% Served	61.4%	48.4%	70.1%	67.5%
Not Served	1,143	2,052	428	500
% Not Served	38.6%	51.6%	29.9%	32.5%

*Source: Oregon Department of Education, Early Childhood Section, March 2001, and January 2006; Includes children served by served by Head Start or Oregon Prekindergarten Programs.

**Children enrolled in PPS Head Start and Albina Head Start programs, fall 2005.

Indicators of Special Needs and Low-income Children

The number of children that are identified as having a special need or who are receiving services for their special needs serve as possible indicators of the presence of special children’s population groups.

Despite the increase in poverty, the number and percentage of children ages 0-5 years in Multnomah County receiving WIC and TANF services, and public health insurance declined from 2000 to 2005 (see Table 19).

The percentages of children ages 0-5 years in out-of-home care or that were child abuse victims increased in 2005 after remaining somewhat stable in the previous few years. In 2005 they each represented almost 1.5 to 2.0 percent of all children ages 0-5.

Table 19. Special Needs and/or Low-Income Children in Multnomah County

Special Population	# Cases or # Served					% Population Ages 0-5	
	1996	2000	2003	2004	2005	2000	2005
Children (ages 0-5, includes infants) Receiving WIC Services*	13,981	12,732	13,005	13,456	13,409	25.3%	24.9%
Infants only (ages 0-12 months) Receiving WIC Services	n/a	n/a	3,466	3,807	3,755	n/a	n/a
Children (ages 0-5) in Families Receiving TANF**	n/a	2,869	2,259	1,426	1,989	5.7%	3.7%
Medicaid-Eligible Children (ages 0-5)***	26,629	25,685	17,663	n/a	29,717	51.0%	55.3%
Medicaid-Eligible Children Not Receiving Well Child Care (ages 0-5)***	7,755	7,244	6,171	n/a	12,462	28.2% (of eligible children)	41.9% (of eligible children)
Children (ages 0-5) in SCF Custody / Children in Out-of-home Care, point in time****	680	697	679	n/a	813	1.4%	1.5%
Children (ages 0-5) in SCF Custody / Children in Out-of-home Care for the whole year*****	979	990	978	1,005	n/a	n/a	n/a
Child Abuse Victims (ages 0-5)	764	893	756	974	1,059	1.8%	2.0%

* Monthly average; 1996 value is actually a value for 1998.

**Number served in one month each year (May).

***Includes children in households where income is 170% of Federal poverty level and lower; 2000 value is actually a value for 1999; difference between 2000 and 2002 numbers could be attributed to a difference in the method of collecting data.

****Includes emergency shelter, foster care, residential care; data represent numbers for the month of September or December.

*****Estimated numbers for 1996 and 2000 due to a different way of reporting data by SCF prior to 2003.

The number of children with physical, sensory or mental disabilities is estimated to have increased slightly from 2000 to 2005 in Multnomah County.

Table 20. Children with Disabilities in Multnomah County

	Number of Cases			% Population Ages 0-5		
	1996	2000	2005	1996	2000	2005
Children with Disabilities (ages 0-5)						
Children with Physical and Sensory Disabilities*	1,050	673	718	2.1%	1.3%	1.3%
Children with Physical Disabilities	n/a	232	248	n/a	0.5%	0.5%
Children with Sensory Disabilities	n/a	480	512	n/a	1.0%	1.0%
Children with Mental Disabilities	n/a	1,244	1,328	n/a	2.5%	2.5%
Children Receiving Mental Health Services in the Public Mental Health System (0-5)**	742***	939****	532	1.5%	1.9%	1.0%

*Estimated by PRC; difference in 1996 and 2000 values may be attributed to the use of different data sets; sources based on disability rates for population ages 5 to 14, 1996 American Community Survey data and 2000 PUMS data, US Census; have either physical or sensory disability, or both.

**Children that received at least one public mental health service during the year (includes children served by public insurance, but not all served by OHP are represented); a difference in reporting after 2000 may attribute to the decline in number in 2005.

***Fiscal year 1995-1996

****Fiscal year 1998-1999

Table 21 displays, for the service area, population range estimates for children’s special population groups. The ranges are broad but offer the minimum and maximum probable number of children in need for each group. For example, in the service area in 2005, at least 2,859 children 0-5 years old most likely received WIC services, but that number could be as high as 8,576.

Table 21. Special Needs and/or Low-Income Children Ages 0-5 in Service Area, 2005 (est.)

Special Population	2005 Population Range Estimate (for # Served, # Cases, or # Special Needs Children)	
	Low	High
Children Receiving WIC Services (0-5)	2,859	8,576
Infants Receiving WIC Services (0-12 months)	801	2,402
Children (ages 0-5) in Families Receiving TANF	424	1,272
Medicaid Eligible Children (0-5)*	6,335	19,006
Medicaid Eligible Children Not Receiving Well Child Care (0-5)*	2,657	7,970
Children in SCF Custody / Children in Out-of-home Care (0-5)	173	520
Child Abuse Victims (0-5)	226	677
Children with Physical and Sensory Disabilities	153	459
Children with Physical Disabilities	53	158
Children with Sensory Disabilities	109	327
Children with Mental Disabilities	283	849
Children Receiving Mental Health Services in the Public Mental Health System (0-5)	113	340

The table below displays several risk factors for births in Multnomah County. The number and percentage of births to ethnic minority mothers increased from 1996 to 2005. Births to mothers ages 35 years and older have also increased, while the number of mothers not receiving adequate care increased. Tobacco usage by pregnant women has decreased during the same time period.

Table 22. Births with Maternal Risk Factors in Multnomah County

Risk Factor	1996	% all Births	2000	% all Births	2003	% all Births	2005	% all Births
Ethnic Minority heritage	2,353	25.8%	3,075	32.5%	3,232	34.6%	3,311	34.8%
Inadequate Prenatal Care*	493	5.4%	596	6.3%	504	5.4%	595	6.4%
Mother 35 yrs or older	1,250	13.7%	1,466	15.5%	1,560	16.7%	1,756	18.3%
4th or Higher Number of Births to Mother	958	10.5%	965	10.2%	953	10.2%	912	9.5%
Fewer than 12 yrs of Education	1,916	21.0%	1,940	20.5%	1,859	19.9%	1,938	20.2%
Single Mother	3,074	33.7%	3,037	32.1%	3,138	33.6%	3,301	34.4%
Tobacco Use	1,688	18.5%	1,287	13.6%	1,102	11.8%	1,113	11.6%

*Care began during the 3rd trimester or included fewer than 5 prenatal visits.

The number of mothers who were covered by public health insurance for the delivery of their baby increased from 1996 to 2005. In 2005, about 40 percent of births, or almost 3,800 births, were paid for by public insurance, such as Oregon Health Plan.

Table 23. Payment for Delivery of Baby

Payment for Delivery	1996	% all births	2000	% all births	2003	% all births	2005	% all births
Public Health Insurance	3,109	34.1%	2,961	31.3%	3,504	37.5%	3,831	39.9%
Self-pay	318	3.5%	569	6.0%	272	2.9%	204	2.1%
Other (includes private insurance and more than one method of payment)	5,608	61.5%	5,862	62.0%	5,506	59.0%	5,551	57.8%

The number of teen pregnancies has decreased continuously since at least 1996. Still, in 2004, almost 1,200 women under the age of 20 in Multnomah County became pregnant. (2005 data are not available.)

Table 25. Teen Pregnancies (not births) in Multnomah County

	1996	% all pregnancies	2000	% all pregnancies	2003	% all pregnancies	2004	% all pregnancies
Total Pregnancies (all ages)	13,344		14,067		13,270		12,819	
under 15 yr. of age	42	0.3%	32	0.2%	26	0.2%	29	0.2%
15-17 yrs of age	697	5.2%	573	4.1%	423	3.2%	371	2.9%
18-19 yrs of age	1,191	8.9%	1,128	8.0%	833	6.3%	789	6.2%
All Pregnancies to Females under 20 yrs of Age	1,930	14.5%	1,733	12.3%	1,282	9.7%	1,189	9.3%

The number of births to teenage mothers in Multnomah County has decreased since at least 1996. The share that births to teens represent of all births declined from 12.2 percent in 1996 to 7.3 percent in 2005.

Table 26. Births to Mothers Under 20 Years of Age in Multnomah County

	1996	% all births	2000	% all births	2003	% all births	2005	% all Births
Mother under 15 yrs of age	16	0.2%	15	0.2%	9	0.1%	10	0.1%
Mother 15-19 yrs of age	1,094	12.0%	939	9.9%	700	7.5%	690	7.2%
All Births to Mothers under 20 yrs of age	1,110	12.2%	954	10.1%	709	7.6%	700	7.3%

The percentage of teen births that are white is declining and it is declining at a faster rate than the percentage of the white population. Although approximately one-quarter of the population is of

ethnic minority heritage, over one-half of the teen births have been to ethnic minority mothers. The number of ethnic minority births is decreasing as is the total number of births, but the proportion of the total number of births that are to ethnic minority mothers is increasing. The number of births to Hispanic mothers is increasing, while the number births to mothers in the remaining racial/ethnic groups is decreasing.

Table 27. Births to Women Ages 10-19 in Multnomah County by Mother’s Race and Hispanic Origin

	1994-1996	1996-1998	1998-2000	2000-2002	2001-2003	2002-2004
White (non-Hispanic)	2,075	1,823	1,699	1,348	1,194	1,060
African American	603	506	469	393	336	325
American Indian	77	80	65	46	39	37
Other NonWhite	153	180	180	148	126	117
Hispanic (All Races)	498	551	623	702	689	666
Unknown	1	5	10	4	12	13
Ethnic Minority Total	1,331	1,317	1,337	1,289	1,190	1,145

In the service area, there was a decrease in the number of births to teenage mothers from 1996 to 2003. Their share of the number of births to mothers of all ages decreased as well, declining from 13 percent in 1996 to 7 percent in 2003.

The number of births to ethnic minority teen mothers in the service area has decreased from 1996 to 2003, but at a slower rate than the rate for all teen mothers. However, the share that births to ethnic minority teen mothers represent of births to all teen mothers increased during the same time period. In 2003, over 60 percent of all births to teen mothers in the service area were to ethnic minority mothers. (More recent data are not available.)

Table 28. Births to Teenage Mothers in the Service Area

Births to Women under 20 yrs. of age	1996	% all births	2000	% all births	2002	% all births	2003	% all births
Total	629	13.1%	471	10.2%	351	7.8%	309	6.9%
Race/Ethnicity of Teens Giving Birth	1996	% all births to teens	2000	% all births to teens	2002	% all births to teens	2003	% all births to teens
White, non-Hispanic	321	51.0%	205	43.6%	165	47.1%	126	41.4%
Ethnic Minority	309	49.0%	266	56.4%	186	52.9%	183	60.2%

The percentage of teen mothers receiving adequate prenatal care remained fairly stable during 1996-2003 at around 89 percent. In the time period 2002-2004, however, teen mothers receiving adequate care climbed to 94 percent. A higher percentage of mothers giving birth were receiving public medical coverage in 2001-2003 than in previous years. (More recent data are not available.)

Table 29. Prenatal Care in Births to Women Age 10-19 Multnomah County

	1994-1996	1996-1998	1998-2000	2000-2002	2001-2003	2002-2004
Number Receiving Adequate Prenatal Care	3,059	2,858	2,708	2,346	2,137	2,107
% Receiving Adequate Prenatal Care	89.8%	90.9%	88.9%	88.8%	89.2%	94.4%
Number Receiving Public Insurance for Prenatal Care	926	1872	1,724	1,712	1,653	N/A

In Multnomah County, 11th or 12th grade was the highest level of education attained by most teenage mothers giving birth from 1996 to 2003. (More recent data are not available.)

Table 30. Educational Attainment of 10-19 Year Olds Giving Birth in Multnomah County

	1994-1996	1996-1998	1998-2000	2000-2002	2001-2003	2002-2004
8th Grade or less	498	463	427	363	328	286
9th- 10th Grade	1,076	902	845	760	700	644
11th to 12th Grade	1,652	1,625	1,570	1,334	1218	1129
Some College	125	111	137	127	105	114
College Degree	0	0	0	1	0	0

Table 31 reports an estimated demand for and availability of child care in Multnomah County and in Portland¹.

¹ Child care data are available for Multnomah County and for Portland. The data are not available for the service area.

During 2004 in Multnomah County and in Portland, the number of children ages 0-5 residing in households with working parents was more than double the number of available child care slots. In Multnomah County, over 16,000 children are estimated to have had unmet child care needs in 2004; about 28,600 children are estimated to have been in need of child care and there were only 12,000 child care slots available. In Portland, as many as 12,600 children ages 0-5 may have had unmet need for child care.

In Multnomah County estimated 58 percent of children under 6 years of age with a potential need for child care are not being served in child care centers or in family child care settings. In Portland, the estimated unmet need for child care is 56 percent. Although some of these children are likely to be cared for by relatives or family friends and are unreported, there still is a sizable demand for child care in the County, in Portland and in the service area.

Table 31. Child Care (CC) Availability, 2004*

Childcare Slots and Settings	Multnomah County	Portland
Need for Slots*	28,642	22,590
Total CC Slots Available	12,103	9,915
Estimated Unmet Need	16,539	12,675
Types of Slots		
CC Center Slots	8,665	7,248
Family CC Slots***	3,438	2,667
Types of Child Care		
CC Centers	137	120
Family CC	668	523

*Source: Oregon/Metro Child Care Resource and Referral Network

**The number of children under 6 years of age estimated to be residing in a living situation where parents are in the labor force; does not take into account unemployment.

***The maximum number of slots in family care providers for children 0-5 that might be available; not necessarily all slots are available due to configuration decisions of individual providers.

In 2005, the estimated need for child care slots for children under 6 years of age is 30,300 in Multnomah County; the estimated need is 21,200 in Portland. The number of children potentially needing child care increased in Multnomah County during the past year. (2005 data on the number of child care facilities and slots are not available.)

**FINDINGS FROM PROGRAM INFORMATION REPORTS (Revised)
Portland Public Schools (PPS) Head Start, 2000-2005**

Head Start programs are required to compile and submit an annual Program Information Report (PIR) to the federal Head Start Bureau. The data required to complete the PIR pertain to currently enrolled children and families in a specific Head Start program. The following are the most important changes in the PIR data for PPS Head Start between the school years 2000-01 and 2005-06. The figures in parentheses represent the corresponding total number of and/or percentage increase for the period, unless otherwise specified.

* Funded Enrollment increased from 560 in 2000-2001 to 642 in 2005-2006, an increase of 13 percent.

* In 2005-2006, enrollment was comprised of nearly 80 percent ethnic minority children. The percentage has increased steadily since 2000-2001. Hispanics continue to surpass whites as the largest racial/ethnic group, and represented 41 percent of all enrolled children in 2005-2006.

* About 50 percent of children enrolled in 2005-06 reside in non-English-speaking homes; the share of children from homes where languages other than English are spoken has remained about the same during the past several years.

* Seventy-seven percent of all Head Start families needing full-day, full-year childcare received this service through Head Start. This percentage increased from 2004-05.

* Only 52 percent of enrolled children were covered by health insurance in 2004-05, which was a five-year low. In 2005-2006, the number of children who were insured increased to 76 percent, mainly due to an increase of enrollment in the CHIP program.

* Ninety-four percent of enrolled children completed medical screening in 2005-2006, and of those, only 3 percent (22 children) were diagnosed as needing medical treatment; all in need of treatment were receiving treatment.

* Asthma was the most commonly received medical treatment for enrolled children (32 percent of those receiving treatment), followed by vision care (24 percent of those receiving treatment).

* Children whose immunizations were up-to-date increased in 2005-06 to 87 percent, up from 74 percent the year before.

* Single-parent families represented 43 percent of all PPS Head Start families in 2005-06, which is the lowest percentage since at least 2001-02.

Second Addendum to the 2005 Community Assessment Report
Portland Public Schools Head Start

* In 2005-06, 23 percent of the heads of household in the enrolled families had not graduated from high school. That percentage was the lowest since at least 2001-02. Conversely, the percentage of heads of households with a high school diploma/GED increased from 31 percent to 60 percent during the same period.

* In 2005-06 there was a decrease in the number of parents enrolled in job training or school – only 5.5 percent, or 22 parents, were enrolled, the fewest in recent years.

*The number of employed parents increased in 2005-06. At least 70 percent of the households have at least one parent working, which is an increase from 34 percent in 2004-05.

*The number of families receiving benefits under TANF (31 percent), SSI (6 percent), and WIC (42 percent) have steadily increased since 2002.

* Parenting education, ESL, Adult education, and emergency/crisis intervention services are the most utilized family services by parents of enrolled children. About one-quarter of families have used one or more of these services in recent years.

* Since at least 2000-01, 15-17 percent of enrolled children were diagnosed with a disability; most have a developmental or physical disability.

APPENDIX 1

INITIAL FINDINGS FROM DEMOGRAPHIC AND SOCIOECONOMIC DATA FOR THE SERVICE AREA AND MULTNOMAH COUNTY (Revised)

Findings are for the service area unless otherwise noted.

Population

- The population in the service area increased at a slightly lower rate than in Multnomah County from 2000 to 2005 (0.9 percent vs. 1.4 percent).
- The rate at which the population ages 0-5 has been decreasing was slower during 2000-2005 than in previous years. During 1996-2000, the average annual decrease of children under 6 years of age was about 390; during 2000-2005, the average dropped to 145 fewer children per year.
- The population ages 0-5 has been increasing in the County with growth rates higher during 2000-2005 than 1996-2000.

Minorities

- The proportion that ethnic minorities represent of the total population is increasing in both the service area and in Multnomah County.
- The proportion that ethnic minorities represent of the total population is 29 percent and is higher in the service area than in the County.
- Blacks no longer represent the largest minority group in the service area. The growth that the Hispanic population experienced from 2000 to 2005 increased the Hispanic share of the total population up to the level that Blacks represent (9.0 percent of the total population).
- Hispanics are increasing at the fastest rate amongst all minority groups, followed by Asians.
- During 2000-2005 there was an increase in the number of Blacks residing in the service area, a reversal of a downward trend during 1996-2000.

Births

- The number of births in 2004 was about 4,375 and has decreased since 1996 by an average of 40 births per year.
- From 1996-2004, the number of births in Multnomah County increased by an average of 18 births per year.
- The fertility rate in Multnomah County has declined since at least 1996, but the pace at which it is declining is slowing down.

- There was an increase in the number of births to women of older ages from 1996 to 2004, but a decrease in fertility was experienced by those in the under-30 age groups. The greatest decrease during the time period occurred in the 20-24 age group.

Households

- The increase of households occurred at a slightly higher rate than population in the service area and in Multnomah County from 2000-2005. As a result, the average number of persons per household (PPH) declined in both areas.
- Family households with children represent about 24 percent of all households.
- After decreasing during 1996-2000, the number of single-parent households increased during 2000-2005.
- About 40 percent of children's households are single-parent households.

English Ability/Language

- The number and percentage of persons who do not speak English very well have increased since 1996.
- Forty percent of those who don't speak English very well, speak Spanish.
- The number of persons who speak Spanish but little or no English are increasing at a faster rate than those speaking another language.

Mobility

- Since at least 1996, more than one-half of the population moved in the previous 5 years.
- About 20 percent of the population moved within the past year.
- Over half of the movers moved from within Multnomah County, but that percentage has been decreasing since 1996. The percentage moving from out-of-state has increased during the same time period.

Education

- Approximately 57 percent of, or 127,200, persons ages 25 and older do not hold a college degree.
- Over 31,700 persons, ages 25 and over, have not earned a high school diploma (including GED).

- The number of persons earning a college degree has been increasing while the number of persons with lower levels of education has been decreasing.

Employment

- It is estimated that in 2005 there were over 15,600 unemployed persons residing in the service area and that the unemployment rate was about 8.5 percent.
- The proportion of persons that are participating in the labor force has increased slightly; labor force participation is about 71 percent of persons ages 16 years and older.
- A slightly higher proportion of the population in the service area is participating in the labor force than in Multnomah County.
- Although the 2005 unemployment rate in the service area is higher than it was in 2000, it is estimated that it is lower than it was in 2003.
- The unemployment rate for women is lower than the rate for the general labor force.
- The unemployment rate for women with young children is lower than the rate for all women.
- Since at least 2000, the unemployment rate for women in the service area has been higher than the rate for the County. However, the unemployment rate for women with young children has been lower in the service area than in the County.
- About 66 percent of women with children under 6 years of age, or 6,585 women with children under 6, are participating in the labor force.

Income and Poverty

- It is estimated that about 32,150 households, or 24 percent, of all households had an annual income of less than \$20,000 in 2005.
- About 40 percent of all persons living below the poverty level in Multnomah County resided in the service area in 2005.
- The 2005 poverty rate is estimated to be 16.4 percent.
- The poverty rate in the service area was higher than the rate for the County in 1996 and 2000, but is estimated to be lower in 2005.
- The 2005 poverty rate for children under age 6 years of age was about 23.1 percent, which is 7 percentage points higher than the poverty rate for the general population.
- In 2005, 69 percent of children under age 6 whose family had income below the poverty level resided in single-parent families.

Special Needs Children

- In 2005, it is estimated that about 1,550 children ages 3-4 were eligible to receive Head Start services in the service area and about one-third did not receive Head Start services. The percent unserved children in 2005 is estimated to be higher than in 2000 in both the service area and County.
- In Multnomah County in 2005, over 12,000 children in families that were covered by Medicaid did not receive well-child health care.
- It is estimated that over 1,300 children ages 0-5 residing in Multnomah County in 2005 had a mental disability.
- After a few years without significant change, in 2004 there was an increase in the number of children residing in out-of-home care and in the number of child abuse victims in Multnomah County. An increase was also seen in 2005.
- Although the number of births to teen mothers has been decreasing in Multnomah County, there were approximately 700 births to women under the age of 20 in 2004.
- The number of births to teens has declined steadily since 1996, though the share of births to ethnic minority teens has risen by over 10 percentage points from 1996 to 2004.
- About 58 percent of children ages 0-5 with a potential need for child care in 2004 were not served in family child care settings or childcare centers in Portland and in Multnomah County. Although some children were most likely cared for by a relative or family friend, there was still a large unmet need for childcare.
- The estimated need for child care slots for children under 6 years of age in Multnomah County increased from 29,140 in 2003 to 30,300 in 2005, which is an increase of 1,160 needed slots.

SOURCES OF DATA ADDED TO THIS ADDENDUM

Tables and figures are not included in this list if no new data were added to them, or if estimates were not prepared with new data.

Table 1: Population & Figure 2: Service Area Population, by Age

Source: US Census Bureau, 2005 American Community Survey, Table B01001

Table 2: Population by Race and Hispanic Origin & Figure 3: Percent Minority Population & Table 3: Racial/Ethnic Groups as Percent of Total Population

Source: US Census Bureau, 2005 American Community Survey, Table C03002, Hispanic or Latino Origin by Race

Figure 4. Births Per Year, Multnomah County and PPS Head Start Service Area, 1996-2004

Sources: Oregon Department of Human Services, Center for Health Statistics

Figure 5a. White/Minority Births & Figure 5b. Race/Hispanic Origin, Minority Births (%), 1996-2004

Source: Oregon Department of Human Services, Center for Health Statistics

Figure 6. Multnomah County Fertility: Births per Woman Age 10-49, 1996-2004

Source: Oregon Department of Human Services, Center for Health Statistics; Portland State University Population Research Center, Annual Population Estimates

Figure 7a. Age-specific Fertility Rates, Multnomah County, 1996-2000 & Figure 7b. Age-specific Fertility Rates, Multnomah County, 2000-2004

Sources: US Census Bureau, American Community Survey; Oregon Department of Human Services, Center for Health Statistics; Population Research Center, Annual Population Estimates

Table 4: Households

Sources: US Census Bureau, 2005 American Community Survey, Table B11001

Table 5: Children's Households by Family Type, Service Area & Table 6: Children's Households by Family Type, Multnomah County

Source: US Census Bureau, 2005 American Community Survey, Table C11005, Households by Presence of People under 18 Years by Household Type

Table 7: Ability to Speak English and Language Spoken at Home

Source: US Census Bureau, 2005 American Community Survey, Table C16001, Language Spoken at Home by Ability to Speak English for the Population 5 Years and Over

Table 8: Mobility of Persons 5 Years Old and Over

Source: US Census Bureau, 2005 American Community Survey, Table B07001, Residence 1 Year Ago by Age in the US

Figure 8: Education Attainment in the Service Area & Figure 9: Educational Attainment, 2005
Source: US Census Bureau, 2005 American Community Survey, Table B15002, Sex by Educational Attainment for the Population 25 Years and Over

Table 9: Employment Status for Persons 16 Years and Over (Civilian)
Source: US Census Bureau, 2005 American Community Survey, Table B23001, Sex by Age by Employment Status for the Population 16 Years and Over

Table 10: Employment Status for Women with Children Under 6 Years of Age
Source: US Census Bureau, 2005 American Community Survey, Table B23003, Presence of Own Children under 18 Years by Age of Own Children under 18 Years by Employment Status for Females 20-64

Table 11: Persons Employed by Occupation & Figure 7: Percentage of Employed Persons by Occupation in Service Area
Source: US Census Bureau, 2005 American Community Survey, Table B24010, Sex by Occupation for the Civilian Employed Population 16 Years and Over

Figure 10: Percentage of Employed Persons by Occupation in Service Area
Source: US Census Bureau, 2005 American Community Survey, Table B24010, Sex by Occupation for the Civilian Employed Population 16 Years and Over

Table 12: Household Income Levels in 2005 Dollars & Figure 11: Household Income Levels, 2005
Source: US Census Bureau, 2005 American Community Survey, Table B19001, Household Income in the Past 12 Months (in 2005 inflation-adjusted dollars; Oregon Employment Department, Consumer Price Index Calculator

Table 13: Households That Received Public Assistance Income
Source: US Census Bureau, 2005 American Community Survey, Table B19057, Public Assistance Income in the Past 12 Months for Households

Table 15: Households and Persons with Income Below Poverty Level
Source: US Census Bureau, 2005 American Community Survey, Table C17017 Households with Income in the past 12 months below Poverty Level, and Table B07012 Population 1 Year and Over in the US for Whom Poverty Status is Determined: Below 100 percent of the poverty level

Figure 12: Poverty Rate for Persons by Census Tract, 2000
Sources: US Census Bureau, Decennial Census 2000; RLIS, Metro, 2005

Table 16: Children in Households with Income Below the Poverty Level
Source: US Census Bureau, 2005 American Community Survey, Table B17006, Poverty Status in the Past 12 Months of Related Children under 18 Years by Family Type by Age of Related Children under 18 Years

Table 17: Children in Households with Income Below the Poverty Level by Family Type

Source: US Census Bureau, 2005 American Community Survey, Table B17006, Poverty Status in the Past 12 Months of Related Children under 18 Years by Family Type by Age of Related Children under 18

Table 18: Head Start Eligible Children Ages 3-4

Source: Oregon Department of Education, Childhood Unit

Tables 19: Special Needs and/or Low-Income Children in Multnomah County and & Special Needs and/or Low-Income Children Ages 0-5 in Service Area, 2005

Sources: WIC data are from Multnomah County Office of Family Health; Children in Foster Care data are from Oregon Department of Human Services: Children, Adults and Families, Program Performance & Reporting; Child abuse victim data are from Department of Human Services, Child Protective Services

Table 20: Children with Disabilities in Multnomah County

Estimated by PRC based on US Census Bureau 2000 PUMS data and PRC Annual Population Estimates

Table 22: Births with Maternal Risk Factors in Multnomah County

Source: Oregon Department of Human Services, Center for Health Statistics, web site <http://egov.oregon.gov/DHS/ph/chs/data>

Table 23: Payment for Delivery of Baby

Source: Oregon Department of Human Services, Center for Health Statistics, web site <http://egov.oregon.gov/DHS/ph/chs/data>

Table 25: Teen Pregnancies (not births) in Multnomah County

Source: Oregon Department of Human Services, Center for Health Statistics, web site <http://egov.oregon.gov/DHS/ph/chs/data>

Table 26: Births to Mothers under 20 Years of Age in Multnomah County

Source: Oregon Department of Human Services, Center for Health Statistics, web site <http://egov.oregon.gov/DHS/ph/chs/data>

Table 27: Births to Women Ages 10-19 in Multnomah County by Mother's Race and Hispanic Origin

Source: Oregon Department of Human Services, Center for Health Statistics, web site <http://egov.oregon.gov/DHS/ph/chs/data>

Table 28: Births to Teenage Mothers in the Service Area

Source: Oregon Department of Human Services, Center for Health Statistics, web site <http://egov.oregon.gov/DHS/ph/chs/data>

Table 29. Prenatal Care in Births to Women Age 10-19 Multnomah County

Source: Oregon Department of Human Services, Center for Health Statistics, web site
<http://egov.oregon.gov/DHS/ph/chs/data>

Table 30. Educational Attainment of 10-19 Year Olds Giving Birth in Multnomah County

Source: Oregon Department of Human Services, Center for Health Statistics, web site
<http://egov.oregon.gov/DHS/ph/chs/data>

Table 31: Child Care (CC) Availability

Source: Metro Childcare Resource and Referral and US Census Bureau, 2005 American Community Survey, Table B23008, Age of Own Children Under 18 Years in Families and Subfamilies by Living Arrangements by Employment Status of Parents