

# The Connection

Summer 2003

## Calling all Classmates:

Based on the feedback that we have received from many of you and the resulting discussions we have decided to take on the challenge that Chi Baker shared with the 2002 cohort which is to do whatever we can to facilitate healthy and inclusive relationships among class members. This will take effort and patience on your part. You will need to become involved to facilitate this goal. Only you can make the effort individually to meet and/or reconnect with your fellow classmates. As we diverge into our specialties in the next year, we will have to work at keeping connected as a cohort. We welcome your suggestions and ideas. Contact board members at anytime. See back page with names and email addresses.

Please email Steve O'Sullivan or Jan Premo with any suggestions of new names for the newsletter. We are trying this title/name out for size in this issue, the previous name was the Facilitator, but open for any suggestions. Email suggestions to either

osullivansummit@yahoo.com

premoj@pdx.edu

## Internship

### Opportunity:

The Counseling Clinic will be accepting applications for Winter 2004 Internships early this Fall.

Application process will be posted on the 5th floor bulletin board.

## Spirituality Issues in Counseling

A Reaction to the April 2003 Seminar

By Brandan Flynn, 2002

The *Spiritual/Religious Issues* seminar provided a valuable opportunity for the participants to examine their individual feelings associated with this topic. Dr. Judith Maranti of Our Lady of Holy Cross College, presented a well structured seminar to address these issues in the counseling field. She suggested that religion and spirituality may differ between people resulting in difficulties in

the counseling relationship. Maranti gave participants the chance to share their personal feelings, thoughts, values, and definitions of spirituality and religion. In discussing this, participants addressed their unique position and identified how this may affect their intervention while in the helping relationship. She highlighted standard definitions of religion and spirituality along with

vignettes for small groups discussion. The seminar allowed each to engage in present and future self-exploration of religion and spirituality. I came away from this seminar with a better understanding of my personal beliefs and values in this evolving topic. The information gained in this seminar will allow me to continue to address and learn from my feelings of spiritual and religions.

## 2003 ACA National Conference

By, Mark Stauffer, President, Chi Sigma Iota, Pi Sigma Upsilon Chapter.

This last year I had the opportunity of attending the ACA conference. I was presented with a Chi Sigma Iota fellowship. Many of the professors and students at Portland State University attended the convention as well. Some of them presented on various topics at one of the pre-conference learning institutes or at the educational sessions during the conference. At this last conference many of the writers for the textbooks we use in class were there. I shared dinners with past ACA presidents and got a chance to mingle with counseling celebrities like William Glasser

(We talked about his neighbor's lawn in the elevator. He later signed a copy of his new book: *Psychiatry can be hazardous to your health.*)

Whether you are into spirituality, LGBT families, AOD treatment or coping techniques, there is a long list of possible topics presented at the convention from which to choose. Go online (in a month or two) to [www.counseling.org](http://www.counseling.org) to find out what is being offered this upcoming year.

If you are interested in pursuing a doctorate degree in Counselor Education the convention is a must. Meeting faculty and staff from other uni-

versities prior to applying will be helpful. Even if you are not interested in further degree studies, the convention is excellent for all attendees. In my experience, outside of what the learning institutes provided, a sense of professional belonging became apparent at the convention. I found connection with individuals I had just met, but felt a sense of camaraderie because of our shared profession. It helped shift my mind from envisioning myself as a professional working in the field to being a professional working in the field within a network of other workers.

If you would like more

Continued pg 11

# Steve O'Sullivan says....F.Y.I.....

The Continuing Education program, located within Portland State University's School of Education and School of Extended Studies, provides ongoing professional development and lifelong learning for students, licensed health professionals, such as professional counselors and social workers, and the general public. The Continuing Education program offers a series of courses for Graduate Certificates in Addictions Counseling and Couples, Marriage, and Family Counseling as well. Workshops are also offered and meet ongoing licensure requirements in both Oregon and Washington states.

Graduate counseling students are encouraged to pursue these courses to better prepare for their client population in which some of the most significant

and reoccurring challenges are related to addiction and relationships issues. There is a growing need by agencies and the professional community for knowledgeable and certified counselors in substance abuse. A graduate certificate in addictions counseling can increase employment opportunities and is highly desirable. There are five core courses and two elective courses that are part of the series of classes required for this certificate.

Marion Sharp, the coordinator of Continuing Education is the contact for additional details regarding these certificates and workshops. The Continuing Education Department is a NBCC accredited and certified provider, and workshops are automatically approved for NBCC. Marion recommends stu-

dents check the Continuing Education Catalog or online at [www.ceed.pdx.edu](http://www.ceed.pdx.edu) if they are unable to locate classes that they are interested in. The PSU Bulletin does not always publish continuing education courses.



Steven O...

## NOTICE

Anyone with intern site possibilities, for the Winter and Spring of 2004 please contact Steve O'Sullivan and we will pass the word.

## 2003 Student Group Design Projects For Future Reference:

### Children/Adolescents

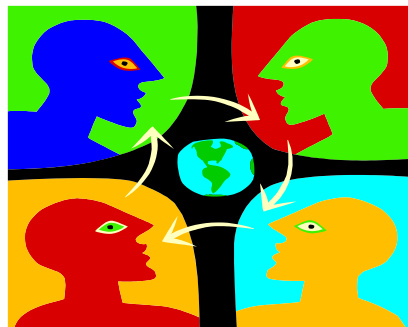
M. Proctor - girls with older siblings with cancer  
M. Garcia - play therapy  
D. Mathews - coping with war and deployment  
S. Hubbard - foster care children  
C. Tice - moving to middle school  
R. Pederson - skill development for middle schoolers

### Adolescents/Teenagers

A. Henry - student athletes on academic probation  
S. Fallico - music therapy and at-risk teens  
T.K. Polychronis - self-esteem enhancement  
K. Cavanaugh - grief and loss  
D. Johnson - girl power  
S. Rivera - at-risk students with learning disabilities  
L. Centurion - girls with behavioral needs  
N. Sibert-Faaborg - generalized anxiety disorders  
D. Kumprey - career interest and exploration  
E. Morrison - personal strength and empowerment in girls  
M. Brooke - Grrrls!  
Y. Howard - bibliotherapy for girls  
N. Roth - psycho educational  
S Chi Baker - rites of passage  
M. Arrigotti - self-discovery for girls  
M. Burkhart - adolescent daughters and single mothers

### ATOD

J. Premo - newly employed methadone clients  
S. O'Sullivan - court-mandated offenders with alcohol disorders



Sharing your ideas with your peers can provide you with the benefit of new and creative ideas and make you the shining star at your place of employment..

### Adults with Disabilities

T. Bredengerd - emphasizing the ability in disability  
K. Weiner - overcoming societal, sexual and recreational barriers  
C. DeMott Sims - starting a new career  
Al. Manitsas - living with epilepsy  
B. Flynn - injured workers  
M. Hardin - transition to work

### Adults Issues

S. Flanagan Fuery - CBT for anxiety symptoms  
Mayumi O. - cultural adjustment for international students  
L. Coon - career  
R. Sarna - children of holocaust survivors  
J. Keyes - panic attacks

A. Memory - career transition and job search

J. Shelpman-Woolery - conflict management for managers  
R. Messchaert - medicine wheel/psycho educational  
J. Ripley - parent support and skill training  
M. Campbell - ACOA with substance abusing partners

### Mens Issues

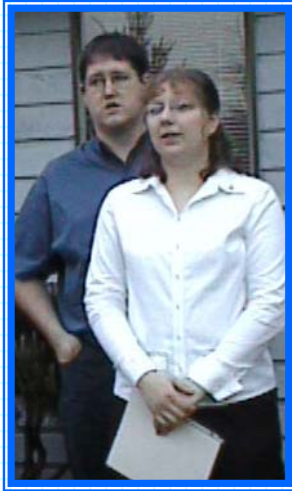
T. Meier - grief and loss for gay men

### Womens Issues

T. Braden - celebration of becoming  
K. Schultz - eating and body awareness for women students  
R. Reser - moving past abuse  
B. Dau - survivors of domestic violence  
N. Luomanen - abused women learn to rebuild  
T. Yevka - women victims of childhood sexual abuse  
Elderly  
K. Subotnick - creative life enhancement  
M. Mayer - a life review

*We would love to have any of the alums projects should you wish to share them with us. The 2002-2003 class used the book with the published group projects, but many of you may still wish to share your project with us. Email Jan Premo at [premoj@pdx.edu](mailto:premoj@pdx.edu) with your group design and we will put it in the next newsletter.*

# Induction Ceremony for Chi Sigma Iota



# Alumnae News: What's up and when...

## **Congratulations 2003 graduates!!**

*It's all down hill from here?*

The past year has been a challenge with the ongoing economic deficits that have taken their toll most heavily on the education sector. It is important for all of us to become politically active in any way we can to put pressure on the government to be fully accountable for their actions.

One way you can help is to write your local and state senators regarding Senate Bill 806.

The purpose of Senate Bill 806 is to add Licensed Professional Counselors (LPC's) and Marriage and Family Therapists (MFT's) to the list of

mental health professionals used by group health insurance plans in the state of Oregon. Currently, LPC's and MFT's have to separately apply to each health insurance carrier to seek eligibility for receiving benefits.

Passing of this legislation will provide freedom of choice for consumers to find specialists who are trained specifically in the area in which they need assistance.

One of the myths of the resistance is that the cost of amending the "list" is prohibitive. The cost of adding LPC's and MFT's to the list of eligible providers would be negligible to health insurers (i.e., less than 1% over a five year span).

Psychologists and MSW's are the only significant opponents to this

bill. It is important to write your state representative in your district:

[www.leg.state.or/writelegsltr/write set.htm](http://www.leg.state.or/writelegsltr/write set.htm).

**Todd Meiers,**

wtmeier@agora.rdrop.com

**There will be a renewal postcard sent along with two newsletters keeping you updated on current events in the program as well as topics of professional interest.**



## **We're Proud of Our Counseling Program Graduates 2003 !!**

### **Congratulations**

Cheryl Adams, MS  
Cynthia Aerni, MS  
Tori Alderman, MS  
Tenicea Amos-Combs, MS  
Shawna Anderson, MS  
Julie Archibald, MS  
Bryan Austin, MS  
Sarah Berch, MS  
Mark Bond, MS  
Juliet Booth, MA,  
Eliza Carroll, MS  
Kyle Cawood, MS  
Diane, Delgado, MS  
Edward Eaton, MS

Betty Foufos, MS  
Douglas, Franklin, MS  
Roger Fritz, MS  
Valerie Garst, MS  
Ellsworth, Gibson, MS  
Nicole Gilbertson, MS  
Christyna Hengstler, MS  
Karen (KL) Howling, MS  
Brenda Jackson, MS  
Anne James, MS  
Barbara Klym, MS  
David Langlois, MS  
Christopher Lewis, MS  
David Lindsey, MS  
Carissa Marquis, MS  
Kristy McNulty, MS  
Dora Montgomery, MS  
Marny Moore, MS  
Jeffrey Morris, MS  
Heather Murphy, MS

Marcia Nelson, MA  
Michelle Nelson, MS  
Chifumi Ogawa, MA  
Keri Phipps, MS  
Guinevere Reeves, MS  
Mary Reid Holmes, MS  
Kylea Schmidt, MS  
Erica Sedore-Mallin, MS  
Clarissa Jane Shepherd, MS  
Shelia Towne, MS  
Linda Volz, MS  
Alicia Wendler, MS  
Cynthia Williams, MS  
James Worsley, MS

*The graduates listed in this column are those who applied for graduation for 2003. Their status may have changed since the date of this list.)*

# “End of the Year Party” Graduation 2003



## A Message from David Capuzzi:

I hope this Newsletter message finds you enjoying the summer and not too busy with coursework. I thought you might like receiving some end of the year information about what is going on in the program.



### **SCHOLARSHIP RECIPIENTS**

I am pleased to let all of you know that five of the Counselor Education students received scholarships for the next academic year. Three of these scholarships, the Art Terry Scholarships, are a direct result of alumni, student and faculty contributions to the PSU Counselor Education Foundation accounts. (Your contributions add up and provide concrete and direct assistance to some of our students). I want to encourage more of you to apply for scholarships when the application cycle begins, again, early in 2004.

~The ART Terry Scholarships are awarded each year; the numbers and amounts depend upon contributions to our accounts in the PSU Foundation, as noted above, during each new academic year. Art Terry was a well loved Counselor Educator here at PSU until his untimely death in 1994. He was a very good friend of mine and loads of fun. Art was very dedicated to his teaching, advising and mentorship roles here at PSU. He cared deeply about the welfare of students and spent countless hours on their behalf. He served as coordinator of the Counselor Education program for at least three of his 11 or so years on the faculty. He would be so pleased to know that this scholarship fund was created after his death for the benefit of deserving students in our program. This year's recipients are: Susan Rivera, Dawn Matthews, and Katje Wagner. Each will receive \$1000 in

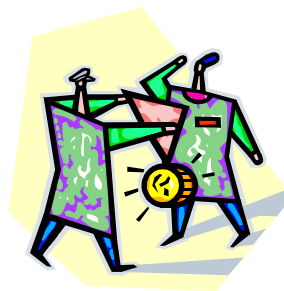
time for registration for fall classes. Ryan Pederson is the recipient of a \$2000 scholarship awarded by the Graduate School of Education (GSE). This scholarship fund can be used to assist any student in any department in the GSE and it is an honor for Ryan (and for the Counselor Education program) to have received it this year.

Jan Premo is the recipient of the Patrick J. Schmaljohn scholarship established five years ago, at the time of Patrick's death, by the Dean of the GSE, Dr. Phyllis Edmundson, and her husband. It is given to a student in the Counselor Education program who has "committed" to pursuing and completing the addictions counseling certificate program in addition to the Masters degree as well as to contributing to the addictions counseling field upon graduation. Patrick committed suicide at the age of 31 because of his addiction. The Dean and her husband are very open about this to encourage counselors to prepare themselves to work with those struggling with addictive behaviors. The award is for \$1500.

***Congratulations to the five of you!***

### **THE LARRY AND CAROL BURDEN AWARD**

This award program was established by Carol and Larry at the time Carol Burden, a member of the Counselor Education faculty, retired in 1998. It is a perpetual award, given every year to an outstanding student nominated by members of the Counselor Education faculty. This year's recipient is none other than Debbie Holmes. I think you know that Debbie has served as a graduate assistant for Counselor Education program support for the past two years. She has assisted the faculty with the development of class schedules, interviewing



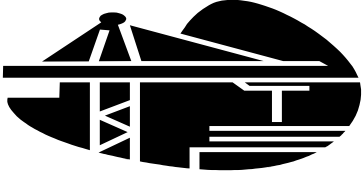
new students, new student orientation, CACREP accreditation, updating of the new student orientation handbook and a myriad of other responsibilities too numerous to list. I have worked closely with Debbie during the last two years in conjunction with my role as program coordinator for Counselor Education. I find her to be one of the most competent and

professional women I have ever met and she is a role model for others in our field. **Congratulations Debbie!**

### **KUDOS AND THANKS!**

- \* To Betty Foufos for an outstanding job in her role as graduate assistant for the clinic on the fifth floor.
- \* To Mark Stauffer for his work with me as research assistant as well as the outstanding leadership he has brought to Chi Sigma Iota as chapter president.
- \* To Sherri Lott for her service to the Rehabilitation Specialization in her role as graduate assistant with Hanoch Livneh.
- \* To Russ Miars for all he does in his capacity as clinical coordinator for practicum and internship placements.
- \* To Susan Halverson for her contributions as Chi Sigma Iota advisor to the PSU chapter.
- \* To Liz Wosley-George for the kindness and nurturance she bestows on us all.
- \* To Glen Maynard for the competent and positive way he serves the program in his capacity as Director of the fifth floor clinic.
- \* To Hanoch Livneh for his mentorship and role modeling as a scholar and gentleman.
- \* To Rolla Lewis for his leadership in developing the School Counseling specialization.
- To Lisa Wilson for the contributions she has made to both the School and Rehabilitation specializations.

Capuzzi cont:



### **CLINIC IMPROVEMENTS**

We are in the process of furnishing two more clinic rooms on the fifth floor. This should be completed sometime this summer and will mean that we will now have six operative counseling rooms so that every student, enrolled in a given section of practicum, can see clients in a comfortable, professional environment and be filmed and supervised appropriately. This, again, is a direct result of contributions to the Counselor Education Foundation accounts.

Earlier this year, because of an internal grant given by the university, we installed state of the art camera and video equipment in the clinic. This coming year our efforts will be focused on the David Douglas practicum clinic used by students in the school specialization to see their clients as well as building a control room for the fifth floor on campus clinic. (We are searching for a grant).

### **RECORD APPLICATION NUMBERS TO OUR PROGRAM**

This year 152 individuals applied for the 56 openings for the fall cohort.

This is the highest number of applicants in the 40 year history of the

program. I think this speaks well to the quality of our program.

### **SOME IDEAS FOR NEXT YEAR**

To escalate our fund raising efforts on behalf of the program and to encourage Chi Sigma Iota to help us contact community members and businesses for contributions.

To attempt to locate money for travel for students and faculty to professional conferences.

To encourage student attendance at the ACA Convention in Kansas City in March of 2004.

To promote our Distinguished Speakers fall (Men's Counseling Issues with Dr. Courtland Lee) and spring (Play Therapy with Dr. Terry Christiansen) series.

Students can enroll under the Coun 507 number since three 507's are required

for graduation.

To host more social events for students and faculty to attend so that we can build "community" and support for each other.

To support faculty in their publication efforts and professional development.

To encourage more of our students to go on for doctoral work.

To be good role models and mentors for each other and do a competent and professional job as we carry out our responsibilities as members of a student/faculty academic and professional community.

### **A FINAL NOTATION**

I have been challenged, exhausted at times, and always encouraged in my role as program coordinator. It has, because of you, been worth the effort and I look forward to working with you next year!



# Check it out ...#@!..\*

## Internet, web resources, etc. for your purview.....

### *New websites to check out:*

National Library of Medicine.

<http://www.ncbi.nlm.nih.gov/entrez/query.fcgi>

SAMHSA's Mental Health Services Information Center.

<http://www.mentalhealth.org/>

Mental Health and Behavior Topics – Medlineplus/NLM

<http://www.nlm.nih.gov/medlineplus/mentalhealthandbehavior.html>

Facts for Families, sponsored by the American Academy for Child and Adolescent Psychiatry.

<http://www.aacap.org/publications/factsfam/index.htm>

The Psychiatric Times –newsletter like..CME Inc. sponsored

<http://www.psychiatrictimes.com/p030473.html>

The Geriatric Times: CME sponsored  
<http://www.geriatrictimes.com/>

Clinical psychopharmacology. The Virtual Hospital:

<http://www.vh.org/adult/provider/psychiatry/CPS/contents.html>

Pathophysiology of Drug Addiction

<http://www.nida.nih.gov/Diagnosis-Treatment/Diagnosis4.html>

*(Note the listing of the websites does not imply credibility or support, it is only for you to determine for yourself as to it's worth and appropriate use.)*

|| = = = = = ||  
 || *"This section is for the benefit of*  
 || *sharing information between you*  
 || *and your peers.* When you come  
 || across a web site that might be a  
 || resource that might benefit others  
 || in your profession or course of  
 || study, please email me and I will  
 || list it in this section.  
 ||  
 || **premoj@pdx.edu**  
 ||  
 || **The value of this section is**  
 || **totally dependent upon your**  
 || **contributions and willingness**  
 || **to share.**  
 || = = = = = ||

# Bulletin Board

Anyone interested in developing a research proposal?

I am interested in doing the above or something along those lines which would be beneficial to the program and/or my professional development. I would like to hook up with anyone else with similar interests and see what we could do to

*wow the world... .*

If you are interested email me and let's get started.

Premoj@pdx.edu (Jan Premo)

*This is space for you to request or suggest program activities, etc...*

## New Awards and Recognition Committee Leader...

Hello everyone!

I am Maritess and I am spearheading the Awards and Recognition Committee.

I would like to give you a brief background of myself.

I grew up in a tropical marine country called the Philippines, a country composed of roughly 7100 islands. The separation of islands contributed to the emergence of 300 dialects but I only speak one – that is, Tagalog. Filipinos are known to be hospitable and friendly; and hopefully, you'll find that characteristic in me as well. (If not, tough luck!) I am married with two kids. I have lived here for 12 years and loved the American Christian values and democratic way of government.

I used to work as a staff writer for a weekly Christian magazine and I enjoy meeting and interviewing people. I would love to meet all of you in a personal way.

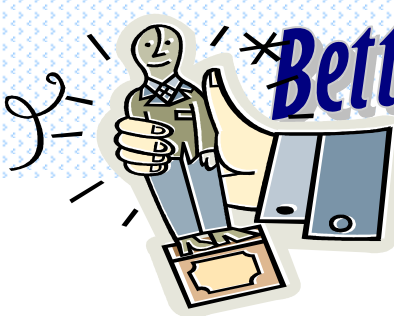


As Awards and Recognition Coordinator I am responsible for soliciting nominations of students as well as faculty members who have made outstanding contributions in the field of counseling. These outstanding individuals are recognized during the year end graduation party that occurs in June. I also coordinate the students' participation at the annual American Counseling Association convention that occurs in March.

The Awards Com shall have a committee that reviews and periodically consider recommendations for new awards. So if any of you are actively involved in promoting excellence in the counseling profession, please feel free to let me know about your work and accomplishments. And if you have any idea for new awards and fundraising projects, I would love to hear from you!

I am looking forward to a successful year with many students providing outstanding services in the counseling profession. Please let Chi Sigma Iota know about your service because we are behind you in your endeavors as counselors!

Always open for more ideas for the newsletter, send an email with your thoughts to Jan Premo



### *As We Leave PSU's Counseling Corridors...*

Many of us who are graduating from the Counselor Education program this spring and summer will undoubtedly remember the great collegiality and support rendered by one of our own cohort classmates – Betty Foufos. I first encountered Betty at our program orientation three years ago, and it was shortly thereafter that she

## *Betty Foufos Recognized for service!*

became the Graduate Assistant to Glenn Maynard in the Counseling Clinic on the famous 5<sup>th</sup> Floor of Education. In this role, which she has held and performed admirably in for these past three years, Betty provided a strong sense of adhesiveness and continuity among the numerous Practicum Clinics, bridging what would sometimes otherwise be challenging gaps between these groups. Serving as lead intaker, Betty was chiefly responsible for capturing and conveying critical information about new clients for the Practicum students, supervisors, and

faculty advisors. Her notes often helped us in considering optimal match-ups of students with clients, and over time, more and more students and supervisors relied on her input and opinions about various client situations. She also had a very good organizational flair, and so helped keep the Clinic in fine running order. I think that we all owe her much appreciation, and I wish for her every success as she moves along in her professional work. Thank you Betty!

Vincent P. Dimone  
[vpdimone@gte.net](mailto:vpdimone@gte.net)

## Want Ads, items for sale & announcements:



This space is for students and faculty. Contact Jan Premo at [premoj@pdx.edu](mailto:premoj@pdx.edu) to request space.

Items such as study groups and the location and time can be listed here, as well

Note: I'm looking for a very inexpensive place to live (\$200-\$300--with an offer to trade housework as part of the deal) that is centrally located near PSU. If you have such a space, or know of one, please contact me by email: [yevka@hevanet.com](mailto:yevka@hevanet.com) or by phone: cell-503-807-6763, home-503-695-3418. Tess... Yveka, Marriage and Family track.

as parties that you want to

put together and make sure everyone is invited. This would be a good location for requesting or selling books from previous students.

Please note that the newsletter comes out once each quarter so inquire about deadlines.

# Yveka and Worsley Recognized

On June 13, 2003 Chi Sigma Iota recognized Ms. Tess Tevka and Mr. Jim Worsley for their outstanding contributions to the counseling field at the 18<sup>th</sup> Annual end of the Year Celebration for Counseling Students. Both individuals were nominated by their classmates to receive recognition for their services and achievements.

Tess worked as an event producer with Yebo!, an organization that supports charities in their fight against AIDS and HIV in Africa. Yebo!, collaborating with Portland Community College's Black Student Union, sponsored an event called "Ubuntu" on May 9<sup>th</sup>. Their goal was to raise awareness about AIDS and its devastating effects, and to raise money to build a

community center in the village of Ntandabantu in Kwa-Zulu-Natal, South Africa. Tess helped coordinate an educational video, an international AID worker, native dancing and dress, and refreshments. Tess also works with the "Girls Initiative Network," an organization for the



empowerment of young girls by volunteering to lead a weekly support group.

Jim Worsley is the Deputy Director of Vocational Services at Goodwill Industries of the Columbia Willamette. He was selected by Goodwill Industries

International, Inc. to receive the Robert E. and Charlotte Watkins Award for Excellence in Mission Advancement for 2003. The award is given yearly to a Goodwill leader who has made an innovative contribution to the advancement of the Goodwill mission. He was presented with the award at the 2003 Delegate Assembly, June 21-24 in Greensboro, North Carolina.

We are very proud of Jim and his desire for excellence in the field of counseling. His influence in our program will benefit all of us.

# Fall—Academic Calendar for 2003-04 School Year.

October 12

Last day to add classes or make section changes w/out instructor approval.

Last day of 85% refund period.

October 26

Last day to drop w/out course appearing on transcript.

November 11

Veteran's Day observed-  
**University closed.**

November 12

Pre-term registration for Winter Quarter begins (tentative).

November 27-28

**Thanksgiving holiday-  
University closed.** Classes on Wednesday evening and Saturday meet as scheduled.

December 5

Fall Quarter classes end. December 8-13

***Final exams.***

December 12

December 22—January 4th

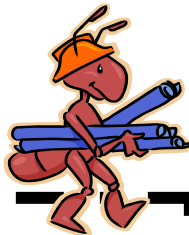
Christmas Break

## RECOVERY TIME

December 25, Holiday, Christmas

January 1, 2004 Happy New Year

January 5th, first day of class...



- Students and Alumni may access part-time and full-time job listing from the web and set up search criteria and email notification when new opportunities come up. **www.career.pdx.edu**

### Conference cont...

information about going to next year's convention in Kansas City, email me at ..... (I heard it is home of good Jazz and BBQ).

Many universities hold parties in their schools name and invite the friends that they have met during the week or at previous conferences. Wouldn't it be fun if we got enough PSU students to attend so that we could throw a party.

**Tip #1**-if you register before summer the rate is cheaper.

**Tip #2**-Students can also volunteer at an educational workshop in order to get free registration.

**Start Planning and saving now to go as a group to the 2004 conference**

## The team that's working for you....

### Chi Sigma Iota

**President**-Mark Stauffer, sosetsu@yahoo.com

**President Elect**-Steve O'Sullivan, osullivansummit@yahoo.com

**Vice President**-Tracy Braden, tbraden@pdx.edu

**Treasurer/Development**-Meghan Campbell

**Secretary**-Brenda Dau, juneaubird@yahoo.com

**Advocacy Chair**-Kelly Polychronis, kellypoly@msn.com

**Alumni Membership Chair**-Todd Meier, wtmeier@agora.rdrop.com

**Membership Chair**-Alexa Memory, aamemory@yahoo.com

**Awards and Recognition Chair**-Maritess Mayer, marijade@hotmail.com

**Newsletter Editor**-Jan Premo, premoj@pdx.edu

**CEU Committee Chair**-Brenda Dau, juneaubird@yahoo.com

**Mentorship Committee Chair**-Debbie Lattimore, debby\_lattimore@hotmail.com

**Supporters**-Suzanne Simon, Suzanne\_simon2000@yahoo.com and Kari Subotnick, ksubot@spiritone.com

**Faculty Advisor**-Dr. David Capuzzi, capuzzida@pdx.edu