



## 2019 ANNUAL OREGON POPULATION REPORT TABLES

The population data in the 2019 annual report tables were compiled by the Population Research Center, Portland State University, 4/15/2020.

The tables in this workbook present the 2019 population estimates produced by the Population Research Center, Portland State University. The July 1 estimates of total population for counties and cities and towns were certified December 15, 2019.

Some tables include the U.S. Census Bureau's decennial Census counts and historical population estimates produced by our Center, and other tables include calculations of change since Census 2010. Also included are population estimates for broad age groups and 5-year age groups; the estimates for broad age groups were certified December 31, 2019.

There are footnotes that accompany Tables 1 through 7.

### Contents of Sheets:

#### Sheet Name

Table 1:

#### Table Name and description

**Annual Population and Components of Population Change for Oregon: 1960-2019; July 1 Population Estimates and April Census Counts.**

*Annual populations, population change and the components of population change (births, deaths, natural increase, and net migration) are reported for Oregon. Two graphs are included, one displays annual growth rates, and the other shows the magnitude of change due to natural increase (the number of births minus the number of deaths), and net migration (the number of movers in minus the number of movers out).*

Table 2:

**Population Estimates of Oregon by Area type and Specific Metropolitan Areas: 2000 to 2019.**

*Population estimates are aggregated for incorporated and unincorporated, metropolitan and non-metropolitan areas in Oregon. Populations are also reported for each of Oregon's eight Metropolitan Statistical Areas, as designated by the U.S. Census Bureau.*

Table 3:

**Components of Population Change for Oregon's Counties: April 1, 2010 to July 1, 2019.**

*Populations are reported for Oregon and the 36 counties; population change and the components of population change from 2010 to 2019 are also included.*

Table 4:

**Population for Oregon and its Counties and Incorporated Cities and Towns: July 1, 2010-July 1, 2019; and Census Counts 1990-2010.**

*Annual population estimates from 2010-2019 are reported along with April 1 Census counts from 1990-2010. Sub-county population estimates are grouped by county; cities that are split between counties are reported in parts respective to their county location. Population estimates for the county unincorporated areas are also reported; an estimate for the unincorporated area is a residual of the county total and the sum of the cities within that county. Note that Census 2000 includes slight revisions to account for challenges to the census counts in the U.S. Census Bureau's Count Question Resolution Program.*

**Table 5: Populations for Incorporated Cities Located in More than One County.**

*Annual population estimates for 2010-2019, and 2000 and 2010 Census counts, for city parts by county are reported in this table.*

**Table 6: Rank of Incorporated Cities and Towns by July 1, 2019 Population Size.**

*This table displays the rank order of Oregon's incorporated cities and towns by 2019 population size, largest to smallest.*

**Table 7: Alphabetical Listing of Oregon's Incorporated Cities and Towns with Populations for July 1, 2019 and Census 2010, and Change since Census 2010.**

*Population estimates for 2019 and Census counts for 2010 are reported, along with numerical and percentage change during the time period.*

**Table 8: Population Added to Incorporated Cities Due to Annexations: April 1, 2010 - July 1, 2019.**

*This table is a listing of Oregon's cities and towns in alphabetical order with the numbers of persons they have annexed since Census 2010.*

**Table 9: Population Estimates by Age and Sex for Oregon and Its Counties: July 1, 2019.**

*Population estimates for Oregon's counties by 5-year age group are reported in three tables: 1) total population; 2) male population; and 3) female population. Population estimates for ages 15-19 are split into 15-17 and 18-19 age groups.*

**Table 10: Population Estimates by Broad Age Group (<18 Years, 18-64 Years, & over 64 Years)**

*Population Estimates for ages 0-17 years, 18-64 years, and 65 years and older are reported in this table for Oregon and its counties.*

**Additional Notes**

The City of Tualatin's 2015 population estimate includes a correction for double-counting in its 2014 estimate.

**Contact information \***

[askprc@pdx.edu](mailto:askprc@pdx.edu); 503-725-3922

**Table 1. Population and Components of Population Change for Oregon: 1960 to 2019**  
**July 1 Population Estimates and April 1 Census Counts**

Prepared by Population Research Center, PSU, April 2020.

<b>Date</b>	<b>Population</b>	<b>Population Change</b>	<b>Births</b>	<b>Deaths</b>	<b>Natural Increase</b>	<b>Net Migration</b>
<b>April 1, 1960</b>	<b>1,768,687</b>					
July 1, 1961	1,798,000	29,313	31,660	14,060	17,600	11,713
July 1, 1962	1,828,000	30,000	36,535	16,735	19,800	10,200
July 1, 1963	1,856,000	28,000	32,971	16,171	16,800	11,200
July 1, 1964	1,884,000	28,000	32,687	17,287	15,400	12,600
July 1, 1965	1,912,000	28,000	32,585	17,785	14,800	13,200
July 1, 1966	1,947,200	35,200	31,210	17,710	13,500	21,700
July 1, 1967	1,980,000	32,800	30,711	18,211	12,500	20,300
July 1, 1968	2,018,900	38,900	32,464	19,364	13,100	25,800
July 1, 1969	2,057,000	38,100	34,423	20,123	14,300	23,800
<b>April 1, 1970</b>	<b>2,091,533</b>	<b>34,533</b>	<b>25,755</b>	<b>14,657</b>	<b>11,099</b>	<b>23,434</b>
July 1, 1970	2,099,150	7,617	8,838	4,883	3,956	3,661
July 1, 1971	2,129,900	30,750	34,349	19,809	14,540	16,210
July 1, 1972	2,167,000	37,100	31,332	19,532	11,800	25,300
July 1, 1973	2,217,600	50,600	30,939	20,439	10,500	40,100
July 1, 1974	2,271,900	54,300	31,123	20,223	10,900	43,400
July 1, 1975	2,326,200	54,300	32,934	20,234	12,700	41,600
July 1, 1976	2,386,700	60,500	33,613	20,013	13,600	46,900
July 1, 1977	2,451,900	65,200	37,546	21,246	16,300	48,900
July 1, 1978	2,521,900	70,000	37,231	20,131	17,100	52,900
July 1, 1979	2,584,300	62,400	41,271	21,471	19,800	42,600
<b>April 1, 1980</b>	<b>2,633,156</b>	<b>48,856</b>	<b>31,555</b>	<b>15,951</b>	<b>15,604</b>	<b>33,252</b>
July 1, 1980	2,639,915	6,759	10,773	5,439	5,334	1,425
July 1, 1981	2,660,735	20,820	42,052	21,675	20,377	444
July 1, 1982	2,656,185	-4,550	42,261	21,548	20,713	-25,263
July 1, 1983	2,635,000	-21,185	40,378	22,039	18,339	-39,524
July 1, 1984	2,660,000	25,000	39,611	22,702	16,909	8,091
July 1, 1985	2,675,800	15,800	39,296	23,531	15,765	35
July 1, 1986	2,661,500	-14,300	39,332	23,403	15,929	-30,229
July 1, 1987	2,690,000	28,500	38,702	23,695	15,007	13,493
July 1, 1988	2,741,000	51,000	39,120	24,752	14,368	36,632
July 1, 1989	2,791,000	50,000	40,648	24,705	15,943	34,057
<b>April 1, 1990</b>	<b>2,842,321</b>	<b>51,321</b>	<b>31,319</b>	<b>18,608</b>	<b>12,711</b>	<b>38,610</b>
July 1, 1990	2,847,000	4,679	10,708	6,268	4,439	240
July 1, 1991	2,927,800	80,800	42,644	25,004	17,640	63,160

Date	Population	Population Change	Births	Deaths	Natural Increase	Net Migration
July 1, 1992	2,990,610	62,810	42,427	25,166	17,261	45,549
July 1, 1993	3,059,110	68,500	41,442	26,543	14,899	53,601
July 1, 1994	3,119,940	60,830	41,487	27,564	13,923	46,907
July 1, 1995	3,182,690	62,750	42,426	27,552	14,874	47,876
July 1, 1996	3,245,100	62,410	43,196	28,768	14,428	47,982
July 1, 1997	3,302,140	57,040	43,625	29,201	14,424	42,616
July 1, 1998	3,350,080	47,940	44,696	28,705	15,991	31,949
July 1, 1999	3,393,410	43,330	45,188	29,848	15,340	27,990
<b>April 1, 2000</b>	3,421,436	28,026	33,805	21,827	11,978	16,048
July 1, 2000	3,431,085	9,649	11,729	7,082	4,647	5,002
July 1, 2001	3,470,385	39,300	45,536	29,934	15,602	23,698
July 1, 2002	3,502,588	32,203	44,995	30,828	14,167	18,036
July 1, 2003	3,538,591	36,003	45,686	30,604	15,082	20,921
July 1, 2004	3,578,895	40,303	45,599	30,721	14,878	25,425
July 1, 2005	3,626,938	48,043	45,892	30,717	15,175	32,868
July 1, 2006	3,685,206	58,268	46,946	30,771	16,175	42,093
July 1, 2007	3,739,359	54,153	49,404	31,394	18,010	36,143
July 1, 2008	3,784,182	44,823	49,658	32,008	17,650	27,173
July 1, 2009	3,815,775	31,593	47,958	31,382	16,576	15,017
<b>April 1, 2010</b>	3,831,074	15,299	34,364	23,879	10,485	4,814
July 1, 2010rev	3,837,300	6,226	11,892	7,814	4,078	2,148
July 1, 2011	3,857,625	20,325	45,381	32,437	12,944	7,381
July 1, 2012	3,883,735	26,110	44,897	32,804	12,093	14,017
July 1, 2013	3,919,020	35,285	44,969	33,168	11,801	23,484
July 1, 2014	3,962,710	43,690	45,447	33,731	11,716	31,974
July 1, 2015	4,013,845	51,135	45,660	35,318	10,342	40,793
July 1, 2016	4,076,350	62,505	45,647	34,949	10,698	51,807
July 1, 2017	4,141,100	64,750	44,602	36,773	7,829	56,921
July 1, 2018*	4,195,300	54,200	42,906	36,640	6,266	47,934
July 1, 2019**	4,236,400	41,100	42,133	36,191	5,942	35,158

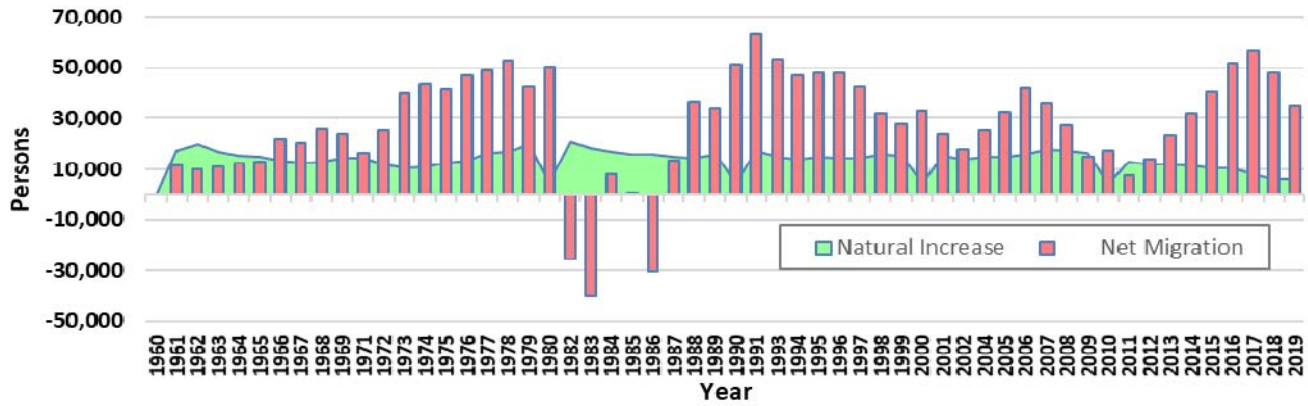
\*\* Preliminary

\* Births and/or Deaths, Natural Increase, and Net Migration are revised from last year's report.

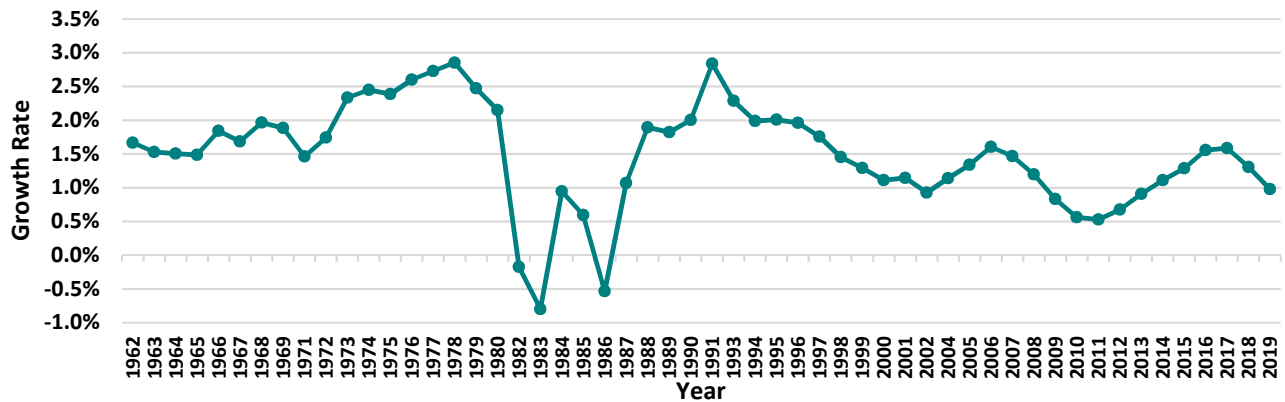
Note: Estimates for July 1, 2000-July 1, 2009 are revised estimates that incorporate Census 2010 (they represent the pattern of migration in the originally certified estimates during the decade and are adjusted to be consistent with Census 2010).

For full year July to July population change in a year that includes a decennial census, add together population change reported for April and in July of the same year.

### Components of Oregon's Annual Population Change



### Annual Population Growth Rates for Oregon





**Table 2. Population Estimates of Oregon by Area Type and Specific Metropolitan Areas: 2000 to 2019**

Prepared by Population Research Center, PSU, April 2020.

<b>Area Type</b>					
<b>Date</b>	<b>State</b>	<b>Incorporated</b>	<b>Un- incorporated</b>	<b>Metropolitan*</b>	<b>Non- metropolitan</b>
April 1, 2000	3,421,436	2,280,362	1,141,074	2,617,759	803,677
April 1, 2010	3,831,074	2,669,922	1,161,152	2,978,551	852,523
July 1, 2010rev	3,837,300	2,673,543	1,163,757	2,983,855	853,445
July 1, 2011	3,857,625	2,684,812	1,172,813	3,002,340	855,285
July 1, 2012	3,883,735	2,696,792	1,186,943	3,026,075	857,660
July 1, 2013	3,919,020	2,716,667	1,202,353	3,258,960	660,060
July 1, 2014	3,962,710	2,744,907	1,217,803	3,299,380	663,330
July 1, 2015	4,013,845	2,776,942	1,236,903	3,346,195	667,650
July 1, 2016	4,076,350	2,816,752	1,259,598	3,403,360	672,990
July 1, 2017	4,141,100	2,845,177	1,295,923	3,462,370	678,730
July 1, 2018	4,195,300	2,879,877	1,315,423	3,513,315	681,985
July 1, 2019	4,236,400	2,917,012	1,319,388	3,550,900	685,500

<b>Metropolitan Areas</b>								
<b>Date</b>	<b>Portland- Vancouver- Hillsboro</b>	<b>Eugene- Springfield</b>	<b>Medford</b>	<b>Salem</b>	<b>Corvallis</b>	<b>Bend- Redmond</b>	<b>Albany</b>	<b>Grants Pass</b>
April 1, 2000	1,927,881	322,977	181,273	347,218	78,153	115,367		
April 1, 2010	2,226,009	351,715	203,206	390,738	85,579	157,733		
July 1, 2010rev	2,230,578	352,010	203,340	391,395	85,735	157,905		
July 1, 2011	2,246,083	353,155	203,950	394,115	85,995	158,875		
July 1, 2012	2,266,573	354,200	204,630	397,120	86,785	160,140		
July 1, 2013	2,292,725	356,125	206,310	399,945	87,725	162,525	118,665	82,815
July 1, 2014	2,326,397	358,805	208,375	403,885	88,740	166,400	119,705	83,105
July 1, 2015	2,364,954	362,150	210,975	408,340	90,005	170,740	120,860	83,720
July 1, 2016	2,409,884	365,940	213,765	413,680	91,320	176,635	122,315	84,675
July 1, 2017	2,454,774	370,600	216,900	420,200	92,575	182,930	124,010	85,650
July 1, 2018	2,491,885	375,120	219,200	426,135	93,590	188,980	125,575	86,395
July 1, 2019	2,522,223	378,880	221,290	430,700	94,360	193,000	126,550	86,750

Portland-Vancouver-Hillsboro, OR-WA MSA consists of Clackamas, Columbia, Multnomah, Washington, and Yamhill Counties in Oregon and Clark and Skamania Counties in Washington. It was renamed by the Census Bureau in Feb. 2013 from Portland-Vancouver-Beaverton MSA. July 1 populations for Clark and Skamania counties were estimated by PRC by extrapolating Washington State Office of Financial Management's April 1 estimates to July 1.

Eugene-Springfield MSA consists of Lane County.

Medford MSA consists of Jackson County.

Salem MSA consists of Marion and Polk Counties.

Corvallis MSA consists of Benton County.

Bend-Redmond MSA consists of Deschutes County. Bend-Redmond MSA was renamed in Feb. 2013 by the Census Bureau from Bend MSA.

Albany MSA consists of Linn County; it was designated as an MSA in Feb. 2013 by the Census Bureau.

Grants Pass MSA consists of Josephine County. It was designated as an MSA in Feb. 2013 by the Census Bureau.

\*The Sum of Oregon Metropolitan Areas excluding Clark and Skamania Counties in Washington State.



**Table 3. Components of Population Change for Oregon and its Counties: April 1, 2010 to July 1, 2019**

Prepared by Population Research Center, PSU, April 2020.

	July 1, 2019 Estimate	April 1, 2010 Census	Numeric Change April 2010 to July 2019	Percent Change April 2010 to July 2019	Average Annual Change since Census	Births* 2010-19	Deaths* 2010-19	Natural Increase 2010-19	Net Migration 2010-19
OREGON	4,236,400	3,831,074	405,326	10.6%	1.1%	413,490	319,747	93,743	311,583
BAKER	16,820	16,134	686	4.3%	0.5%	1,504	1,928	-424	1,110
BENTON	94,360	85,579	8,781	10.3%	1.1%	6,681	5,257	1,424	7,357
CLACKAMAS	423,420	375,992	47,428	12.6%	1.3%	37,208	30,184	7,024	40,404
CLATSOP	39,330	37,039	2,291	6.2%	0.7%	3,771	3,645	126	2,165
COLUMBIA	52,750	49,351	3,399	6.9%	0.7%	4,583	4,072	511	2,888
COOS	63,290	63,043	247	0.4%	0.0%	5,638	8,241	-2,603	2,850
CROOK	23,440	20,978	2,462	11.7%	1.2%	1,952	2,331	-379	2,841
CURRY	23,000	22,364	636	2.8%	0.3%	1,642	3,427	-1,785	2,421
DESCHUTES	193,000	157,733	35,267	22.4%	2.2%	16,236	12,929	3,306	31,961
DOUGLAS	112,250	107,667	4,583	4.3%	0.5%	10,005	13,319	-3,314	7,897
GILLIAM	1,990	1,871	119	6.4%	0.7%	163	180	-17	136
GRANT	7,360	7,445	-85	-1.1%	-0.1%	578	797	-219	134
HARNEY	7,360	7,422	-62	-0.8%	-0.1%	723	784	-61	-1
HOOD RIVER	25,480	22,346	3,134	14.0%	1.4%	2,542	1,673	869	2,265
JACKSON	221,290	203,206	18,084	8.9%	0.9%	21,202	21,274	-72	18,156
JEFFERSON	23,840	21,720	2,120	9.8%	1.0%	2,658	1,906	752	1,368
JOSEPHINE	86,750	82,713	4,037	4.9%	0.5%	7,716	11,093	-3,377	7,414
KLAMATH	68,190	66,380	1,810	2.7%	0.3%	7,360	7,057	304	1,506
LAKE	8,080	7,895	185	2.3%	0.3%	662	855	-193	378
LANE	378,880	351,715	27,165	7.7%	0.8%	32,382	31,917	465	26,700
LINCOLN	48,260	46,034	2,226	4.8%	0.5%	3,901	5,429	-1,527	3,753
LINN	126,550	116,672	9,878	8.5%	0.9%	13,576	11,448	2,128	7,750
MALHEUR	32,030	31,313	717	2.3%	0.2%	3,925	2,820	1,105	-388
MARION	347,760	315,335	32,425	10.3%	1.1%	40,419	25,082	15,336	17,089
MORROW	12,680	11,173	1,507	13.5%	1.4%	1,482	715	767	740
MULTNOMAH	821,730	735,334	86,396	11.7%	1.2%	84,074	51,771	32,303	54,093
POLK	82,940	75,403	7,537	10.0%	1.0%	8,059	6,258	1,802	5,735
SHERMAN	1,770	1,765	5	0.3%	0.0%	163	167	-4	9
TILLAMOOK	26,500	25,250	1,250	5.0%	0.5%	2,283	2,690	-407	1,657
UMATILLA	81,160	75,889	5,271	6.9%	0.7%	9,524	5,989	3,536	1,735
UNION	26,840	25,748	1,092	4.2%	0.5%	2,728	2,470	258	834
WALLOWA	7,150	7,008	142	2.0%	0.2%	550	794	-244	386
WASCO	27,240	25,213	2,027	8.0%	0.8%	2,819	2,937	-118	2,145
WASHINGTON	613,410	529,710	83,700	15.8%	1.6%	64,340	29,788	34,552	49,148
WHEELER	1,440	1,441	-1	-0.1%	0.0%	98	182	-84	83
YAMHILL	108,060	99,193	8,867	8.9%	0.9%	10,338	8,316	2,023	6,844

\*The numbers of births and deaths in the most recent year are revised annually, affecting the corresponding numbers of net migrants.

**Table 4. Populations for Oregon and Its Counties and Incorporated Cities and Towns:  
July 1, 2010 - July 1, 2019 estimates; Census Counts 1990-2010**

Prepared by Population Research Center, PSU, April 2020.

County and Cities	July 1 Population Estimates										April 1 Census Population		
	2019	2018	2017	2016	2015	2014	2013	2012	2011	2010rev	2010	2000	1990
<b>OREGON</b>	4,236,400	4,195,300	4,141,100	4,076,350	4,013,845	3,962,710	3,919,020	3,883,735	3,857,625	3,837,300	3,831,074	3,421,436	2,842,321
<b>BAKER</b>	16,820	16,765	16,750	16,510	16,425	16,325	16,280	16,210	16,215	16,185	16,134	16,741	15,317
Baker City	9,965	9,890	9,890	9,890	9,890	9,890	9,890	9,890	9,890	9,830	9,828	9,860	9,140
Greenhorn	2	2	2	2	2	2	2	2	2	2	-	-	-
Haines	415	415	415	415	415	415	415	415	415	415	416	426	405
Halfway	295	295	290	290	290	290	290	290	290	290	288	337	311
Huntington	445	445	445	445	445	445	445	440	440	440	440	515	522
Richland	175	175	175	175	175	175	175	160	160	155	156	147	161
Sumpter	205	205	205	205	205	205	205	205	205	205	204	171	119
Unity	75	75	75	75	75	70	70	70	70	70	71	131	87
Unincorporated	5,243	5,263	5,253	5,013	4,928	4,833	4,788	4,738	4,743	4,778	4,731	5,154	4,572
<b>BENTON</b>	94,360	93,590	92,575	91,320	90,005	88,740	87,725	86,785	85,995	85,735	85,579	78,153	70,811
Adair Village	900	860	850	845	845	845	845	845	840	840	840	536	554
Albany (part)*	8,255	7,945	7,720	7,647	7,267	7,146	6,912	6,764	6,698	6,587	6,463	5,104	15
Corvallis	58,885	59,280	58,735	58,240	57,390	56,535	55,345	55,055	54,520	54,460	54,462	49,322	44,757
Monroe	640	625	620	620	620	620	620	615	615	615	617	607	448
Philomath	4,900	4,715	4,710	4,665	4,650	4,630	4,625	4,620	4,610	4,590	4,584	3,838	2,983
Unincorporated	20,780	20,165	19,940	19,303	19,233	18,964	19,378	18,886	18,712	18,643	18,613	18,746	22,054
<b>CLACKAMAS</b>	423,420	419,425	413,000	404,980	397,385	391,525	386,080	381,680	378,480	376,780	375,992	338,391	278,850
Barlow	135	135	135	135	135	135	135	135	135	135	135	140	118
Canby	16,950	16,800	16,660	16,420	16,010	16,010	15,910	15,865	15,830	15,830	15,829	12,790	8,990
Damascus**		Disincorporated		10,625	10,625	10,625	10,595	10,585	10,575	10,540	10,539	Not incorporated yet.	
Estacada	3,725	3,400	3,280	3,155	3,085	2,935	2,900	2,850	2,850	2,730	2,695	2,371	2,016
Gladstone	11,905	11,880	11,840	11,660	11,505	11,495	11,495	11,495	11,495	11,495	11,497	11,438	10,152
Happy Valley	21,700	20,945	19,985	18,680	17,510	16,480	15,575	14,965	14,330	14,100	13,903	4,519	1,519
Johnson City	565	560	565	565	565	565	565	565	565	565	566	634	586
Lake Oswego (part)*	36,545	35,645	34,920	34,855	34,730	34,538	34,427	34,206	34,165	34,067	34,066	32,989	28,317
Milwaukie	20,535	20,525	20,550	20,510	20,505	20,485	20,500	20,435	20,400	20,290	20,291	20,490	18,670
Molalla	9,885	9,625	9,610	9,085	8,940	8,820	8,110	8,110	8,110	8,110	8,108	5,647	3,637
Oregon City	35,570	34,860	34,610	34,240	33,940	33,760	33,390	32,500	32,220	31,995	31,859	25,754	14,698
Portland (part)*	770	770	770	766	762	760	749	749	747	744	744	747	707

County and Cities	July 1 Population Estimates										April 1 Census Population		
	2019	2018	2017	2016	2015	2014	2013	2012	2011	2010rev	2010	2000	1990
Rivergrove (part)*	470	470	464	459	458	451	411	386	344	258	257	287	267
Sandy	11,075	10,990	10,855	10,655	10,395	10,170	9,990	9,880	9,780	9,655	9,570	5,385	4,154
Tualatin (part)*	3,065	2,925	2,911	2,911	2,864	2,903	2,904	2,905	2,869	2,869	2,862	2,664	1,406
West Linn	25,905	25,830	25,695	25,615	25,605	25,540	25,425	25,370	25,250	25,150	25,109	22,261	16,389
Wilsonville (part)*	22,730	22,345	21,835	21,260	20,476	19,594	19,187	18,267	17,421	17,385	17,371	13,987	7,096
Unincorporated	201,890	201,720	198,315	183,383	179,275	176,259	173,811	172,412	171,395	170,862	170,591	176,288	160,128
<b>CLATSOP</b>	<b>39,330</b>	<b>39,200</b>	<b>38,820</b>	<b>38,225</b>	<b>37,750</b>	<b>37,495</b>	<b>37,270</b>	<b>37,190</b>	<b>37,145</b>	<b>37,070</b>	<b>37,039</b>	<b>35,630</b>	<b>33,301</b>
Astoria	9,690	9,695	9,735	9,770	9,580	9,590	9,525	9,555	9,495	9,475	9,477	9,813	10,069
Cannon Beach	1,730	1,710	1,705	1,710	1,705	1,705	1,705	1,705	1,700	1,695	1,690	1,588	1,221
Gearhart	1,525	1,505	1,480	1,480	1,480	1,475	1,480	1,475	1,465	1,465	1,462	995	1,027
Hammond											Merged with Warrenton in 1991		589
Seaside	6,585	6,660	6,620	6,605	6,585	6,560	6,560	6,550	6,490	6,460	6,457	5,900	5,359
Warrenton	5,320	5,310	5,285	5,265	5,175	5,175	5,135	5,090	5,050	5,000	4,989	4,096	2,681
Unincorporated	14,480	14,320	13,995	13,395	13,225	12,990	12,865	12,815	12,945	12,975	12,964	13,238	12,355
<b>COLUMBIA</b>	<b>52,750</b>	<b>51,900</b>	<b>51,345</b>	<b>50,795</b>	<b>50,390</b>	<b>50,075</b>	<b>49,850</b>	<b>49,680</b>	<b>49,625</b>	<b>49,430</b>	<b>49,351</b>	<b>43,560</b>	<b>37,557</b>
Clatskanie	1,775	1,765	1,760	1,750	1,750	1,750	1,745	1,740	1,740	1,735	1,737	1,528	1,629
Columbia City	1,985	1,985	1,985	1,965	1,955	1,945	1,945	1,950	1,950	1,945	1,946	1,571	1,003
Prescott	55	55	55	55	55	55	55	55	55	55	55	72	63
Rainier	1,940	1,925	1,910	1,905	1,905	1,905	1,900	1,895	1,895	1,895	1,895	1,687	1,674
St. Helens	13,410	13,240	13,240	13,120	13,095	12,990	12,895	12,920	12,890	12,905	12,883	10,019	7,535
Scappoose	7,270	7,200	6,875	6,785	6,745	6,700	6,700	6,685	6,665	6,630	6,592	4,976	3,529
Vernonia	2,095	2,065	2,065	2,065	2,065	2,065	2,065	2,080	2,110	2,155	2,151	2,228	1,808
Unincorporated	24,220	23,665	23,455	23,150	22,820	22,665	22,545	22,355	22,320	22,110	22,092	21,479	20,316
<b>COOS</b>	<b>63,290</b>	<b>63,275</b>	<b>63,310</b>	<b>63,190</b>	<b>62,990</b>	<b>62,900</b>	<b>62,860</b>	<b>62,890</b>	<b>62,960</b>	<b>63,035</b>	<b>63,043</b>	<b>62,788</b>	<b>60,273</b>
Bandon	3,220	3,155	3,125	3,125	3,105	3,105	3,100	3,100	3,085	3,075	3,066	2,833	2,224
Coos Bay	16,700	16,680	16,615	16,615	16,470	16,315	16,160	16,060	16,010	15,970	15,967	15,372	15,076
Coquille	3,920	3,915	3,915	3,920	3,870	3,870	3,850	3,870	3,865	3,865	3,866	4,184	4,121
Lakeside	1,750	1,735	1,725	1,725	1,705	1,705	1,705	1,700	1,695	1,695	1,699	1,421	1,437
Myrtle Point	2,535	2,535	2,535	2,525	2,525	2,525	2,525	2,515	2,515	2,515	2,514	2,451	2,712
North Bend	9,925	9,815	9,800	9,775	9,755	9,730	9,720	9,710	9,710	9,695	9,695	9,544	9,614
Powers	695	695	695	695	695	700	695	695	690	690	689	734	682
Unincorporated	24,545	24,745	24,900	24,810	24,865	24,950	25,105	25,240	25,390	25,530	25,547	26,249	24,407
<b>CROOK</b>	<b>23,440</b>	<b>22,710</b>	<b>22,105</b>	<b>21,580</b>	<b>21,085</b>	<b>20,780</b>	<b>20,690</b>	<b>20,650</b>	<b>20,855</b>	<b>21,020</b>	<b>20,978</b>	<b>19,184</b>	<b>14,111</b>
Prineville	10,220	10,010	9,880	9,645	9,460	9,385	9,270	9,245	9,260	9,260	9,253	7,358	5,355
Unincorporated	13,220	12,700	12,225	11,935	11,625	11,395	11,420	11,405	11,595	11,760	11,725	11,826	8,756

County and Cities	July 1 Population Estimates										April 1 Census Population		
	2019	2018	2017	2016	2015	2014	2013	2012	2011	2010rev	2010	2000	1990
<b>CURRY</b>	23,000	22,915	22,805	22,600	22,470	22,355	22,300	22,295	22,335	22,355	22,364	21,137	19,327
Brookings	6,645	6,630	6,595	6,550	6,565	6,535	6,450	6,370	6,360	6,350	6,336	5,447	4,400
Gold Beach	2,290	2,265	2,275	2,275	2,275	2,275	2,275	2,280	2,255	2,255	2,253	1,897	1,546
Port Orford	1,150	1,145	1,145	1,140	1,140	1,135	1,135	1,135	1,135	1,135	1,133	1,153	1,025
Unincorporated	12,915	12,875	12,790	12,635	12,490	12,410	12,440	12,510	12,585	12,615	12,642	12,640	12,356
<b>DESCHUTES</b>	193,000	188,980	182,930	176,635	170,740	166,400	162,525	160,140	158,875	157,905	157,733	115,367	74,958
Bend	91,385	89,505	86,765	83,500	81,310	79,985	78,280	77,455	76,925	76,740	76,639	52,029	20,447
La Pine	1,900	1,840	1,730	1,675	1,670	1,670	1,670	1,670	1,670	1,660	1,653	Not incorporated yet.	
Redmond	30,600	29,190	28,265	27,595	27,050	26,770	26,590	26,345	26,305	26,225	26,215	13,481	7,165
Sisters	2,985	2,725	2,540	2,390	2,280	2,190	2,115	2,080	2,055	2,040	2,038	959	708
Unincorporated	66,130	65,720	63,630	61,475	58,430	55,785	53,870	52,590	51,920	51,240	51,188	48,898	46,638
<b>DOUGLAS</b>	112,250	111,735	111,180	110,395	109,910	109,385	108,850	108,195	107,795	107,690	107,667	100,399	94,649
Canyonville	1,975	1,920	1,925	1,925	1,905	1,910	1,910	1,910	1,885	1,885	1,884	1,293	1,219
Drain	1,165	1,165	1,160	1,160	1,160	1,160	1,160	1,160	1,155	1,155	1,151	1,021	1,086
Elkton	215	215	210	205	205	205	200	195	195	195	195	147	172
Glendale	860	865	875	875	875	875	875	875	875	875	874	855	707
Myrtle Creek	3,490	3,490	3,490	3,490	3,480	3,465	3,450	3,445	3,440	3,440	3,439	3,419	3,063
Oakland	965	955	945	940	940	935	935	925	925	925	927	954	844
Reedsport	4,215	4,175	4,155	4,155	4,150	4,150	4,150	4,145	4,145	4,150	4,154	4,378	4,796
Riddle	1,190	1,190	1,185	1,185	1,185	1,185	1,185	1,185	1,185	1,185	1,185	1,014	1,143
Roseburg	24,890	24,820	24,015	22,820	22,500	22,510	22,275	21,920	21,690	21,660	21,181	20,017	17,069
Sutherlin	8,235	8,140	8,060	8,025	7,975	7,945	7,930	7,905	7,880	7,840	7,810	6,669	5,020
Winston	5,550	5,480	5,410	5,410	5,410	5,410	5,400	5,385	5,385	5,385	5,379	4,613	3,773
Yoncalla	1,070	1,070	1,065	1,065	1,060	1,060	1,060	1,060	1,055	1,050	1,047	1,052	919
Unincorporated	58,430	58,250	58,685	59,140	59,065	58,575	58,320	58,085	57,980	57,945	58,441	54,967	54,838
<b>GILLIAM</b>	1,990	1,985	1,995	1,980	1,975	1,975	1,945	1,900	1,880	1,870	1,871	1,915	1,717
Arlington	615	610	610	605	605	605	605	585	585	585	586	524	425
Condon	690	690	685	695	695	695	695	695	690	685	682	759	635
Lonerock	20	20	20	20	20	20	20	20	20	20	21	24	11
Unincorporated	665	665	680	660	655	655	625	600	585	580	582	608	646
<b>GRANT</b>	7,360	7,400	7,415	7,410	7,430	7,425	7,435	7,450	7,450	7,460	7,445	7,935	7,853
Canyon City	705	705	705	705	705	705	705	715	710	705	703	669	648
Dayville	155	155	155	150	150	150	150	150	150	150	149	138	144
Granite	40	40	40	40	40	40	40	40	40	40	38	24	8

County and Cities	July 1 Population Estimates										April 1 Census Population		
	2019	2018	2017	2016	2015	2014	2013	2012	2011	2010rev	2010	2000	1990
John Day	1,735	1,735	1,735	1,735	1,735	1,745	1,745	1,745	1,755	1,750	1,744	1,821	1,857
Long Creek	195	195	195	195	195	195	195	195	195	195	197	228	249
Monument	130	130	130	130	130	130	130	130	130	130	128	151	162
Mt. Vernon	525	525	525	525	525	525	525	525	525	525	527	595	549
Prairie City	915	915	915	910	910	910	910	910	910	910	909	1,080	1,117
Seneca	200	200	160	215	215	200	200	200	200	200	199	223	191
Unincorporated	2,760	2,800	2,855	2,805	2,825	2,825	2,835	2,840	2,835	2,855	2,851	3,006	2,928
<b>HARNEY</b>	<b>7,360</b>	<b>7,380</b>	<b>7,360</b>	<b>7,320</b>	<b>7,295</b>	<b>7,265</b>	<b>7,260</b>	<b>7,315</b>	<b>7,375</b>	<b>7,445</b>	<b>7,422</b>	<b>7,609</b>	<b>7,060</b>
Burns	2,835	2,830	2,830	2,830	2,830	2,835	2,835	2,835	2,805	2,805	2,806	3,064	2,913
Hines	1,565	1,560	1,560	1,560	1,560	1,560	1,560	1,565	1,565	1,565	1,563	1,623	1,452
Unincorporated	2,960	2,990	2,970	2,930	2,905	2,870	2,865	2,915	3,005	3,075	3,053	2,922	2,695
<b>HOOD RIVER</b>	<b>25,480</b>	<b>25,310</b>	<b>25,145</b>	<b>24,735</b>	<b>24,245</b>	<b>23,730</b>	<b>23,295</b>	<b>22,875</b>	<b>22,625</b>	<b>22,385</b>	<b>22,346</b>	<b>20,411</b>	<b>16,903</b>
Cascade Locks	1,375	1,375	1,310	1,250	1,225	1,235	1,200	1,190	1,165	1,145	1,144	1,115	930
Hood River	8,305	7,990	7,955	7,760	7,685	7,545	7,460	7,375	7,320	7,180	7,167	5,831	4,632
Unincorporated	15,800	15,945	15,880	15,725	15,335	14,950	14,635	14,310	14,140	14,060	14,035	13,465	11,341
<b>JACKSON</b>	<b>221,290</b>	<b>219,200</b>	<b>216,900</b>	<b>213,765</b>	<b>210,975</b>	<b>208,375</b>	<b>206,310</b>	<b>204,630</b>	<b>203,950</b>	<b>203,340</b>	<b>203,206</b>	<b>181,273</b>	<b>146,389</b>
Ashland	20,960	20,815	20,700	20,620	20,405	20,340	20,295	20,325	20,255	20,095	20,078	19,522	16,252
Butte Falls	460	440	430	430	430	430	430	425	425	425	423	439	252
Central Point	18,365	17,895	17,700	17,585	17,485	17,375	17,315	17,275	17,235	17,185	17,169	12,493	7,512
Eagle Point	9,260	9,105	8,930	8,765	8,695	8,635	8,575	8,550	8,520	8,470	8,469	4,797	3,022
Gold Hill	1,220	1,220	1,220	1,220	1,220	1,220	1,220	1,220	1,220	1,220	1,220	1,073	980
Jacksonville	3,015	2,980	2,950	2,920	2,880	2,840	2,840	2,815	2,800	2,785	2,785	2,235	1,896
Medford	81,465	80,375	79,590	78,500	77,655	76,650	75,920	75,545	75,180	74,980	74,907	63,687	47,021
Phoenix	4,650	4,620	4,605	4,585	4,585	4,580	4,570	4,570	4,550	4,540	4,538	4,060	3,239
Rogue River	2,235	2,245	2,220	2,200	2,175	2,155	2,145	2,145	2,140	2,135	2,131	1,851	1,759
Shady Cove	3,145	3,105	3,105	3,040	3,025	3,015	2,920	2,920	2,910	2,905	2,904	2,307	1,351
Talent	6,465	6,380	6,325	6,305	6,270	6,230	6,170	6,115	6,095	6,070	6,066	5,589	3,274
Unincorporated	70,050	70,020	69,125	67,595	66,150	64,905	63,910	62,725	62,620	62,530	62,516	63,220	59,831
<b>JEFFERSON</b>	<b>23,840</b>	<b>23,560</b>	<b>23,190</b>	<b>22,790</b>	<b>22,445</b>	<b>22,205</b>	<b>22,040</b>	<b>21,940</b>	<b>21,845</b>	<b>21,750</b>	<b>21,720</b>	<b>19,009</b>	<b>13,676</b>
Culver	1,560	1,480	1,420	1,410	1,395	1,380	1,370	1,370	1,370	1,365	1,357	802	570
Madras	6,380	6,345	6,300	6,275	6,265	6,260	6,255	6,260	6,225	6,050	6,046	5,078	3,443
Metolius	825	740	740	740	710	700	705	705	710	710	710	729	450
Unincorporated	15,075	14,995	14,730	14,365	14,075	13,865	13,710	13,605	13,540	13,625	13,607	12,400	9,213

County and Cities	July 1 Population Estimates										April 1 Census Population		
	2019	2018	2017	2016	2015	2014	2013	2012	2011	2010rev	2010	2000	1990
<b>JOSEPHINE</b>	86,750	86,395	85,650	84,675	83,720	83,105	82,815	82,775	82,820	82,775	82,713	75,726	62,649
Cave Junction	1,975	1,940	1,935	1,915	1,910	1,905	1,905	1,900	1,885	1,885	1,883	1,363	1,126
Grants Pass	37,485	37,285	37,135	36,815	36,465	35,060	34,855	34,740	34,660	34,555	34,533	23,003	17,503
Unincorporated	47,290	47,170	46,580	45,945	45,345	46,140	46,055	46,135	46,275	46,335	46,297	51,360	44,020
<b>KLAMATH</b>	68,190	67,960	67,690	67,410	67,110	66,910	66,810	66,740	66,580	66,505	66,380	63,775	57,702
Bonanza	455	455	455	455	455	455	455	455	465	471	415	415	323
Chiloquin	740	740	740	735	735	735	735	735	735	735	734	715	673
Klamath Falls	22,000	21,890	21,770	21,640	21,580	21,500	21,495	21,465	21,120	20,925	20,840	19,460	17,737
Malin	820	815	815	815	815	815	815	815	805	805	805	640	725
Merrill	845	840	840	840	840	840	845	845	845	845	844	897	837
Unincorporated	43,330	43,220	43,070	42,925	42,685	42,565	42,465	42,425	42,610	42,724	42,742	41,648	37,407
<b>LAKE</b>	8,080	8,115	8,120	8,015	8,010	7,990	7,940	7,920	7,885	7,890	7,895	7,422	7,186
Lakeview	2,300	2,300	2,300	2,300	2,300	2,300	2,300	2,300	2,300	2,295	2,294	2,474	2,526
Paisley	305	270	270	245	245	245	245	245	245	245	243	247	350
Unincorporated	5,475	5,545	5,550	5,470	5,465	5,445	5,395	5,375	5,340	5,350	5,358	4,701	4,310
<b>LANE</b>	378,880	375,120	370,600	365,940	362,150	358,805	356,125	354,200	353,155	352,010	351,715	322,977	282,912
Coburg	1,295	1,195	1,085	1,070	1,055	1,045	1,045	1,045	1,045	1,040	1,035	969	763
Cottage Grove	10,140	10,005	9,920	9,890	9,875	9,840	9,785	9,770	9,745	9,705	9,686	8,445	7,403
Creswell	5,510	5,455	5,410	5,360	5,125	5,075	5,020	4,990	5,015	5,030	5,031	3,579	2,431
Dunes City	1,345	1,335	1,325	1,320	1,315	1,315	1,310	1,305	1,305	1,305	1,303	1,241	1,081
Eugene	171,210	169,695	167,780	165,885	163,400	160,775	159,580	158,335	157,010	156,295	156,185	137,893	112,733
Florence	8,850	8,795	8,745	8,680	8,620	8,565	8,480	8,470	8,470	8,465	8,466	7,263	5,171
Junction City	6,170	6,125	6,075	6,010	5,870	5,620	5,550	5,445	5,445	5,430	5,392	4,721	3,692
Lowell	1,090	1,075	1,070	1,070	1,065	1,060	1,060	1,055	1,045	1,045	1,045	880	785
Oakridge	3,305	3,280	3,245	3,255	3,240	3,220	3,215	3,210	3,205	3,205	3,205	3,172	3,063
Springfield	61,355	60,865	60,655	60,140	60,135	60,065	59,990	59,840	59,695	59,425	59,403	52,864	44,664
Veneta	4,800	4,790	4,785	4,755	4,700	4,690	4,635	4,610	4,610	4,565	4,561	2,762	2,519
Westfir	265	260	255	255	255	255	255	255	255	255	253	280	278
Unincorporated	103,545	102,245	100,250	98,250	97,495	97,280	96,200	95,870	96,310	96,245	96,150	98,908	98,329
<b>LINCOLN</b>	48,260	48,210	47,960	47,735	47,225	46,890	46,560	46,295	46,155	46,135	46,034	44,479	38,889
Depoe Bay	1,445	1,440	1,440	1,440	1,420	1,410	1,405	1,400	1,400	1,400	1,398	1,174	870
Lincoln City	8,795	8,730	8,665	8,485	8,485	8,400	8,380	7,965	7,960	7,935	7,930	7,437	5,903
Newport	10,285	10,125	10,215	10,190	10,165	10,095	10,160	10,150	10,065	10,030	9,989	9,532	8,437
Siletz	1,235	1,235	1,235	1,235	1,235	1,235	1,235	1,225	1,210	1,210	1,212	1,133	992
Toledo	3,490	3,490	3,485	3,490	3,490	3,485	3,470	3,465	3,485	3,470	3,465	3,472	3,174

County and Cities	July 1 Population Estimates										April 1 Census Population		
	2019	2018	2017	2016	2015	2014	2013	2012	2011	2010rev	2010	2000	1990
Waldport	2,110	2,105	2,095	2,080	2,075	2,060	2,050	2,040	2,040	2,035	2,033	2,050	1,595
Yachats	760	745	740	740	725	720	715	705	710	690	690	617	533
Unincorporated	20,140	20,340	20,085	20,075	19,630	19,485	19,145	19,345	19,285	19,365	19,317	19,064	17,385
<b>LINN</b>	126,550	125,575	124,010	122,315	120,860	119,705	118,665	118,035	117,340	116,840	116,672	103,069	91,227
Albany (part)*	45,865	45,200	44,990	44,893	44,403	44,124	43,808	43,946	43,822	43,738	43,695	35,748	29,525
Brownsville	1,720	1,705	1,705	1,700	1,690	1,680	1,670	1,670	1,670	1,670	1,668	1,449	1,281
Gates (part)*	45	45	43	43	43	43	43	43	42	42	40	42	41
Halsey	940	935	925	915	915	915	915	915	915	910	904	724	667
Harrisburg	3,680	3,660	3,655	3,650	3,645	3,635	3,630	3,630	3,585	3,565	3,567	2,795	1,939
Idanha (part)*	65	62	62	62	62	62	57	57	57	57	57	85	112
Lebanon	17,135	16,920	16,720	16,435	15,740	15,740	15,690	15,660	15,565	15,525	15,518	12,950	10,950
Lyons	1,200	1,195	1,180	1,165	1,160	1,160	1,160	1,160	1,160	1,160	1,161	1,008	938
Mill City (part)*	1,570	1,560	1,555	1,559	1,556	1,549	1,544	1,543	1,539	1,531	1,531	1,225	1,247
Millersburg	2,615	2,315	1,835	1,730	1,620	1,505	1,430	1,375	1,375	1,345	1,329	651	715
Scio	930	920	905	890	850	830	830	830	840	840	838	695	623
Sodaville	345	345	335	335	325	310	310	310	310	310	308	290	192
Sweet Home	9,340	9,225	9,090	9,090	9,090	9,060	9,065	9,025	9,005	8,945	8,925	8,016	6,850
Tangent	1,260	1,250	1,235	1,205	1,200	1,195	1,185	1,180	1,180	1,165	1,164	933	556
Waterloo	235	235	235	230	230	230	230	230	230	230	229	239	191
Unincorporated	39,605	40,003	39,540	38,413	38,330	37,667	37,098	36,461	36,044	35,807	35,738	36,219	35,400
<b>MALHEUR</b>	32,030	31,925	31,845	31,705	31,480	31,470	31,440	31,395	31,445	31,345	31,313	31,615	26,038
Adrian	185	180	180	180	180	180	180	180	180	175	177	147	131
Jordan Valley	175	175	175	175	175	175	175	180	180	180	181	239	364
Nyssa	3,320	3,310	3,285	3,285	3,285	3,285	3,270	3,270	3,270	3,265	3,267	3,163	2,629
Ontario	11,485	11,470	11,465	11,465	11,465	11,465	11,465	11,415	11,375	11,365	11,366	10,985	9,394
Vale	1,875	1,950	1,915	1,885	1,875	1,875	1,890	1,890	1,875	1,875	1,874	1,976	1,491
Unincorporated	14,990	14,840	14,825	14,715	14,500	14,490	14,460	14,460	14,565	14,485	14,448	15,105	12,029
<b>MARION</b>	347,760	344,035	339,200	333,950	329,770	326,150	322,880	320,495	318,150	315,900	315,335	284,838	228,483
Aumsville	4,130	3,975	3,970	3,965	3,945	3,895	3,815	3,700	3,680	3,605	3,584	3,003	1,650
Aurora	985	985	980	970	950	950	935	930	920	920	918	655	567
Detroit	210	210	210	210	210	210	205	205	205	205	202	262	331
Donald	990	985	985	985	980	975	980	980	980	980	979	625	316
Gates (part)*	440	440	442	442	442	442	442	442	433	433	431	429	458
Gervais	2,615	2,585	2,570	2,565	2,555	2,530	2,520	2,520	2,520	2,510	2,464	2,009	992
Hubbard	3,305	3,305	3,300	3,225	3,225	3,220	3,200	3,185	3,180	3,175	3,173	2,483	1,881

County and Cities	July 1 Population Estimates										April 1 Census Population		
	2019	2018	2017	2016	2015	2014	2013	2012	2011	2010rev	2010	2000	1990
Idanha (part)*	90	78	78	78	78	78	78	78	78	78	77	147	177
Jefferson	3,265	3,245	3,235	3,195	3,165	3,165	3,150	3,140	3,135	3,115	3,098	2,487	1,805
Keizer	38,580	38,505	38,345	37,505	36,985	36,985	36,795	36,735	36,715	36,570	36,478	32,203	21,884
Mill City (part)*	310	305	305	301	299	326	326	327	326	324	324	312	308
Mt. Angel	3,465	3,415	3,400	3,375	3,410	3,395	3,310	3,285	3,285	3,285	3,286	3,121	2,778
St. Paul	435	435	435	430	425	425	420	420	420	420	421	354	322
Salem (part)*	140,480	138,825	137,225	136,059	135,148	134,027	133,015	131,977	131,300	130,788	130,398	119,040	94,990
Scotts Mills	380	375	370	365	365	365	365	365	360	355	357	312	283
Silverton	10,380	10,325	10,070	9,725	9,590	9,460	9,330	9,290	9,265	9,230	9,222	7,414	5,635
Stayton	7,870	7,810	7,770	7,745	7,725	7,700	7,685	7,660	7,660	7,645	7,644	6,816	5,011
Sublimity	2,970	2,890	2,755	2,755	2,755	2,760	2,745	2,680	2,680	2,680	2,681	2,148	1,491
Turner	2,215	2,085	2,005	1,945	1,920	1,900	1,865	1,865	1,860	1,855	1,854	1,199	1,281
Woodburn	25,135	24,760	24,685	24,795	24,670	24,455	24,330	24,090	24,090	24,085	24,080	20,100	13,404
Unincorporated	99,510	98,497	96,065	93,315	90,929	88,887	87,369	86,622	85,059	83,642	83,664	79,719	72,919
<b>MORROW</b>	<b>12,680</b>	<b>11,885</b>	<b>11,890</b>	<b>11,745</b>	<b>11,630</b>	<b>11,525</b>	<b>11,425</b>	<b>11,300</b>	<b>11,270</b>	<b>11,175</b>	<b>11,173</b>	<b>10,995</b>	<b>7,625</b>
Boardman	4,505	3,690	3,635	3,555	3,505	3,445	3,405	3,235	3,235	3,220	3,220	2,855	1,387
Heppner	1,295	1,295	1,295	1,295	1,295	1,290	1,290	1,290	1,290	1,290	1,291	1,395	1,412
lone	330	330	330	330	330	330	330	330	330	330	329	321	255
Irrigon	2,030	1,990	1,975	1,900	1,930	1,885	1,835	1,830	1,830	1,825	1,826	1,702	737
Lexington	265	265	255	255	255	255	255	240	240	240	238	263	286
Unincorporated	4,255	4,315	4,400	4,410	4,315	4,320	4,310	4,375	4,345	4,270	4,269	4,459	3,548
<b>MULTNOMAH</b>	<b>821,730</b>	<b>813,300</b>	<b>803,000</b>	<b>790,670</b>	<b>777,490</b>	<b>765,775</b>	<b>756,530</b>	<b>748,445</b>	<b>741,925</b>	<b>736,785</b>	<b>735,334</b>	<b>660,486</b>	<b>583,887</b>
Fairview	9,005	8,990	8,975	8,940	8,940	8,935	8,930	8,920	8,920	8,920	8,920	7,561	2,391
Gresham	111,810	110,505	109,820	108,150	107,065	106,455	106,180	105,970	105,795	105,595	105,594	90,205	68,249
Lake Oswego (part)*	2,560	2,560	2,561	2,561	2,561	2,558	2,554	2,554	2,551	2,544	2,544	2,274	2,253
Maywood Park	750	750	750	750	750	750	750	750	750	750	752	777	781
Portland (part)*	654,730	646,370	636,730	625,030	611,003	599,186	589,813	585,558	583,546	581,484	581,485	526,986	436,898
Troutdale	16,185	16,185	16,070	16,035	16,020	16,020	16,015	16,005	16,000	15,980	15,962	13,777	7,852
Wood Village	4,060	3,920	3,920	3,915	3,910	3,905	3,895	3,890	3,885	3,875	3,878	2,860	2,814
Unincorporated	22,630	24,020	24,174	25,290	27,241	27,966	28,393	24,798	20,478	17,637	16,199	16,046	62,649
<b>POLK</b>	<b>82,940</b>	<b>82,100</b>	<b>81,000</b>	<b>79,730</b>	<b>78,570</b>	<b>77,735</b>	<b>77,065</b>	<b>76,625</b>	<b>75,965</b>	<b>75,495</b>	<b>75,403</b>	<b>62,380</b>	<b>49,541</b>
Dallas	16,260	15,830	15,570	15,345	15,040	14,940	14,800	14,670	14,620	14,590	14,583	12,459	9,422
Falls City	980	955	950	950	950	950	950	945	945	945	947	966	818
Independence	9,530	9,370	9,340	9,250	8,775	8,605	8,585	8,585	8,600	8,600	8,590	6,035	4,425
Monmouth	9,920	9,890	9,855	9,745	9,640	9,620	9,720	9,755	9,720	9,545	9,534	7,741	6,288



County and Cities	July 1 Population Estimates										April 1 Census Population		
	2019	2018	2017	2016	2015	2014	2013	2012	2011	2010rev	2010	2000	1990
Salem (part)*	26,920	26,440	26,255	26,001	25,542	25,238	24,755	24,478	24,410	24,312	24,239	17,884	12,803
Willamina (part)*	890	885	870	869	848	848	847	845	845	845	845	716	554
Unincorporated	18,440	18,730	18,160	17,571	17,775	17,534	17,408	17,347	16,825	16,658	16,665	16,579	15,231
<b>SHERMAN</b>	1,770	1,785	1,800	1,795	1,790	1,785	1,780	1,765	1,765	1,765	1,765	1,934	1,918
Grass Valley	165	165	165	165	165	165	165	165	165	165	164	171	160
Moro	335	330	330	330	325	325	325	325	325	325	324	337	292
Rufus	280	280	280	280	280	280	255	255	250	250	249	268	295
Wasco	425	425	420	420	420	415	415	410	410	410	410	381	374
Unincorporated	565	585	605	600	600	600	620	610	615	615	618	777	797
<b>TILLAMOOK</b>	26,500	26,395	26,175	25,920	25,690	25,480	25,375	25,305	25,255	25,260	25,250	24,262	21,570
Bay City	1,350	1,350	1,340	1,330	1,320	1,320	1,310	1,305	1,295	1,290	1,286	1,149	1,027
Garibaldi	830	830	790	790	790	790	790	785	785	780	779	899	886
Manzanita	645	640	635	625	620	615	615	610	605	600	598	564	513
Nehalem	280	280	280	280	280	280	280	270	270	270	271	203	232
Rockaway Beach	1,365	1,350	1,350	1,335	1,335	1,325	1,325	1,320	1,320	1,315	1,312	1,267	970
Tillamook	4,935	4,920	4,930	4,920	4,900	4,880	4,885	4,880	4,905	4,920	4,935	4,352	4,006
Wheeler	400	400	405	405	405	405	415	415	415	415	414	391	335
Unincorporated	16,695	16,625	16,445	16,235	16,040	15,865	15,755	15,720	15,660	15,670	15,655	15,437	13,601
<b>UMATILLA</b>	81,160	80,765	80,500	79,880	79,155	78,340	77,895	77,120	76,580	76,000	75,889	70,548	59,249
Adams	375	375	375	370	370	370	370	365	365	365	350	297	223
Athena	1,170	1,170	1,175	1,170	1,140	1,125	1,125	1,125	1,125	1,125	1,126	1,221	997
Echo	710	710	705	705	705	705	700	705	700	700	699	650	500
Helix	195	195	195	195	195	195	190	190	185	185	184	183	150
Hermiston	18,415	18,200	17,985	17,730	17,520	17,345	17,240	16,995	16,865	16,795	16,745	13,154	10,047
Milton-Freewater	7,145	7,105	7,070	7,070	7,070	7,060	7,060	7,050	7,055	7,045	7,050	6,470	5,533
Pendleton	17,020	16,810	16,890	16,880	16,845	16,700	16,780	16,715	16,625	16,605	16,612	16,354	15,142
Pilot Rock	1,505	1,505	1,505	1,505	1,505	1,505	1,505	1,505	1,505	1,505	1,502	1,532	1,478
Stanfield	2,245	2,185	2,145	2,130	2,125	2,115	2,095	2,075	2,055	2,045	2,043	1,979	1,568
Ukiah	235	240	245	245	245	245	235	235	230	185	186	255	250
Umatilla	7,470	7,320	7,245	7,220	7,060	7,050	7,025	7,015	6,980	6,905	6,906	4,978	3,046
Weston	690	685	685	840	685	685	675	675	675	670	667	717	606
Unincorporated	23,985	24,265	24,280	23,820	23,690	23,240	22,895	22,470	22,215	21,870	21,819	22,758	19,709
<b>UNION</b>	26,840	26,885	26,900	26,745	26,625	26,485	26,325	26,175	25,980	25,810	25,748	24,530	23,598
Cove	550	550	550	550	550	550	550	550	550	550	552	594	507
Elgin	1,730	1,730	1,730	1,730	1,730	1,725	1,725	1,725	1,725	1,710	1,711	1,654	1,586

County and Cities	July 1 Population Estimates										April 1 Census Population		
	2019	2018	2017	2016	2015	2014	2013	2012	2011	2010rev	2010	2000	1990
Imbler	305	305	305	305	305	305	305	305	305	305	306	284	299
Island City	1,140	1,130	1,115	1,125	1,025	1,025	1,015	1,015	1,010	1,000	989	916	696
La Grande	13,290	13,340	13,245	13,200	13,165	13,150	13,125	13,110	13,095	13,095	13,082	12,327	11,766
North Powder	445	445	445	445	445	445	445	445	445	440	439	489	448
Summerville	135	135	135	135	135	135	135	135	135	135	135	117	142
Union	2,170	2,160	2,150	2,150	2,150	2,150	2,150	2,145	2,140	2,130	2,121	1,926	1,847
Unincorporated	7,075	7,090	7,225	7,105	7,120	7,000	6,875	6,745	6,575	6,445	6,413	6,223	6,307
<b>WALLOWA</b>	<b>7,150</b>	<b>7,175</b>	<b>7,195</b>	<b>7,140</b>	<b>7,100</b>	<b>7,070</b>	<b>7,045</b>	<b>7,015</b>	<b>6,995</b>	<b>7,005</b>	<b>7,008</b>	<b>7,226</b>	<b>6,911</b>
Enterprise	1,985	1,985	1,985	1,985	1,940	1,940	1,940	1,940	1,940	1,940	1,940	1,895	1,905
Joseph	1,120	1,120	1,120	1,100	1,095	1,095	1,095	1,090	1,090	1,085	1,081	1,054	1,073
Lostine	215	215	215	215	215	215	215	215	215	215	213	263	231
Wallowa	840	805	805	805	810	810	810	810	805	810	808	869	748
Unincorporated	2,990	3,050	3,070	3,035	3,040	3,010	2,985	2,960	2,945	2,955	2,966	3,145	2,954
<b>WASCO</b>	<b>27,240</b>	<b>27,200</b>	<b>27,100</b>	<b>26,700</b>	<b>26,370</b>	<b>26,105</b>	<b>25,810</b>	<b>25,485</b>	<b>25,300</b>	<b>25,235</b>	<b>25,213</b>	<b>23,791</b>	<b>21,683</b>
Antelope	50	50	50	50	50	50	45	45	45	45	46	59	34
Dufur	625	615	605	605	605	605	605	605	605	605	604	588	527
Maupin	430	430	425	425	425	425	425	425	420	420	418	411	456
Mosier	470	455	455	450	445	440	440	440	435	435	433	410	244
Shaniko	35	35	35	35	35	35	35	35	35	35	36	26	26
The Dalles	14,820	14,735	14,625	14,625	14,515	14,480	14,440	14,440	14,440	13,630	13,620	12,156	11,021
Unincorporated	10,810	10,880	10,905	10,510	10,295	10,070	9,820	9,495	9,320	10,065	10,056	10,141	9,375
<b>WASHINGTON</b>	<b>613,410</b>	<b>606,280</b>	<b>595,860</b>	<b>583,595</b>	<b>570,510</b>	<b>560,465</b>	<b>550,990</b>	<b>542,845</b>	<b>536,370</b>	<b>531,070</b>	<b>529,710</b>	<b>445,342</b>	<b>311,554</b>
Banks	1,865	1,785	1,775	1,775	1,775	1,775	1,775	1,775	1,775	1,775	1,777	1,286	563
Beaverton	98,255	97,000	95,685	95,385	94,215	93,395	91,935	91,205	90,835	89,925	89,803	76,129	53,307
Cornelius	12,225	11,935	11,915	11,915	11,900	11,910	11,915	11,915	11,915	11,875	11,869	9,652	6,148
Durham	1,885	1,880	1,880	1,880	1,880	1,880	1,880	1,365	1,360	1,355	1,351	1,382	748
Forest Grove	25,180	24,125	23,555	23,375	23,080	22,715	22,340	21,460	21,275	21,130	21,083	17,708	13,559
Gaston	655	655	650	640	640	640	640	640	640	635	637	600	563
Hillsboro	103,350	101,920	101,540	99,340	97,480	95,310	93,340	92,550	92,350	91,970	91,611	70,186	37,598
King City	4,190	3,700	3,630	3,530	3,425	3,365	3,320	3,225	3,135	3,115	3,111	1,949	2,060
Lake Oswego (part)*	10	10	9	9	9	9	9	9	9	9	9	15	6
North Plains	3,285	3,095	2,980	2,015	2,015	2,015	2,015	1,990	1,990	1,970	1,947	1,605	972
Portland (part)*	1,600	1,600	1,600	1,599	1,590	1,564	1,558	1,558	1,552	1,547	1,547	1,388	1,197
Rivergrove (part)*	35	35	36	36	37	34	34	34	31	32	32	37	27
Sherwood	19,595	19,505	19,350	19,145	19,080	18,955	18,575	18,265	18,255	18,205	18,194	11,791	3,093

County and Cities	July 1 Population Estimates										April 1 Census Population		
	2019	2018	2017	2016	2015	2014	2013	2012	2011	2010rev	2010	2000	1990
Tigard	53,450	52,785	50,985	49,745	49,280	49,140	49,135	48,695	48,415	48,090	48,035	41,223	29,435
Tualatin (part)*	24,070	24,130	24,049	23,929	23,726	24,022	23,606	23,215	23,251	23,191	23,192	20,127	13,258
Wilsonville (part)*	2,905	2,905	2,480	2,480	2,394	2,386	2,363	2,248	2,144	2,140	2,138	4	10
Unincorporated	260,855	259,215	253,741	246,797	237,984	231,350	226,551	222,696	217,438	214,106	213,374	190,260	149,010
<b>WHEELER</b>	1,440	1,450	1,480	1,465	1,445	1,440	1,430	1,425	1,435	1,440	1,441	1,547	1,396
Fossil	475	475	475	475	475	475	475	475	475	475	473	469	399
Mitchell	140	140	140	130	130	130	130	130	130	130	130	170	163
Spray	160	160	160	160	160	160	160	160	160	160	160	140	149
Unincorporated	665	675	705	700	680	675	665	660	670	675	678	768	685
<b>YAMHILL</b>	108,060	107,415	106,300	104,990	103,630	102,525	101,400	100,550	99,850	99,405	99,193	84,992	65,551
Amity	1,670	1,655	1,640	1,620	1,620	1,620	1,610	1,610	1,615	1,615	1,614	1,478	1,175
Carlton	2,270	2,270	2,205	2,190	2,125	2,070	2,065	2,035	2,035	2,015	2,007	1,514	1,289
Dayton	2,740	2,720	2,670	2,635	2,590	2,570	2,550	2,535	2,530	2,535	2,534	2,119	1,526
Dundee	3,235	3,230	3,225	3,190	3,185	3,180	3,170	3,175	3,175	3,170	3,162	2,598	1,663
Lafayette	4,125	4,105	4,095	3,975	3,905	3,825	3,755	3,735	3,740	3,740	3,742	2,586	1,292
McMinnville	33,930	33,810	33,665	33,405	33,080	32,705	32,510	32,435	32,270	32,240	32,187	26,499	17,894
Newberg	24,045	23,795	23,480	23,465	22,900	22,765	22,580	22,300	22,230	22,110	22,068	18,064	13,086
Sheridan	6,205	6,190	6,185	6,115	6,115	6,225	6,180	6,180	6,125	6,125	6,127	5,561	3,979
Willamina (part)*	1,360	1,275	1,240	1,226	1,197	1,197	1,183	1,180	1,180	1,180	1,180	1,128	1,194
Yamhill	1,105	1,090	1,075	1,070	1,070	1,050	1,030	1,020	1,020	1,020	1,024	794	867
Unincorporated	27,375	27,275	26,820	26,099	25,843	25,318	24,767	24,345	23,930	23,655	23,548	22,651	21,586

\*City is located and has population in more than one county.

\*\* The City of Damascus disincorporated on July 18, 2016.

Cities/towns that have conducted local enumerations following Census 2010 are: Adams and Bonanza in 2010; Rivergrove and Ukiah in 2011, Lexington in 2013, and Seneca in 2017.

Tualatin's 2015 population estimate includes a correction to account for double-counting in the 2014 estimate.

Please use caution when comparing the population estimates of the unincorporated county areas, and note that the population for an unincorporated area is a residual of the county total population and the sum of that county's city populations. The unincorporated area population is affected by those cities not submitting to PRC the completed annual form because the population of a city is held constant to the previous year if no recent form data are received. Additionally, cities sending incomplete data will affect the population residual in the unincorporated area. Annexations also affect unincorporated populations.

**Table 5. Population Estimates for Incorporated Cities Located in More than One County**

Prepared by Population Research Center, PSU, April 2020.

City by County	July 1 Population Estimate										April 1 Census	April 1 Census
	2019	2018	2017	2016	2015	2014	2013	2012	2011	2010rev	2010	2000
<b>Albany</b>	<b>54,120</b>	<b>53,145</b>	<b>52,710</b>	<b>52,540</b>	<b>51,670</b>	<b>51,270</b>	<b>50,720</b>	<b>50,710</b>	<b>50,520</b>	<b>50,325</b>	<b>50,158</b>	<b>40,852</b>
in Benton	8,255	7,945	7,720	7,647	7,267	7,146	6,912	6,764	6,698	6,587	6,463	5,104
in Linn	45,865	45,200	44,990	44,893	44,403	44,124	43,808	43,946	43,822	43,738	43,695	35,748
<b>Gates</b>	<b>485</b>	<b>485</b>	<b>485</b>	<b>485</b>	<b>485</b>	<b>485</b>	<b>485</b>	<b>485</b>	<b>475</b>	<b>475</b>	<b>471</b>	<b>471</b>
in Linn	45	45	43	43	43	43	43	43	42	42	40	42
in Marion	440	440	442	442	442	442	442	442	433	433	431	429
<b>Idanha</b>	<b>155</b>	<b>140</b>	<b>140</b>	<b>140</b>	<b>140</b>	<b>140</b>	<b>135</b>	<b>135</b>	<b>135</b>	<b>135</b>	<b>134</b>	<b>232</b>
in Linn	65	62	62	62	62	62	57	57	57	57	57	85
in Marion	90	78	78	78	78	78	78	78	78	78	77	147
<b>Lake Oswego</b>	<b>39,115</b>	<b>38,215</b>	<b>37,490</b>	<b>37,425</b>	<b>37,300</b>	<b>37,105</b>	<b>36,990</b>	<b>36,770</b>	<b>36,725</b>	<b>36,620</b>	<b>36,619</b>	<b>35,278</b>
in Clackamas	36,545	35,645	34,920	34,855	34,730	34,538	34,427	34,206	34,165	34,067	34,066	32,989
in Multnomah	2,560	2,560	2,561	2,561	2,561	2,558	2,554	2,554	2,551	2,544	2,544	2,274
in Washington	10	10	9	9	9	9	9	9	9	9	9	15
<b>Mill City</b>	<b>1,880</b>	<b>1,865</b>	<b>1,860</b>	<b>1,860</b>	<b>1,855</b>	<b>1,875</b>	<b>1,870</b>	<b>1,870</b>	<b>1,865</b>	<b>1,855</b>	<b>1,855</b>	<b>1,537</b>
in Linn	1,570	1,560	1,555	1,559	1,556	1,549	1,544	1,543	1,539	1,531	1,531	1,225
in Marion	310	305	305	301	299	326	326	327	326	324	324	312
<b>Portland</b>	<b>657,100</b>	<b>648,740</b>	<b>639,100</b>	<b>627,395</b>	<b>613,355</b>	<b>601,510</b>	<b>592,120</b>	<b>587,865</b>	<b>585,845</b>	<b>583,775</b>	<b>583,776</b>	<b>529,121</b>
in Clackamas	770	770	770	766	762	760	749	749	747	744	744	747
in Multnomah	654,730	646,370	636,730	625,030	611,003	599,186	589,813	585,558	583,546	581,484	581,485	526,986
in Washington	1,600	1,600	1,600	1,599	1,590	1,564	1,558	1,558	1,552	1,547	1,547	1,388
<b>Rivergrove</b>	<b>505</b>	<b>505</b>	<b>500</b>	<b>495</b>	<b>495</b>	<b>485</b>	<b>445</b>	<b>420</b>	<b>375</b>	<b>290</b>	<b>289</b>	<b>324</b>
in Clackamas	470	470	464	459	458	451	411	386	344	258	257	287
in Washington	35	35	36	36	37	34	34	34	31	32	32	37

**Table 5. Population Estimates for Incorporated Cities Located in More than One County**

Prepared by Population Research Center, PSU, April 2020.

City by County	July 1 Population Estimate										April 1 Census 2010	April 1 Census 2000
	2019	2018	2017	2016	2015	2014	2013	2012	2011	2010rev		
<b>Salem</b>	<b>167,400</b>	<b>165,265</b>	<b>163,480</b>	<b>162,060</b>	<b>160,690</b>	<b>159,265</b>	<b>157,770</b>	<b>156,455</b>	<b>155,710</b>	<b>155,100</b>	<b>154,637</b>	<b>136,924</b>
in Marion	140,480	138,825	137,225	136,059	135,148	134,027	133,015	131,989	131,300	130,788	130,398	119,040
in Polk	26,920	26,440	26,255	26,001	25,542	25,238	24,755	24,466	24,410	24,312	24,239	17,884
<b>Tualatin</b>	<b>27,135</b>	<b>27,055</b>	<b>26,960</b>	<b>26,840</b>	<b>26,590</b>	<b>26,925</b>	<b>26,510</b>	<b>26,120</b>	<b>26,120</b>	<b>26,060</b>	<b>26,054</b>	<b>22,791</b>
in Clackamas	3,065	2,925	2,911	2,911	2,905	2,903	2,904	2,905	2,869	2,869	2,862	2,664
in Washington	24,070	24,130	24,049	23,929	23,685	24,022	23,606	23,215	23,251	23,191	23,192	20,127
<b>Willamina</b>	<b>2,250</b>	<b>2,160</b>	<b>2,110</b>	<b>2,095</b>	<b>2,045</b>	<b>2,045</b>	<b>2,030</b>	<b>2,025</b>	<b>2,025</b>	<b>2,025</b>	<b>2,025</b>	<b>1,844</b>
in Polk	890	885	870	869	848	848	847	845	845	845	845	716
in Yamhill	1,360	1,275	1,240	1,226	1,197	1,197	1,183	1,180	1,180	1,180	1,180	1,128
<b>Wilsonville</b>	<b>25,635</b>	<b>25,250</b>	<b>24,315</b>	<b>23,740</b>	<b>22,870</b>	<b>21,980</b>	<b>21,550</b>	<b>20,515</b>	<b>19,565</b>	<b>19,525</b>	<b>19,509</b>	<b>13,991</b>
in Clackamas	22,730	22,345	21,835	21,260	20,476	19,594	19,187	18,267	17,421	17,385	17,371	13,987
in Washington	2,905	2,905	2,480	2,480	2,394	2,386	2,363	2,248	2,144	2,140	2,138	4

**Table 6. Rank of Incorporated Cities by July 1, 2019 Population Size**

Prepared by Population Research Center, PSU, April 2020.

City	City	City	City	City	City	City	City		
Portland	657,100	1 Monmouth	9,920	Burns	2,835	Port Orford	1,150	Sodaville	345
Eugene	171,210	Molalla	9,885	Dayton	2,740	Island City	1,140	Moro	335
Salem	167,400	Astoria	9,690	Gervais	2,615	Joseph	1,120	Ione	330
Gresham	111,810	Independence	9,530	Millersburg	2,615	Yamhill	1,105	Imbler	305
Hillsboro	103,350	Sweet Home	9,340	Myrtle Point	2,535	Lowell	1,090	Paisley	305
Beaverton	98,255	Eagle Point	9,260	Lakeview	2,300	Yoncalla	1,070	Halfway	295
Bend	91,385	Fairview	9,005	Gold Beach	2,290	Donald	990	Nehalem	280
Medford	81,465	Florence	8,850	Carlton	2,270	Aurora	985	Rufus	280
Springfield	61,355	Lincoln City	8,795	Willamina	2,250	Falls City	980	Lexington	265
Corvallis	58,885	Hood River	8,305	Stanfield	2,245	Oakland	965	Westfir	265
Albany	54,120	Sutherlin	8,235	Rogue River	2,235	Halsey	940	Ukiah	235
Tigard	53,450	Stayton	7,870	Turner	2,215	Scio	930	Waterloo	235
Lake Oswego	39,115	Umatilla	7,470	Union	2,170	Prairie City	915	Elkton	215
Keizer	38,580	Scappoose	7,270	Waldport	2,110	Adair Village	900	Lostine	215
Grants Pass	37,485	Milton-Freewater	7,145	Vernonia	2,095	Glendale	860	Detroit	210
Oregon City	35,570	Brookings	6,645	Irrigon	2,030	Merrill	845	Sumpter	205
McMinnville	33,930	Seaside	6,585	Columbia City	1,985	Wallowa	840	Seneca	200
Redmond	30,600	Talent	6,465	Enterprise	1,985	Garibaldi	830	Helix	195
Tualatin	27,135	Madras	6,380	Canyonville	1,975	Metolius	825	Long Creek	195
West Linn	25,905	Sheridan	6,205	Cave Junction	1,975	Malin	820	Adrian	185
Wilsonville	25,635	Junction City	6,170	Rainier	1,940	Yachats	760	Jordan Valley	175
Forest Grove	25,180	Winston	5,550	La Pine	1,900	Maywood Park	750	Richland	175
Woodburn	25,135	Creswell	5,510	Durham	1,885	Chiloquin	740	Grass Valley	165
Roseburg	24,890	Warrenton	5,320	Mill City	1,880	Echo	710	Spray	160
Newberg	24,045	Tillamook	4,935	Vale	1,875	Canyon City	705	Dayville	155
Klamath Falls	22,000	Philomath	4,900	Banks	1,865	Powers	695	Idanha	155
Happy Valley	21,700	Veneta	4,800	Clatskanie	1,775	Condon	690	Mitchell	140
Ashland	20,960	Phoenix	4,650	Lakeside	1,750	Weston	690	Barlow	135
Milwaukie	20,535	Boardman	4,505	John Day	1,735	Gaston	655	Summerville	135
Sherwood	19,595	Reedsport	4,215	Cannon Beach	1,730	Manzanita	645	Monument	130
Hermiston	18,415	King City	4,190	Elgin	1,730	Monroe	640	Unity	75
Central Point	18,365	Aumsville	4,130	Brownsville	1,720	Dufur	625	Prescott	55
Lebanon	17,135	Lafayette	4,125	Amity	1,670	Arlington	615	Antelope	50
Pendleton	17,020	Wood Village	4,060	Hines	1,565	Johnson City	565	Granite	40
Canby	16,950	Coquille	3,920	Culver	1,560	Cove	550	Shaniko	35
Coos Bay	16,700	Estacada	3,725	Gearhart	1,525	Mt. Vernon	525	Lonerock	20
Dallas	16,260	Harrisburg	3,680	Pilot Rock	1,505	Rivergrove	505	Greenhorn	2
Troutdale	16,185	Myrtle Creek	3,490	Depoe Bay	1,445	Gates	485		
The Dalles	14,820	Toledo	3,490	Cascade Locks	1,375	Fossil	475		
St. Helens	13,410	Mt. Angel	3,465	Rockaway Beach	1,365	Mosier	470		
La Grande	13,290	Nyssa	3,320	Bay City	1,350	Butte Falls	460		
Cornelius	12,225	Hubbard	3,305	Dunes City	1,345	Bonanza	455		
Gladstone	11,905	Oakridge	3,305	Coburg	1,295	Huntington	445		
Ontario	11,485	North Plains	3,285	Heppner	1,295	North Powder	445		
Sandy	11,075	Jefferson	3,265	Tangent	1,260	St. Paul	435		
Silverton	10,380	Dundee	3,235	Siletz	1,235	Maupin	430		
Newport	10,285	Bandon	3,220	Gold Hill	1,220	Wasco	425		
Prineville	10,220	Shady Cove	3,145	Lyons	1,200	Haines	415		
Cottage Grove	10,140	Jacksonville	3,015	Riddle	1,190	Wheeler	400		
Baker City	9,965	Sisters	2,985	Athena	1,170	Scotts Mills	380		
North Bend	9,925	Sublimity	2,970	Drain	1,165	Adams	375		

**Table 7. Alphabetical Listing of Incorporated Cities with Population for July 1, 2019, Census 2010 Population and Change since Census 2010.**

Prepared by Population Research Center, PSU, April 2020.

City	Estimate	Census	Change	Percent	City	Estimate	Census	Change	Percent
	July 1, 2019	April 1, 2010		2010-2019		Change	July 1, 2019		April 1, 2010
Adair Village	900	840	60	7.1%	Enterprise	1,985	1,940	45	2.3%
Adams*	375	350	25	7.1%	Estacada	3,725	2,695	1,030	38.2%
Adrian	185	177	8	4.5%	Eugene	171,210	156,185	15,025	9.6%
Albany	54,120	50,158	3,962	7.9%	Fairview	9,005	8,920	85	1.0%
Amity	1,670	1,614	56	3.5%	Falls City	980	947	33	3.5%
Antelope	50	46	4	8.7%	Florence	8,850	8,466	384	4.5%
Arlington	615	586	29	4.9%	Forest Grove	25,180	21,083	4,097	19.4%
Ashland	20,960	20,078	882	4.4%	Fossil	475	473	2	0.4%
Astoria	9,690	9,477	213	2.2%	Garibaldi	830	779	51	6.5%
Athena	1,170	1,126	44	3.9%	Gaston	655	637	18	2.8%
Aumsville	4,130	3,584	546	15.2%	Gates	485	471	14	3.0%
Aurora	985	918	67	7.3%	Gearhart	1,525	1,462	63	4.3%
Baker City	9,965	9,828	137	1.4%	Gervais	2,615	2,464	151	6.1%
Bandon	3,220	3,066	154	5.0%	Gladstone	11,905	11,497	408	3.5%
Banks	1,865	1,777	88	5.0%	Glendale	860	874	-14	-1.6%
Barlow	135	135	0	0.0%	Gold Beach	2,290	2,253	37	1.6%
Bay City	1,350	1,286	64	5.0%	Gold Hill	1,220	1,220	0	0.0%
Beaverton	98,255	89,803	8,452	9.4%	Granite	40	38	2	5.3%
Bend	91,385	76,639	14,746	19.2%	Grants Pass	37,485	34,533	2,952	8.5%
Boardman	4,505	3,220	1,285	39.9%	Grass Valley	165	164	1	0.6%
Bonanza*	455	415	40	9.6%	Greenhorn	2	0	2	-
Brookings	6,645	6,336	309	4.9%	Gresham	111,810	105,594	6,216	5.9%
Brownsville	1,720	1,668	52	3.1%	Haines	415	416	-1	-0.2%
Burns	2,835	2,806	29	1.0%	Halfway	295	288	7	2.4%
Butte Falls	460	423	37	8.7%	Halsey	940	904	36	4.0%
Canby	16,950	15,829	1,121	7.1%	Happy Valley	21,700	13,903	7,797	56.1%
Cannon Beach	1,730	1,690	40	2.4%	Harrisburg	3,680	3,567	113	3.2%
Canyon City	705	703	2	0.3%	Helix	195	184	11	6.0%
Canyonville	1,975	1,884	91	4.8%	Heppner	1,295	1,291	4	0.3%
Carlton	2,270	2,007	263	13.1%	Hermiston	18,415	16,745	1,670	10.0%
Cascade Locks	1,375	1,144	231	20.2%	Hillsboro	103,350	91,611	11,739	12.8%
Cave Junction	1,975	1,883	92	4.9%	Hines	1,565	1,563	2	0.1%
Central Point	18,365	17,169	1,196	7.0%	Hood River	8,305	7,167	1,138	15.9%
Chiloquin	740	734	6	0.8%	Hubbard	3,305	3,173	132	4.2%
Clatskanie	1,775	1,737	38	2.2%	Huntington	445	440	5	1.1%
Coburg	1,295	1,035	260	25.1%	Idanha	155	134	21	15.7%
Columbia City	1,985	1,946	39	2.0%	Imbler	305	306	-1	-0.3%
Condon	690	682	8	1.2%	Independence	9,530	8,590	940	10.9%
Coos Bay	16,700	15,967	733	4.6%	Ione	330	329	1	0.3%
Coquille	3,920	3,866	54	1.4%	Irrigon	2,030	1,826	204	11.2%
Cornelius	12,225	11,869	356	3.0%	Island City	1,140	989	151	15.3%
Corvallis	58,885	54,462	4,423	8.1%	Jacksonville	3,015	2,785	230	8.3%
Cottage Grove	10,140	9,686	454	4.7%	Jefferson	3,265	3,098	167	5.4%
Cove	550	552	-2	-0.4%	John Day	1,735	1,744	-9	-0.5%
Creswell	5,510	5,031	479	9.5%	Johnson City	565	566	-1	-0.2%
Culver	1,560	1,357	203	15.0%	Jordan Valley	175	181	-6	-3.3%
Dallas	16,260	14,583	1,677	11.5%	Joseph	1,120	1,081	39	3.6%
Damascus**	-	10,539	-	-	Junction City	6,170	5,392	778	14.4%
Dayton	2,740	2,534	206	8.1%	Keizer	38,580	36,478	2,102	5.8%
Dayville	155	149	6	4.0%	King City	4,190	3,111	1,079	34.7%
Depoe Bay	1,445	1,398	47	3.4%	Klamath Falls	22,000	20,840	1,160	5.6%
Detroit	210	202	8	4.0%	La Grande	13,290	13,082	208	1.6%
Donald	990	979	11	1.1%	La Pine	1,900	1,653	247	14.9%
Drain	1,165	1,151	14	1.2%	Lafayette	4,125	3,742	383	10.2%
Dufur	625	604	21	3.5%	Lake Oswego	39,115	36,619	2,496	6.8%
Dundee	3,235	3,162	73	2.3%	Lakeside	1,750	1,699	51	3.0%
Dunes City	1,345	1,303	42	3.2%	Lakeview	2,300	2,294	6	0.3%
Durham	1,885	1,351	534	39.5%	Lebanon	17,135	15,518	1,617	10.4%
Eagle Point	9,260	8,469	791	9.3%	Lexington*	265	238	27	11.3%
Echo	710	699	11	1.6%	Lincoln City	8,795	7,930	865	10.9%
Elgin	1,730	1,711	19	1.1%	Lonerock	20	21	-1	-4.8%
Elkton	215	195	20	10.3%	Long Creek	195	197	-2	-1.0%

**Table 7. Alphabetical Listing of Incorporated Cities with Population for July 1, 2019, Census 2010 Population and Change since Census 2010.**

Prepared by Population Research Center, PSU, April 2020.

City	Estimate	Census	Change	Percent	City	Estimate	Census	Change	Percent
	July 1, 2019	April 1, 2010		2010-2019		Change	July 1, 2019		April 1, 2010
Lostine	215	213	2	0.9%	Sandy	11,075	9,570	1,505	15.7%
Lowell	1,090	1,045	45	4.3%	Scappoose	7,270	6,592	678	10.3%
Lyons	1,200	1,161	39	3.4%	Scio	930	838	92	11.0%
Madras	6,380	6,046	334	5.5%	Scotts Mills	380	357	23	6.4%
Malin	820	805	15	1.9%	Seaside	6,585	6,457	128	2.0%
Manzanita	645	598	47	7.9%	Seneca*	200	199	1	0.5%
Maupin	430	418	12	2.9%	Shady Cove	3,145	2,904	241	8.3%
Maywood Park	750	752	-2	-0.3%	Shaniko	35	36	-1	-2.8%
McMinnville	33,930	32,187	1,743	5.4%	Sheridan	6,205	6,127	78	1.3%
Medford	81,465	74,907	6,558	8.8%	Sherwood	19,595	18,194	1,401	7.7%
Merrill	845	844	1	0.1%	Siletz	1,235	1,212	23	1.9%
Metolius	825	710	115	16.2%	Silverton	10,380	9,222	1,158	12.6%
Mill City	1,880	1,855	25	1.3%	Sisters	2,985	2,038	947	46.5%
Millersburg	2,615	1,329	1,286	96.8%	Sodaville	345	308	37	12.0%
Milton-Freewater	7,145	7,050	95	1.3%	Spray	160	160	0	0.0%
Milwaukie	20,535	20,291	244	1.2%	Springfield	61,355	59,403	1,952	3.3%
Mitchell	140	130	10	7.7%	St. Helens	13,410	12,883	527	4.1%
Molalla	9,885	8,108	1,777	21.9%	St. Paul	435	421	14	3.3%
Monmouth	9,920	9,534	386	4.0%	Stanfield	2,245	2,043	202	9.9%
Monroe	640	617	23	3.7%	Stayton	7,870	7,644	226	3.0%
Monument	130	128	2	1.6%	Sublimity	2,970	2,681	289	10.8%
Moro	335	324	11	3.4%	Summerville	135	135	0	0.0%
Mosier	470	433	37	8.5%	Sumpter	205	204	1	0.5%
Mt. Angel	3,465	3,286	179	5.4%	Sutherlin	8,235	7,810	425	5.4%
Mt. Vernon	525	527	-2	-0.4%	Sweet Home	9,340	8,925	415	4.6%
Myrtle Creek	3,490	3,439	51	1.5%	Talent	6,465	6,066	399	6.6%
Myrtle Point	2,535	2,514	21	0.8%	Tangent	1,260	1,164	96	8.2%
Nehalem	280	271	9	3.3%	The Dalles	14,820	13,620	1,200	8.8%
Newberg	24,045	22,068	1,977	9.0%	Tigard	53,450	48,035	5,415	11.3%
Newport	10,285	9,989	296	3.0%	Tillamook	4,935	4,935	0	0.0%
North Bend	9,925	9,695	230	2.4%	Toledo	3,490	3,465	25	0.7%
North Plains	3,285	1,947	1,338	68.7%	Troutdale	16,185	15,962	223	1.4%
North Powder	445	439	6	1.4%	Tualatin	27,135	26,054	1,081	4.1%
Nyssa	3,320	3,267	53	1.6%	Turner	2,215	1,854	361	19.5%
Oakland	965	927	38	4.1%	Ukiah*	235	186	49	26.3%
Oakridge	3,305	3,205	100	3.1%	Umatilla	7,470	6,906	564	8.2%
Ontario	11,485	11,366	119	1.0%	Union	2,170	2,121	49	2.3%
Oregon City	35,570	31,859	3,711	11.6%	Unity	75	71	4	5.6%
Paisley	305	243	62	25.5%	Vale	1,875	1,874	1	0.1%
Pendleton	17,020	16,612	408	2.5%	Veneta	4,800	4,561	239	5.2%
Philomath	4,900	4,584	316	6.9%	Vernonia	2,095	2,151	-56	-2.6%
Phoenix	4,650	4,538	112	2.5%	Waldport	2,110	2,033	77	3.8%
Pilot Rock	1,505	1,502	3	0.2%	Wallowa	840	808	32	4.0%
Port Orford	1,150	1,133	17	1.5%	Warrenton	5,320	4,989	331	6.6%
Portland	657,100	583,776	73,324	12.6%	Wasco	425	410	15	3.7%
Powers	695	689	6	0.9%	Waterloo	235	229	6	2.6%
Prairie City	915	909	6	0.7%	West Linn	25,905	25,109	796	3.2%
Prescott	55	55	0	0.0%	Westfir	265	253	12	4.7%
Prineville	10,220	9,253	967	10.5%	Weston	690	667	23	3.4%
Rainier	1,940	1,895	45	2.4%	Wheeler	400	414	-14	-3.4%
Redmond	30,600	26,215	4,385	16.7%	Willamina	2,250	2,025	225	11.1%
Reedsport	4,215	4,154	61	1.5%	Wilsonville	25,635	19,509	6,126	31.4%
Richland	175	156	19	12.2%	Winston	5,550	5,379	171	3.2%
Riddle	1,190	1,185	5	0.4%	Wood Village	4,060	3,878	182	4.7%
Rivergrove*	505	289	216	74.7%	Woodburn	25,135	24,080	1,055	4.4%
Rockaway Beach	1,365	1,312	53	4.0%	Yachats	760	690	70	10.1%
Rogue River	2,235	2,131	104	4.9%	Yamhill	1,105	1,024	81	7.9%
Roseburg	24,890	21,181	3,709	17.5%	Yoncalla	1,070	1,047	23	2.2%
Rufus	280	249	31	12.4%					
Salem	167,400	154,637	12,763	8.3%					

\*Conducted a local enumeration after Census 2010.

\*\*The City of Damascus disincorporated on July 18, 2016.



**Table 8. Population Added to Incorporated Cities Due to Annexations: April 1, 2010 - July 1, 2019**

Compiled by Population Research Center, PSU. April 2020.

Adair Village	0	Depoe Bay	0	Independence	1	Myrtle Creek	0	Springfield	33
Adams	0	Detroit	0	Ione	0	Myrtle Point	0	St. Helens	7
Adrian	0	Donald	3	Irrigon	0	Nehalem	0	St. Paul	0
Albany	4	Drain	1	Island City	0	Newberg	10	Stanfield	2
Amity	0	Dufur	0	Jacksonville	0	Newport	2	Stayton	2
Antelope	0	Dundee	0	Jefferson	3	North Bend	0	Sublimity	0
Arlington	0	Dunes City	0	John Day	6	North Plains	1	Summerville	0
Ashland	0	Durham	0	Johnson City	0	North Powder	0	Sumpter	0
Astoria	0	Eagle Point	0	Jordan Valley	0	Nyssa	0	Sutherlin	79
Athena	0	Echo	0	Joseph	0	Oakland	0	Sweet Home	4
Aumsville	4	Elgin	0	Junction City	0	Oakridge	0	Talent	0
Aurora	0	Elkton	0	Keizer	4	Ontario	45	Tangent	9
Baker City	0	Enterprise	0	King City	469	Oregon City	10	The Dalles	811
Bandon	0	Estacada	3	Klamath Falls	2	Paisley	0	Tigard	64
Banks	2	Eugene	15	La Grande	13	Pendleton	11	Tillamook	27
Barlow	0	Fairview	0	La Pine	0	Philomath	26	Toledo	0
Bay City	0	Falls City	0	Lafayette	0	Phoenix	0	Troutdale	2
Beaverton	382	Florence	3	Lake Oswego	71	Pilot Rock	0	Tualatin	2
Bend	0	Forest Grove	262	Lakeside	0	Port Orford	0	Turner	0
Boardman	0	Fossil	0	Lakeview	1	Portland	2	Ukiah	0
Bonanza	0	Garibaldi	0	Lebanon	2	Powers	0	Umatilla	0
Brookings	0	Gaston	0	Lexington	0	Prairie City	0	Union	0
Brownsville	0	Gates	0	Lincoln City	361	Prescott	0	Unity	0
Burns	0	Gearhart	0	Lonerock	0	Prineville	4	Vale	0
Butte Falls	0	Gervais	0	Long Creek	0	Rainier	0	Veneta	0
Canby	53	Gladstone	0	Lostine	0	Redmond	2	Vernonia	0
Cannon Beach	0	Glendale	0	Lowell	0	Reedsport	0	Waldport	0
Canyon City	0	Gold Beach	0	Lyons	0	Richland	7	Wallowa	0
Canyonville	0	Gold Hill	0	Madras	161	Riddle	0	Warrenton	0
Carlton	0	Granite	0	Malin	10	Rivergrove	0	Wasco	0
Cascade Locks	0	Grants Pass	1,342	Manzanita	0	Rockaway Beach	0	Waterloo	0
Cave Junction	6	Granite	0	Maupin	0	Rogue River	0	West Linn	12
Central Point	9	Grass Valley	0	Maywood Park	0	Roseburg	2,485	Westfir	0
Chiloquin	0	Greenhorn	0	McMinnville	0	Rufus	0	Weston	0
Clatskanie	0	Gresham	7	Medford	6	Salem	185	Wheeler	0
Coburg	0	Haines	0	Merrill	0	Sandy	14	Willamina	0
Columbia City	3	Halfway	0	Metolius	0	Scappoose	9	Wilsonville	12
Condon	0	Halsey	0	Mill City	3	Scio	0	Winston	4
Coos Bay	0	Happy Valley	404	Millersburg	0	Scotts Mills	0	Wood Village	0
Coquille	0	Harrisburg	0	Milton-Freewater	0	Seaside	0	Woodburn	20
Cornelius	0	Helix	0	Milwaukie	218	Seneca	0	Yachats	0
Corvallis	4	Heppner	0	Mitchell	0	Shady Cove	0	Yamhill	0
Cottage Grove	3	Hermiston	24	Molalla	0	Shaniko	0	Yoncalla	0
Cove	0	Hillsboro	280	Monmouth	0	Sheridan	0		
Creswell	7	Hines	0	Monroe	0	Sherwood	13		
Culver	0	Hood River	125	Monument	0	Siletz	0		
Dallas	23	Hubbard	0	Moro	0	Silverton	6		
Damascus	0	Huntington	0	Mosier	0	Sisters	0		
Dayton	0	Idanha	0	Mt. Angel	2	Sodaville	0		
Dayville	0	Imbler	0	Mt. Vernon	0	Spray	0		

**Table 9. Population by Age and Sex for Oregon and Its Counties: July 1, 2019**

Prepared by Population Research Center, PSU, April 2020.

Age Group	Total Population																			Total
	0-4	5-9	10-14	15-17	18-19	20-24	25-29	30-34	35-39	40-44	45-49	50-54	55-59	60-64	65-69	70-74	75-79	80-84	85+	
<b>OREGON</b>	<b>245,314</b>	<b>234,642</b>	<b>242,797</b>	<b>143,302</b>	<b>110,656</b>	<b>266,770</b>	<b>288,508</b>	<b>288,573</b>	<b>290,283</b>	<b>277,993</b>	<b>265,377</b>	<b>261,735</b>	<b>273,315</b>	<b>281,594</b>	<b>257,806</b>	<b>206,440</b>	<b>133,655</b>	<b>81,974</b>	<b>85,666</b>	<b>4,236,400</b>
BAKER	920	735	885	565	283	535	721	901	991	859	871	1,004	1,288	1,545	1,548	1,264	876	565	463	<b>16,820</b>
BENTON	3,450	3,783	4,277	2,838	6,194	14,141	7,162	5,718	4,949	4,596	4,648	4,816	5,332	5,866	5,654	4,417	2,845	1,698	1,977	<b>94,360</b>
CLACKAMAS	21,729	24,037	25,966	16,122	9,607	21,635	24,101	25,036	27,333	28,402	28,668	29,130	31,060	30,553	26,176	21,568	14,182	8,390	9,725	<b>423,420</b>
CLATSOP	2,230	1,940	2,111	1,255	985	2,039	1,941	2,426	2,532	2,284	2,268	2,313	2,903	3,229	3,393	2,351	1,462	862	805	<b>39,330</b>
COLUMBIA	2,662	2,787	3,311	1,874	1,172	2,318	2,512	3,426	3,291	3,650	3,417	3,876	4,000	4,259	3,593	2,822	1,898	951	931	<b>52,750</b>
COOS	3,570	2,921	3,270	1,876	1,464	2,543	2,902	3,707	3,550	3,326	3,310	3,659	4,670	5,525	5,508	4,673	3,134	2,020	1,662	<b>63,290</b>
CROOK	1,027	1,098	1,224	725	412	920	942	1,135	1,142	1,363	1,441	1,489	1,878	2,201	2,122	1,779	1,224	701	617	<b>23,440</b>
CURRY	819	726	945	558	325	653	865	971	1,177	991	1,175	1,344	1,931	2,594	2,638	2,279	1,382	854	774	<b>23,000</b>
DESCHUTES	11,534	11,334	11,885	6,741	4,087	9,283	11,323	12,413	13,608	13,206	12,571	12,093	12,441	13,806	12,826	10,110	6,239	3,800	3,698	<b>193,000</b>
DOUGLAS	5,608	5,148	5,938	3,656	2,375	4,882	5,130	6,154	6,031	6,117	6,104	6,747	8,173	9,630	9,568	8,217	5,530	3,593	3,649	<b>112,250</b>
GILLIAM	114	61	104	56	20	49	65	99	85	111	108	125	182	218	210	141	92	64	84	<b>1,990</b>
GRANT	282	255	341	189	105	224	243	365	364	341	386	406	593	720	796	650	502	299	300	<b>7,360</b>
HARNEY	380	360	413	278	150	248	381	421	392	395	388	414	569	676	654	482	355	204	201	<b>7,360</b>
HOOD RIVER	1,489	1,661	1,683	1,014	615	1,326	1,530	1,557	1,627	1,833	1,747	1,835	1,835	1,719	1,461	934	672	407	534	<b>25,480</b>
JACKSON	12,694	11,086	12,799	7,180	5,151	11,878	12,299	13,055	13,457	13,263	12,826	13,417	15,019	16,492	16,056	13,771	9,130	5,670	6,050	<b>221,290</b>
JEFFERSON	1,521	1,213	1,528	824	537	1,141	1,388	1,419	1,365	1,359	1,513	1,605	1,862	1,833	1,676	1,336	833	527	360	<b>23,840</b>
JOSEPHINE	4,276	3,960	4,731	2,780	1,729	3,588	3,980	4,847	4,558	4,564	4,715	5,186	6,173	7,546	7,228	6,699	4,436	2,836	2,917	<b>86,750</b>
KLAMATH	3,781	3,402	3,903	2,207	1,745	3,791	3,751	4,035	3,830	3,841	4,063	4,192	4,884	5,208	5,334	4,263	2,855	1,638	1,465	<b>68,190</b>
LAKE	341	286	386	250	98	240	331	505	445	575	526	573	625	771	754	554	416	217	187	<b>8,080</b>
LANE	17,486	17,202	18,957	11,833	13,639	32,721	26,532	24,206	22,133	22,692	21,557	22,297	24,313	26,176	25,726	21,055	13,253	8,361	8,742	<b>378,880</b>
LINCOLN	2,440	1,841	2,164	1,205	861	1,650	2,010	2,607	2,707	2,489	2,504	2,902	3,817	4,879	5,202	4,065	2,336	1,396	1,184	<b>48,260</b>
LINN	7,992	7,567	8,008	4,520	3,178	7,075	7,523	8,111	8,295	7,482	7,682	7,590	8,585	8,618	8,086	6,561	4,411	2,746	2,520	<b>126,550</b>
MALHEUR	2,255	1,986	2,062	1,165	942	2,023	2,062	1,985	2,101	1,970	1,830	1,862	1,893	1,970	1,862	1,514	1,108	676	767	<b>32,030</b>
MARION	24,693	23,845	23,180	13,945	10,334	23,673	23,863	22,739	22,198	21,306	20,340	20,197	20,791	20,685	18,450	14,939	9,740	6,280	6,563	<b>347,760</b>
MORROW	762	871	890	551	334	720	747	685	791	773	808	771	814	989	765	618	379	224	188	<b>12,680</b>
MULTNOMAH	47,858	41,587	40,546	22,567	19,239	56,709	74,507	73,669	71,954	64,208	56,458	51,119	47,364	44,970	39,606	29,323	17,820	10,516	11,711	<b>821,730</b>
POLK	5,408	5,156	5,633	3,137	3,052	6,253	4,943	4,740	5,292	4,985	4,638	4,709	4,773	5,029	4,978	4,137	2,813	1,708	1,558	<b>82,940</b>
SHERMAN	106	72	96	51	28	48	63	111	120	89	101	95	127	184	127	137	102	56	56	<b>1,770</b>
TILLAMOOK	1,605	1,243	1,494	804	517	965	1,161	1,359	1,516	1,440	1,424	1,645	2,000	2,395	2,540	1,902	1,205	707	575	<b>26,500</b>
UMATILLA	5,926	5,556	5,561	3,241	2,283	5,166	5,424	5,234	5,431	5,067	4,785	4,807	5,015	4,910	4,446	3,288	2,233	1,432	1,356	<b>81,160</b>
UNION	1,827	1,594	1,611	969	954	1,691	1,486	1,322	1,576	1,492	1,429	1,449	1,667	1,893	1,912	1,536	1,012	678	742	<b>26,840</b>
WALLOWA	476	369	360	187	107	169	211	410	336	407	314	386	495	684	747	590	383	250	269	<b>7,150</b>
WASCO	1,789	1,576	1,624	973	644	1,330	1,525	1,668	1,696	1,578	1,456	1,566	1,773	2,036	1,931	1,546	1,046	613	868	<b>27,240</b>
WASHINGTON	39,666	40,633	37,903	22,881	13,879	37,886	48,424	45,103	46,341	44,041	42,751	39,443	37,533	34,451	27,820	21,896	14,136	8,918	9,707	<b>613,410</b>
WHEELER	75	50	77	46	24	31	50	87	81	48	73	76	121	117	155	102	108	61	59	<b>1,440</b>
YAMHILL	6,524	6,698	6,933	4,238	3,591	7,229	6,408	6,346	6,987	6,851	6,483	6,595	6,815	7,219	6,260	4,923	3,505	2,055	2,402	<b>108,060</b>

**Table 9. Population by Age and Sex for Oregon and Its Counties: July 1, 2019**

Prepared by Population Research Center, PSU, April 2020.

Age Group	Male Population																			Total
	0-4	5-9	10-14	15-17	18-19	20-24	25-29	30-34	35-39	40-44	45-49	50-54	55-59	60-64	65-69	70-74	75-79	80-84	85+	
<b>OREGON</b>	<b>125,872</b>	<b>119,332</b>	<b>124,665</b>	<b>73,589</b>	<b>56,332</b>	<b>134,903</b>	<b>145,059</b>	<b>144,576</b>	<b>144,287</b>	<b>138,378</b>	<b>132,877</b>	<b>130,463</b>	<b>132,742</b>	<b>134,769</b>	<b>122,431</b>	<b>97,678</b>	<b>61,364</b>	<b>35,749</b>	<b>30,662</b>	<b>2,085,725</b>
BAKER	423	380	432	305	156	283	394	494	558	462	481	504	628	736	801	606	459	258	193	<b>8,555</b>
BENTON	1,663	1,741	2,183	1,404	3,122	7,561	3,974	2,881	2,486	2,282	2,294	2,367	2,565	2,763	2,735	2,197	1,322	755	747	<b>47,042</b>
CLACKAMAS	11,491	12,143	13,567	8,219	4,985	11,092	12,100	12,368	13,530	13,973	14,101	14,293	15,073	14,729	12,270	9,907	6,419	3,513	3,233	<b>207,007</b>
CLATSOP	1,016	980	995	680	511	1,062	1,006	1,315	1,295	1,195	1,144	1,150	1,417	1,546	1,614	1,205	699	383	302	<b>19,516</b>
COLUMBIA	1,378	1,407	1,749	982	614	1,231	1,262	1,741	1,616	1,822	1,705	1,937	1,970	2,083	1,863	1,308	904	420	339	<b>26,333</b>
COOS	1,844	1,457	1,669	942	741	1,267	1,463	1,882	1,807	1,644	1,693	1,851	2,290	2,671	2,656	2,282	1,482	932	725	<b>31,299</b>
CROOK	546	551	650	368	220	472	447	552	562	657	692	748	855	1,062	1,050	878	613	362	249	<b>11,532</b>
CURRY	440	381	506	309	170	348	461	504	602	436	567	648	950	1,246	1,397	1,097	668	412	308	<b>11,451</b>
DESCHUTES	5,978	5,845	6,177	3,501	2,132	4,711	5,696	6,173	6,646	6,519	6,233	5,900	5,729	6,522	6,199	5,033	2,926	1,802	1,338	<b>95,059</b>
DOUGLAS	2,911	2,574	3,070	1,884	1,256	2,498	2,592	3,155	2,942	3,047	3,057	3,344	3,921	4,716	4,679	4,123	2,636	1,675	1,374	<b>55,453</b>
GILLIAM	63	25	61	29	11	33	38	60	56	62	58	69	83	122	87	82	41	29	24	<b>1,032</b>
GRANT	133	119	162	100	57	105	127	188	201	159	190	179	290	326	419	351	272	136	127	<b>3,641</b>
HARNEY	203	188	206	151	84	135	171	231	187	194	173	197	272	360	348	257	201	96	83	<b>3,738</b>
HOOD RIVER	749	933	865	536	351	720	794	777	826	875	876	901	927	871	721	470	324	158	159	<b>12,835</b>
JACKSON	6,472	5,603	6,487	3,589	2,555	5,908	6,157	6,452	6,889	6,546	6,457	6,702	7,225	7,634	7,621	6,550	4,198	2,497	2,227	<b>107,767</b>
JEFFERSON	845	599	821	414	272	619	721	797	796	745	828	856	1,010	922	881	745	410	260	141	<b>12,681</b>
JOSEPHINE	2,164	1,967	2,379	1,445	921	1,758	2,116	2,444	2,374	2,245	2,363	2,515	2,894	3,587	3,428	3,219	2,018	1,246	1,080	<b>42,163</b>
KLAMATH	1,871	1,795	1,942	1,145	907	1,884	1,860	2,009	1,912	1,946	2,056	2,060	2,392	2,509	2,584	2,098	1,399	763	560	<b>33,692</b>
LAKE	145	155	173	130	57	133	184	324	264	365	316	325	369	379	421	306	216	109	89	<b>4,459</b>
LANE	8,747	8,557	9,767	6,134	6,740	16,965	13,446	12,379	10,848	11,341	10,713	10,985	11,525	12,338	11,925	9,982	6,190	3,643	3,151	<b>185,378</b>
LINCOLN	1,193	939	1,054	653	470	885	1,068	1,334	1,410	1,199	1,282	1,369	1,760	2,237	2,429	1,986	1,086	662	438	<b>23,455</b>
LINN	4,259	3,921	4,132	2,287	1,625	3,481	3,671	3,938	4,135	3,667	3,847	3,796	4,165	4,197	3,890	3,097	2,031	1,235	938	<b>62,314</b>
MALHEUR	1,183	1,025	1,045	607	506	1,172	1,228	1,171	1,233	1,160	1,056	1,073	995	1,110	928	726	559	301	325	<b>17,402</b>
MARION	12,861	12,210	11,993	7,228	5,323	12,278	11,962	11,544	10,844	10,651	10,045	10,079	10,196	9,843	8,517	6,958	4,342	2,685	2,256	<b>171,814</b>
MORROW	402	420	458	276	171	403	405	347	425	393	433	381	404	509	364	307	183	115	88	<b>6,485</b>
MULTNOMAH	24,488	21,185	20,722	11,451	9,623	27,412	36,637	36,497	35,757	32,148	28,703	25,922	23,676	21,866	18,646	13,583	7,814	4,237	3,847	<b>404,215</b>
POLK	2,725	2,698	2,844	1,626	1,449	2,945	2,419	2,331	2,548	2,372	2,357	2,282	2,304	2,330	2,269	1,946	1,316	787	635	<b>40,181</b>
SHERMAN	52	35	51	31	10	26	28	61	67	48	62	43	61	100	63	63	47	22	33	<b>902</b>
TILLAMOOK	798	599	774	413	285	538	640	679	780	766	719	817	987	1,171	1,254	971	581	322	247	<b>13,343</b>
UMATILLA	3,120	2,708	2,912	1,668	1,173	2,885	3,079	2,960	3,052	2,831	2,562	2,542	2,658	2,479	2,214	1,675	1,087	663	522	<b>42,791</b>
UNION	945	848	810	548	496	787	807	647	774	781	679	742	793	905	984	770	471	297	250	<b>13,333</b>
WALLOWA	205	152	155	85	52	74	108	172	179	205	145	187	208	328	365	330	198	129	121	<b>3,397</b>
WASCO	864	786	781	511	349	671	819	826	870	794	714	785	837	1,019	1,012	753	514	274	303	<b>13,482</b>
WASHINGTON	20,201	20,926	19,443	11,736	7,127	18,907	23,721	22,017	22,281	21,368	20,958	19,568	17,950	16,089	12,742	9,445	6,035	3,624	3,313	<b>297,452</b>
WHEELER	45	27	39	23	20	15	30	64	37	24	30	31	57	51	81	39	61	24	21	<b>721</b>
YAMHILL	3,449	3,452	3,591	2,179	1,789	3,636	3,428	3,262	3,496	3,455	3,288	3,313	3,305	3,410	2,973	2,336	1,644	920	878	<b>53,804</b>

**Table 9. Population by Age and Sex for Oregon and Its Counties: July 1, 2019**

Prepared by Population Research Center, PSU, April 2020.

**Female Population**

<b>Age Group</b>	<b>0-4</b>	<b>5-9</b>	<b>10-14</b>	<b>15-17</b>	<b>18-19</b>	<b>20-24</b>	<b>25-29</b>	<b>30-34</b>	<b>35-39</b>	<b>40-44</b>	<b>45-49</b>	<b>50-54</b>	<b>55-59</b>	<b>60-64</b>	<b>65-69</b>	<b>70-74</b>	<b>75-79</b>	<b>80-84</b>	<b>85+</b>	<b>Total</b>
<b>OREGON</b>	<b>119,441</b>	<b>115,310</b>	<b>118,132</b>	<b>69,713</b>	<b>54,325</b>	<b>131,867</b>	<b>143,449</b>	<b>143,997</b>	<b>145,995</b>	<b>139,615</b>	<b>132,500</b>	<b>131,272</b>	<b>140,573</b>	<b>146,826</b>	<b>135,375</b>	<b>108,763</b>	<b>72,291</b>	<b>46,226</b>	<b>55,005</b>	<b>2,150,675</b>
BAKER	498	355	453	260	127	251	327	406	432	397	390	500	660	810	747	658	417	307	270	<b>8,265</b>
BENTON	1,787	2,042	2,095	1,434	3,072	6,580	3,188	2,836	2,463	2,313	2,354	2,449	2,767	3,103	2,919	2,220	1,523	943	1,229	<b>47,318</b>
CLACKAMAS	10,238	11,893	12,399	7,903	4,622	10,543	12,000	12,668	13,803	14,430	14,567	14,837	15,987	15,823	13,905	11,661	7,763	4,877	6,491	<b>216,413</b>
CLATSOP	1,214	960	1,116	575	474	976	936	1,112	1,237	1,090	1,124	1,163	1,486	1,683	1,779	1,146	763	479	504	<b>19,814</b>
COLUMBIA	1,284	1,380	1,561	891	558	1,086	1,250	1,686	1,675	1,828	1,712	1,939	2,030	2,176	1,730	1,514	993	531	592	<b>26,417</b>
COOS	1,726	1,464	1,601	934	723	1,275	1,440	1,825	1,742	1,681	1,617	1,808	2,380	2,854	2,852	2,391	1,652	1,088	937	<b>31,991</b>
CROOK	481	547	574	357	192	448	495	583	580	706	749	741	1,023	1,139	1,072	902	611	339	368	<b>11,908</b>
CURRY	379	345	439	249	155	305	404	467	575	555	608	696	981	1,348	1,241	1,181	714	442	466	<b>11,549</b>
DESCHUTES	5,557	5,489	5,707	3,241	1,955	4,572	5,628	6,240	6,962	6,686	6,338	6,193	6,712	7,285	6,627	5,077	3,313	1,999	2,360	<b>97,941</b>
DOUGLAS	2,697	2,574	2,869	1,772	1,118	2,384	2,537	2,999	3,089	3,071	3,048	3,403	4,252	4,914	4,889	4,094	2,893	1,918	2,276	<b>56,797</b>
GILLIAM	51	37	43	27	9	17	27	39	29	50	50	56	99	96	122	60	51	35	60	<b>958</b>
GRANT	149	136	179	89	47	119	117	177	163	181	196	227	303	395	377	299	230	163	172	<b>3,719</b>
HARNEY	178	173	206	127	65	113	210	190	205	201	215	217	297	315	306	225	154	108	118	<b>3,622</b>
HOOD RIVER	740	728	818	478	264	605	736	781	801	958	871	933	908	848	740	464	348	248	375	<b>12,645</b>
JACKSON	6,221	5,483	6,312	3,590	2,596	5,970	6,142	6,603	6,568	6,717	6,369	6,715	7,794	8,858	8,435	7,221	4,932	3,172	3,823	<b>113,523</b>
JEFFERSON	676	614	707	411	265	522	667	623	569	613	685	749	852	911	795	591	423	267	220	<b>11,159</b>
JOSEPHINE	2,112	1,993	2,352	1,335	808	1,830	1,864	2,403	2,184	2,319	2,352	2,671	3,280	3,958	3,801	3,480	2,418	1,590	1,838	<b>44,587</b>
KLAMATH	1,910	1,607	1,961	1,063	838	1,908	1,891	2,026	1,917	1,895	2,007	2,131	2,492	2,699	2,750	2,165	1,456	875	905	<b>34,498</b>
LAKE	197	131	213	119	42	107	146	181	181	211	210	248	256	391	333	248	200	108	99	<b>3,621</b>
LANE	8,739	8,645	9,189	5,699	6,899	15,756	13,086	11,827	11,284	11,351	10,844	11,312	12,788	13,838	13,800	11,073	7,063	4,718	5,592	<b>193,502</b>
LINCOLN	1,247	901	1,110	552	391	765	942	1,272	1,297	1,290	1,223	1,533	2,057	2,642	2,773	2,079	1,251	735	746	<b>24,805</b>
LINN	3,733	3,646	3,876	2,233	1,553	3,594	3,852	4,172	4,160	3,814	3,834	3,794	4,420	4,421	4,196	3,464	2,380	1,512	1,582	<b>64,236</b>
MALHEUR	1,072	962	1,017	558	435	851	834	814	868	810	773	790	897	860	934	787	549	375	442	<b>14,628</b>
MARION	11,832	11,635	11,187	6,717	5,010	11,396	11,900	11,195	11,354	10,655	10,295	10,119	10,595	10,842	9,933	7,981	5,398	3,595	4,307	<b>175,946</b>
MORROW	360	451	433	275	163	318	342	339	366	380	375	390	410	480	401	311	196	109	100	<b>6,195</b>
MULTNOMAH	23,370	20,403	19,824	11,116	9,616	29,297	37,870	37,172	36,197	32,060	27,755	25,197	23,687	23,103	20,960	15,740	10,006	6,279	7,864	<b>417,515</b>
POLK	2,683	2,458	2,789	1,512	1,603	3,308	2,524	2,409	2,744	2,613	2,281	2,427	2,469	2,699	2,709	2,191	1,497	920	924	<b>42,759</b>
SHERMAN	55	37	45	20	18	22	36	50	54	41	39	52	66	84	64	74	55	34	23	<b>868</b>
TILLAMOOK	807	645	719	392	232	427	521	680	736	674	705	828	1,013	1,224	1,285	931	624	385	328	<b>13,157</b>
UMATILLA	2,806	2,848	2,649	1,574	1,110	2,281	2,345	2,273	2,380	2,236	2,223	2,264	2,357	2,431	2,233	1,612	1,146	768	834	<b>38,369</b>
UNION	882	746	801	421	458	904	680	674	802	711	750	707	874	988	928	766	542	381	492	<b>13,507</b>
WALLOWA	271	217	205	101	55	95	103	239	157	202	169	199	288	357	381	261	185	121	147	<b>3,753</b>
WASCO	925	790	843	463	295	658	706	842	826	783	742	781	937	1,016	919	792	533	339	565	<b>13,758</b>
WASHINGTON	19,464	19,707	18,460	11,145	6,751	18,978	24,704	23,086	24,060	22,673	21,792	19,875	19,583	18,362	15,078	12,451	8,102	5,294	6,394	<b>315,958</b>
WHEELER	29	24	37	23	4	16	20	22	44	24	43	45	64	66	74	63	47	37	37	<b>719</b>
YAMHILL	3,075	3,246	3,343	2,060	1,802	3,592	2,979	3,084	3,490	3,396	3,195	3,282	3,510	3,809	3,286	2,587	1,861	1,135	1,525	<b>54,256</b>

**Table 10. Population by Age Groups (less than 18 Years, 18-64 Years, and 65 Years and Older for Oregon and Its Counties: July 1, 2019**

Compiled by Population Research Center, PSU, April 2020

	Ages 0-17		Ages 18-64		Ages 65 and over		Total
	Population	% of Total Population	Population	% of Total Population	Population	% of Total Population	Total Population
<b>OREGON</b>	866,055	20.4%	2,604,804	61.5%	765,542	18.1%	4,236,400
<b>Counties</b>							
BAKER	3,106	18.5%	8,998	53.5%	4,716	28.0%	16,820
BENTON	14,348	15.2%	63,422	67.2%	16,590	17.6%	94,360
CLACKAMAS	87,854	20.7%	255,526	60.3%	80,040	18.9%	423,420
CLATSOP	7,536	19.2%	22,921	58.3%	8,873	22.6%	39,330
COLUMBIA	10,633	20.2%	31,921	60.5%	10,195	19.3%	52,750
COOS	11,638	18.4%	34,654	54.8%	16,998	26.9%	63,290
CROOK	4,074	17.4%	12,922	55.1%	6,443	27.5%	23,440
CURRY	3,048	13.3%	12,026	52.3%	7,926	34.5%	23,000
DESCHUTES	41,494	21.5%	114,833	59.5%	36,673	19.0%	193,000
DOUGLAS	20,350	18.1%	61,343	54.6%	30,557	27.2%	112,250
GILLIAM	335	16.8%	1,064	53.4%	591	29.7%	1,990
GRANT	1,066	14.5%	3,747	50.9%	2,547	34.6%	7,360
HARNEY	1,431	19.4%	4,033	54.8%	1,896	25.8%	7,360
HOOD RIVER	5,848	23.0%	15,623	61.3%	4,009	15.7%	25,480
JACKSON	43,759	19.8%	126,855	57.3%	50,677	22.9%	221,290
JEFFERSON	5,087	21.3%	14,022	58.8%	4,731	19.8%	23,840
JOSEPHINE	15,747	18.2%	46,886	54.0%	24,117	27.8%	86,750
KLAMATH	13,294	19.5%	39,341	57.7%	15,556	22.8%	68,190
LAKE	1,263	15.6%	4,688	58.0%	2,129	26.3%	8,080
LANE	65,477	17.3%	236,266	62.4%	77,137	20.4%	378,880
LINCOLN	7,649	15.9%	26,427	54.8%	14,184	29.4%	48,260
LINN	28,087	22.2%	74,139	58.6%	24,324	19.2%	126,550
MALHEUR	7,468	23.3%	18,636	58.2%	5,926	18.5%	32,030
MARION	85,663	24.6%	206,126	59.3%	55,972	16.1%	347,760
MORROW	3,074	24.2%	7,432	58.6%	2,174	17.1%	12,680
MULTNOMAH	152,558	18.6%	560,196	68.2%	108,976	13.3%	821,730
POLK	19,334	23.3%	48,413	58.4%	15,194	18.3%	82,940
SHERMAN	325	18.3%	967	54.6%	479	27.0%	1,770
TILLAMOOK	5,146	19.4%	14,424	54.4%	6,929	26.1%	26,500
UMATILLA	20,284	25.0%	48,121	59.3%	12,754	15.7%	81,160
UNION	6,000	22.4%	14,959	55.7%	5,881	21.9%	26,840
WALLOWA	1,391	19.5%	3,520	49.2%	2,239	31.3%	7,150
WASCO	5,963	21.9%	15,273	56.1%	6,004	22.0%	27,240
WASHINGTON	141,083	23.0%	389,851	63.6%	82,476	13.4%	613,410
WHEELER	247	17.2%	709	49.2%	484	33.6%	1,440
YAMHILL	24,394	22.6%	64,522	59.7%	19,145	17.7%	108,060