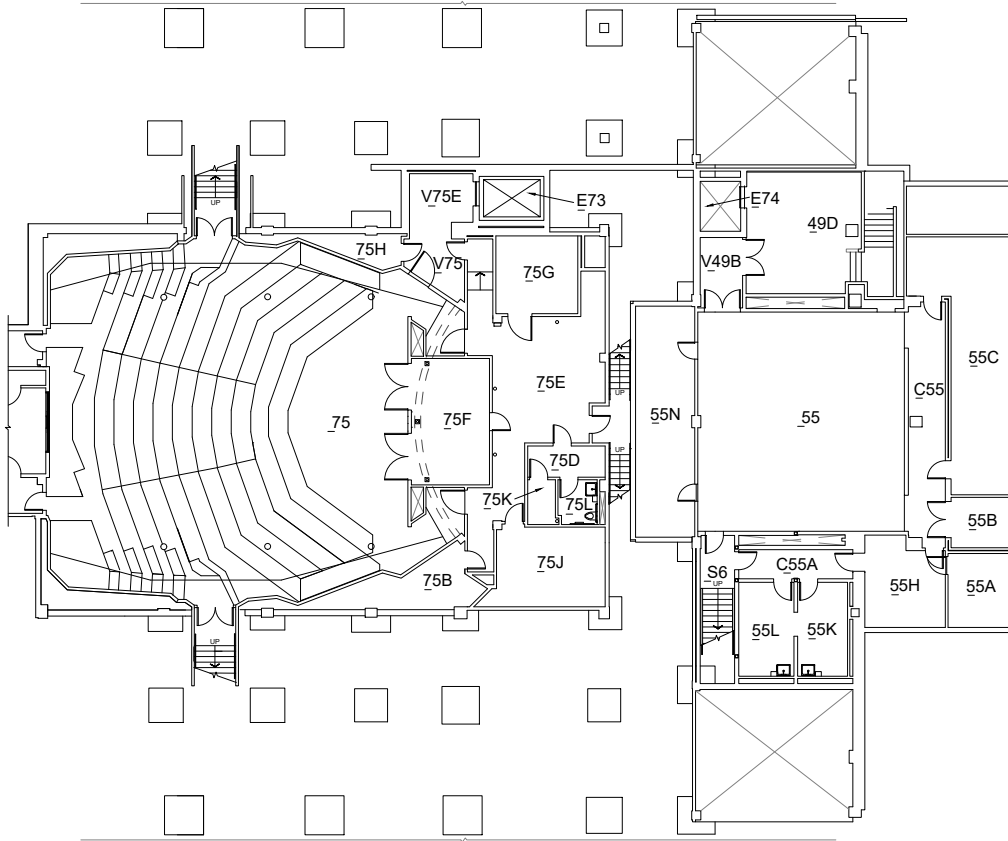


Lincoln Hall (LH)

MAIN ENTRANCE ON BASEMENT

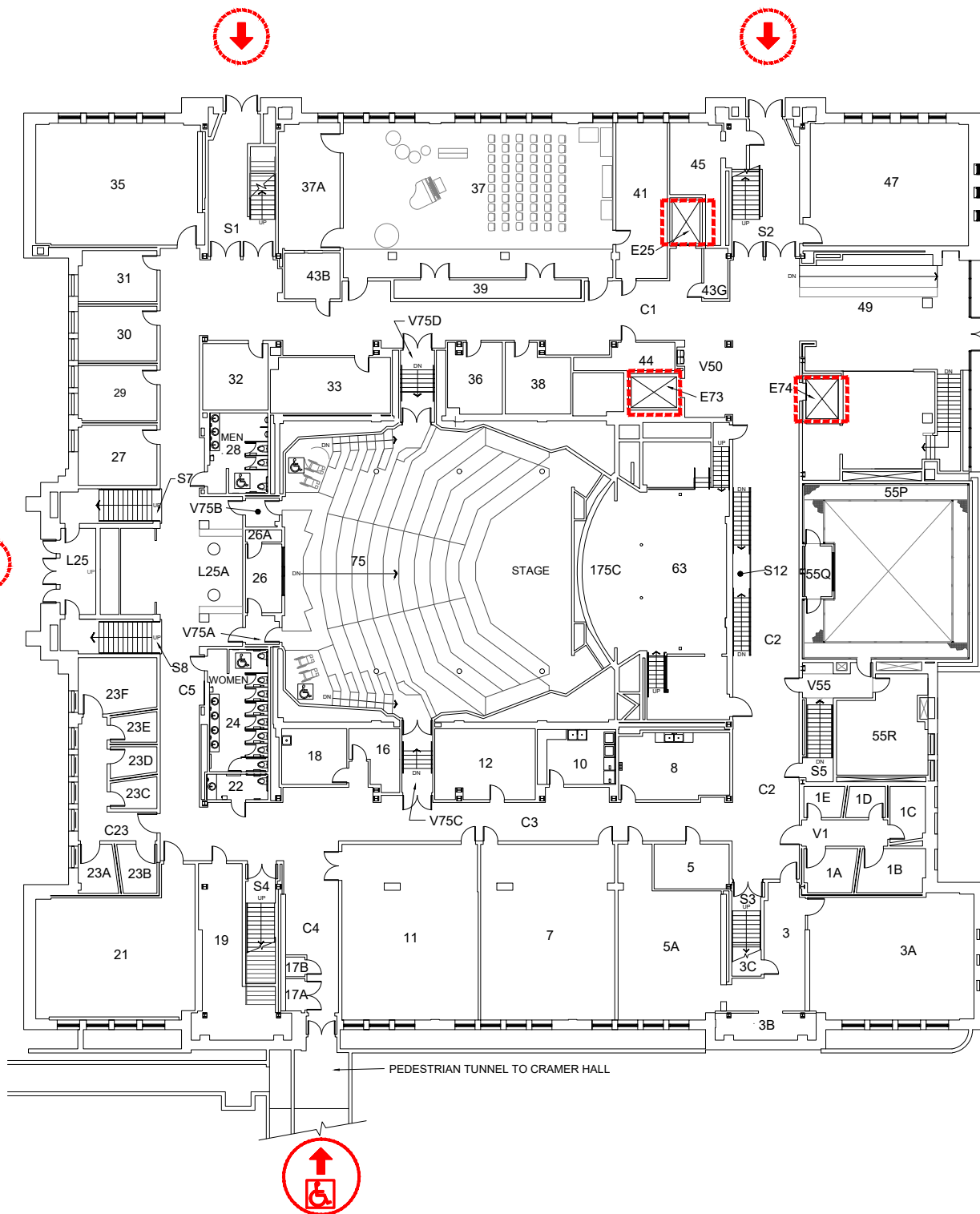
If you need assistance, or an accommodation to access an office or classroom please contact:
For Student - Disability Resource Center at (503) 725-4150
For Employees - Human Resources at (503) 725-4926



Scale

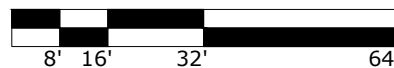
1/32" = 1'-0"





Scale

1/32" = 1'-0"



ELEVATOR ACCESS



WHEELCHAIR ACCESS



BUILDING ACCESS - NOT
WHEELCHAIR ACCESSIBLE

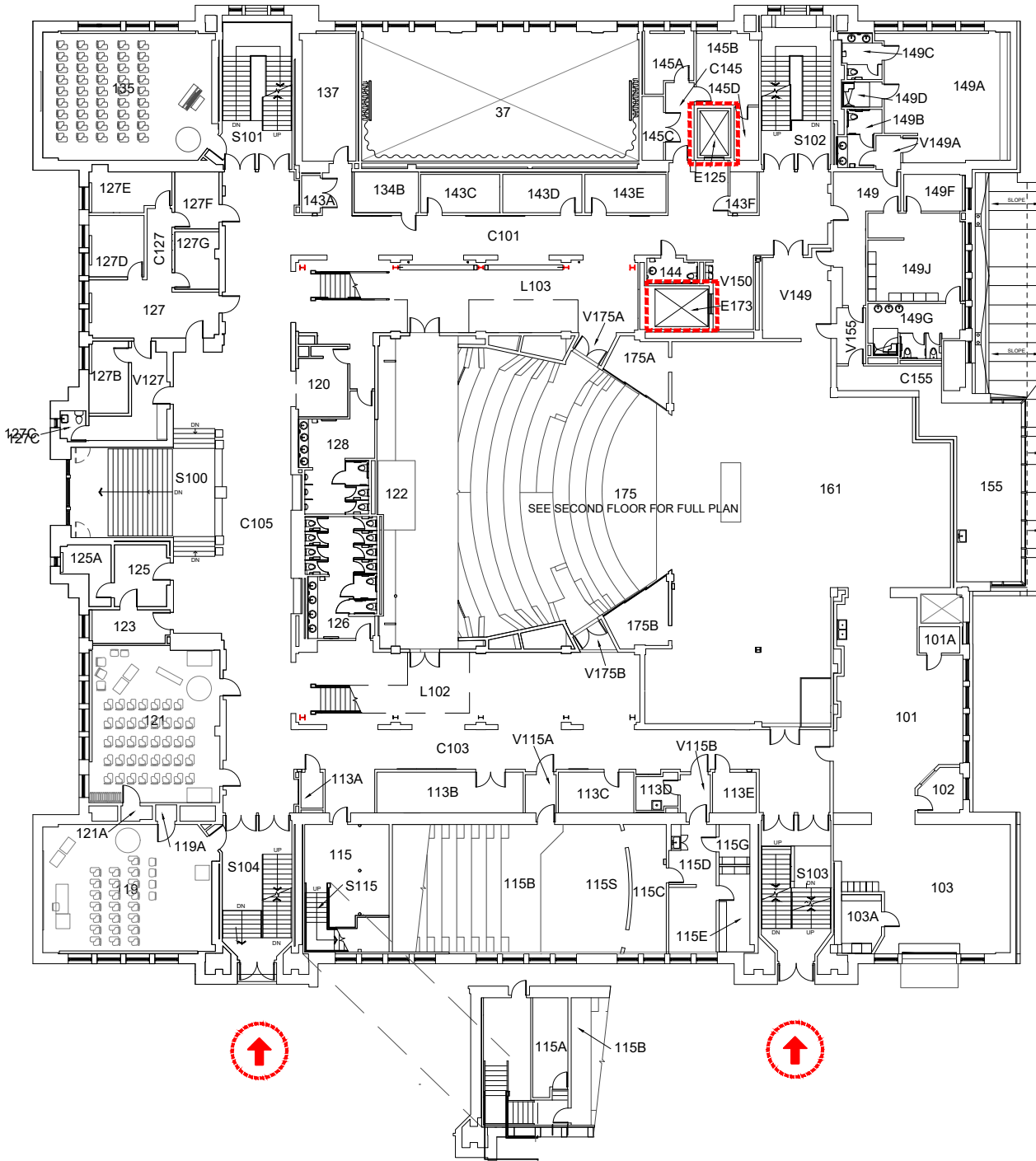


Portland State
UNIVERSITY

BASEMENT
Lincoln Hall
1620 S.W. Park Avenue

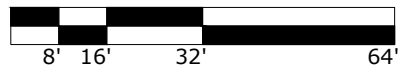
DRAWN BY:
TJK
DATE:
03/2023

202 - A2



Scale

1/32" = 1'-0"



ELEVATOR ACCESS



WHEELCHAIR ACCESS



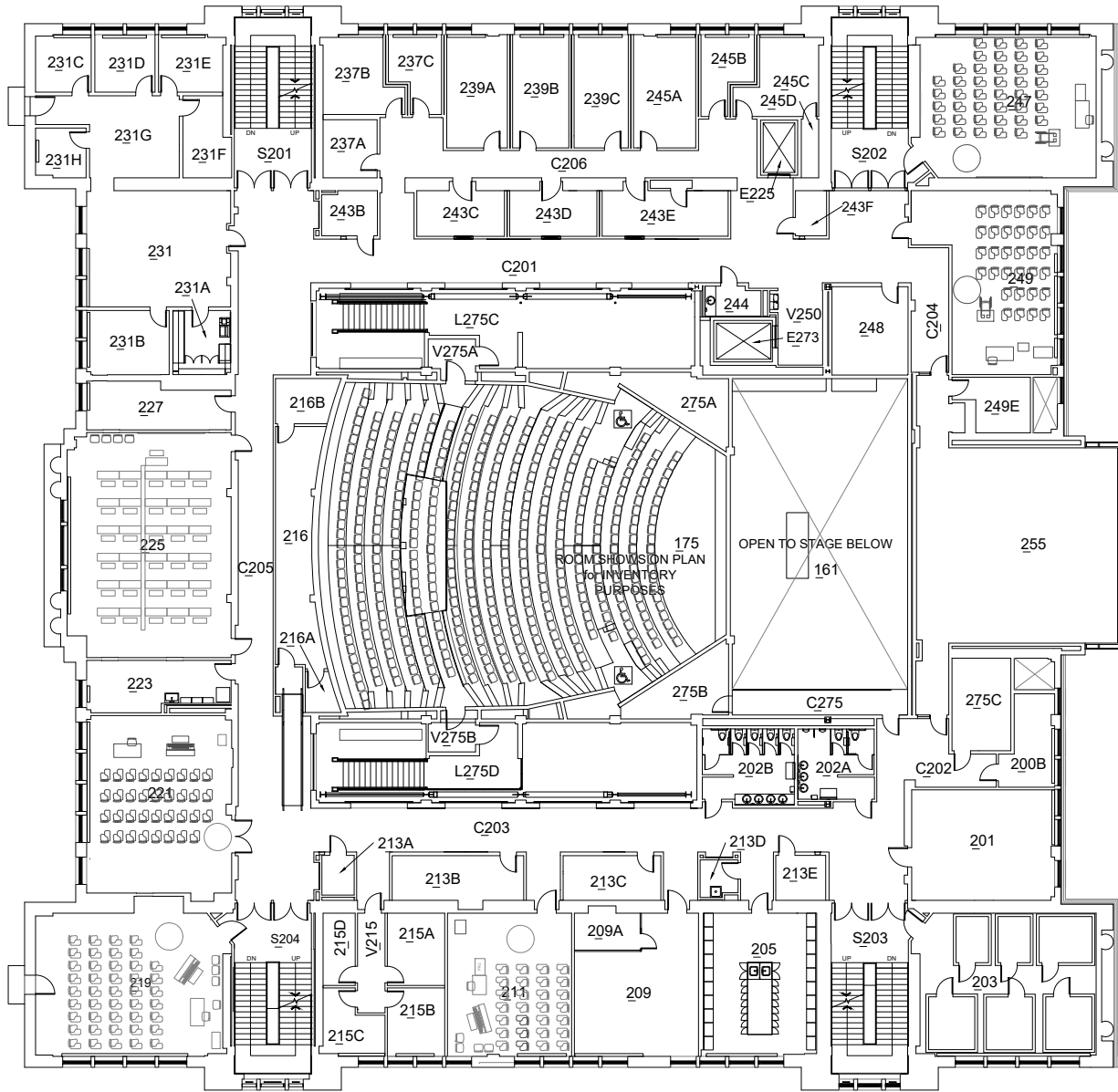
BUILDING ACCESS - NOT WHEELCHAIR ACCESSIBLE



FIRST FLOOR
Lincoln Hall
1620 S.W. Park Avenue

DRAWN BY:
JL
DATE:
04/2020

202 - A3



Scale

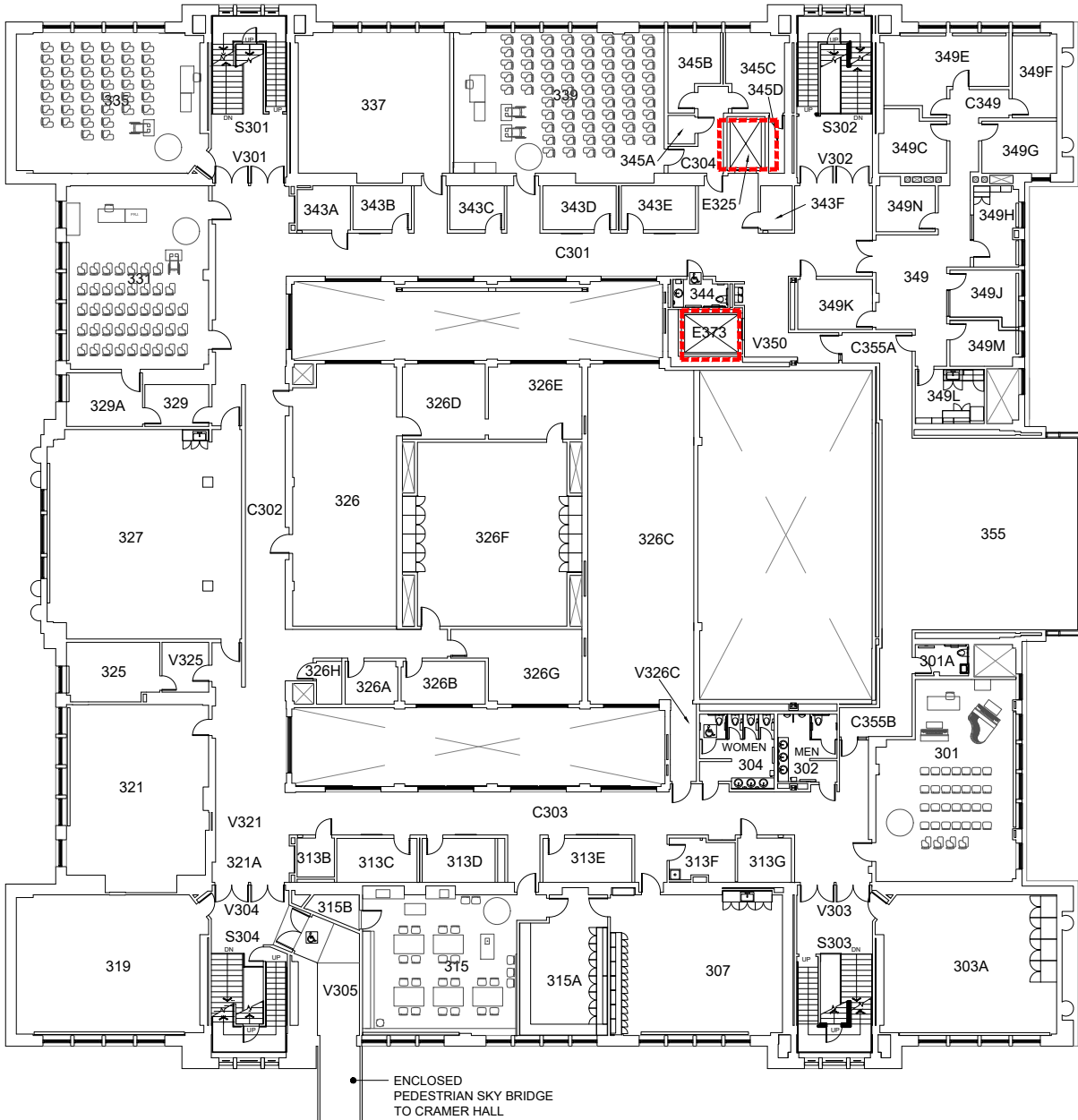
1/32" = 1'-0"



SECOND FLOOR
Lincoln Hall
1620 S.W. Park Avenue

DRAWN BY:
JL
DATE:
04/2020

202 - A4



Scale

1/32" = 1'-0"



ELEVATOR ACCESS



WHEELCHAIR ACCESS



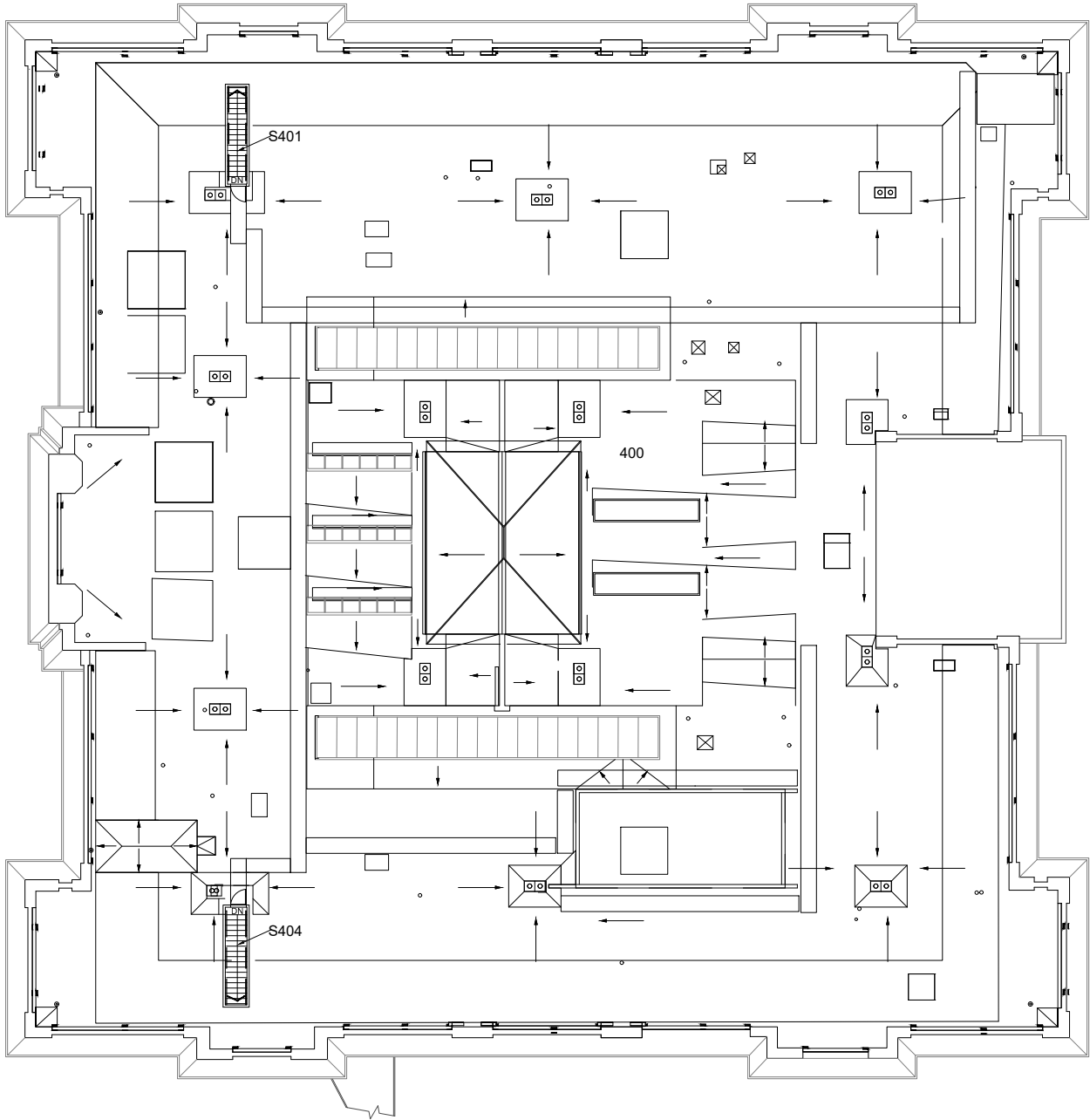
BUILDING ACCESS - NOT WHEELCHAIR ACCESSIBLE



THIRD FLOOR
Lincoln Hall
1620 S.W. Park Avenue

DRAWN BY:
JL
DATE:
04/2020

202 - A5



Scale
 1/32" = 1'-0"



ROOF FLOOR PLAN
 Lincoln Hall
 1620 S.W. Park Avenue

DRAWN BY:
 JL
 DATE:
 04/2020

202 - A6