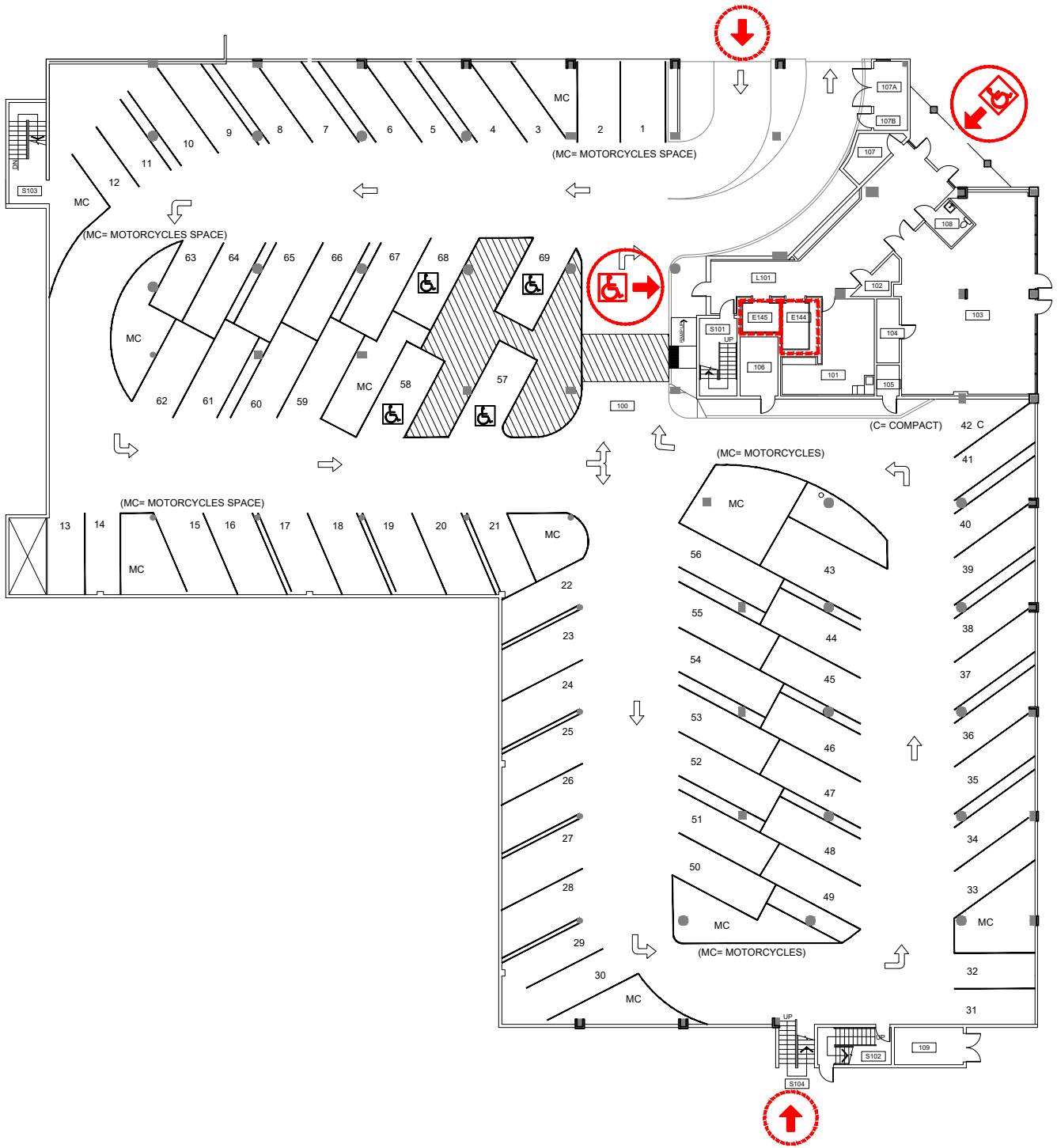


Joseph C. Blumel Hall (BLU)

MAIN ENTRANCE ON FIRST FLOOR

If you need assistance, or an accommodation to access an office or classroom please contact:
For Student - Disability Resource Center at (503) 725-4150
For Employees - Human Resources at (503) 725-4926



Scale
 1/32" = 1'-0"



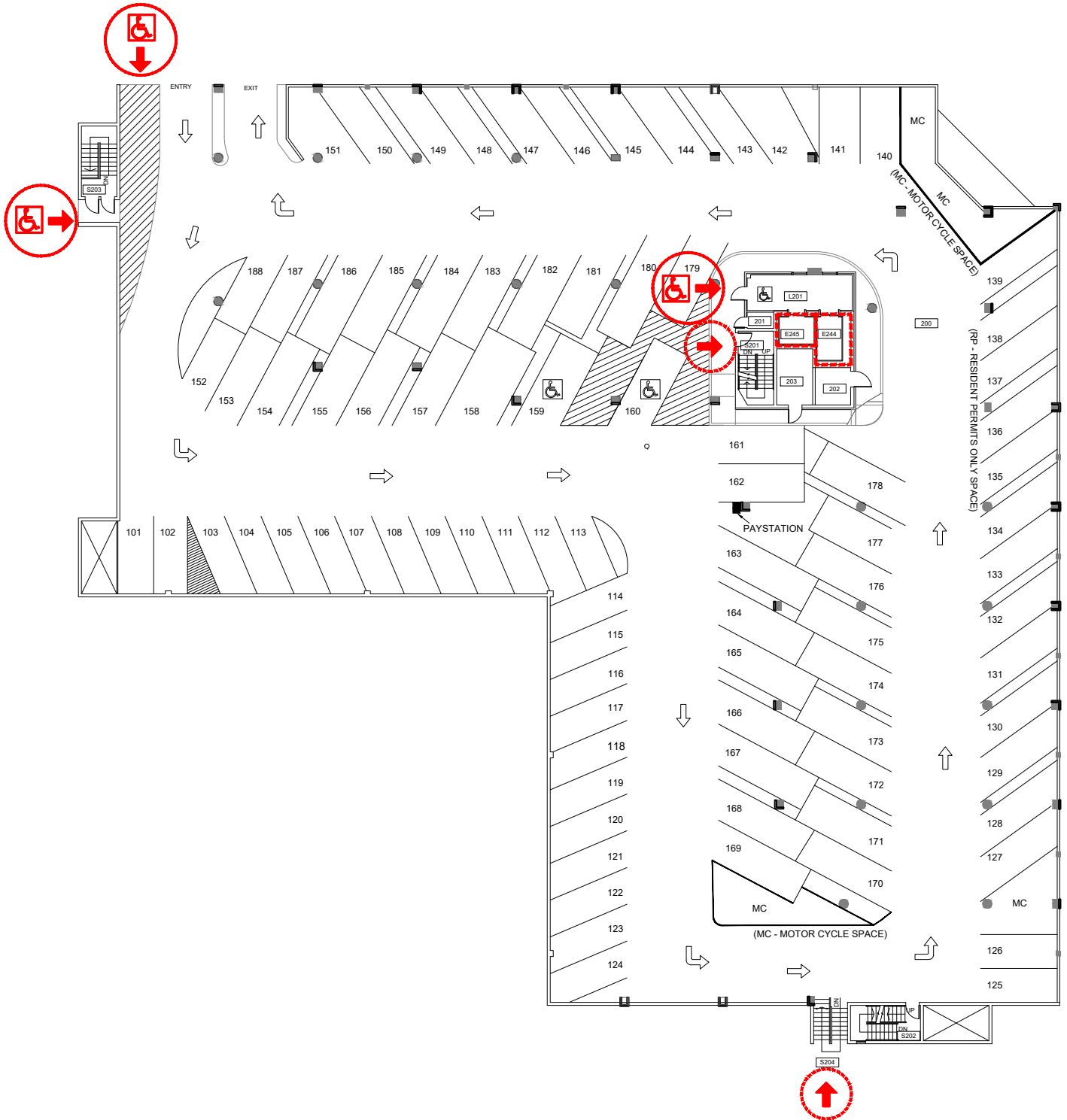
- 
 ELEVATOR ACCESS
- 
 WHEELCHAIR ACCESS
- 
 BUILDING ACCESS - NOT WHEELCHAIR ACCESSIBLE



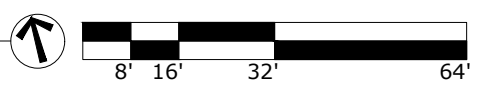
FIRST FLOOR PLAN
 Joseph C. Blumel Hall
 1705 SW 11th Ave

DRAWN BY:
 HH
 DATE:
 01/2021

268_A1



Scale
 1/32" = 1'-0"



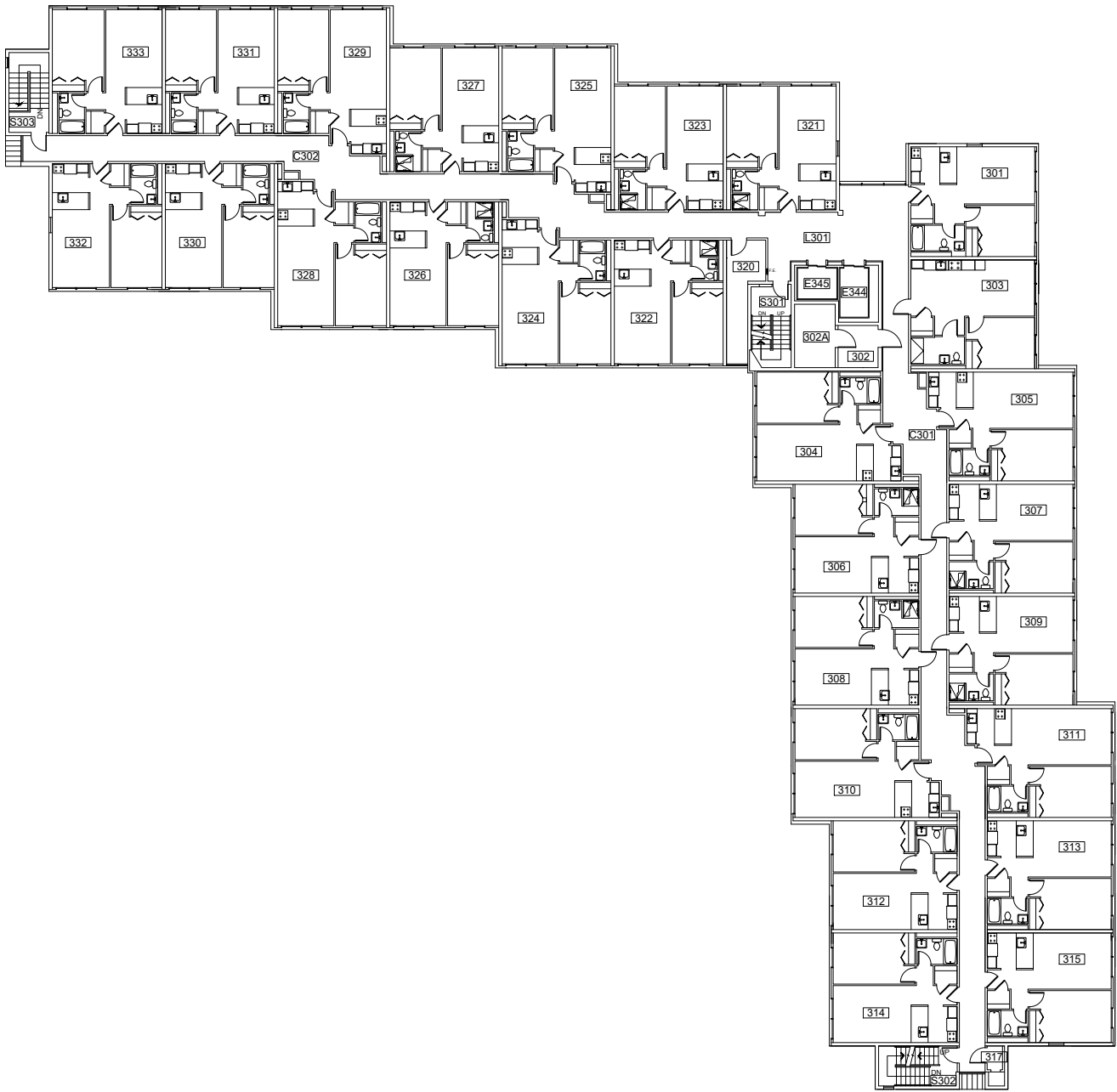
- 
 ELEVATOR ACCESS
- 
 WHEELCHAIR ACCESS
- 
 BUILDING ACCESS - NOT WHEELCHAIR ACCESSIBLE



SECOND FLOOR PLAN
 Joseph C. Blumel Hall
 1705 SW 11th Ave

DRAWN BY:
 HH
 DATE:
 01/2021

268_A2

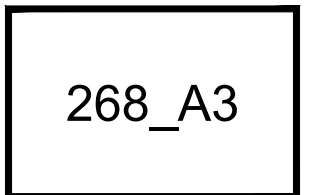


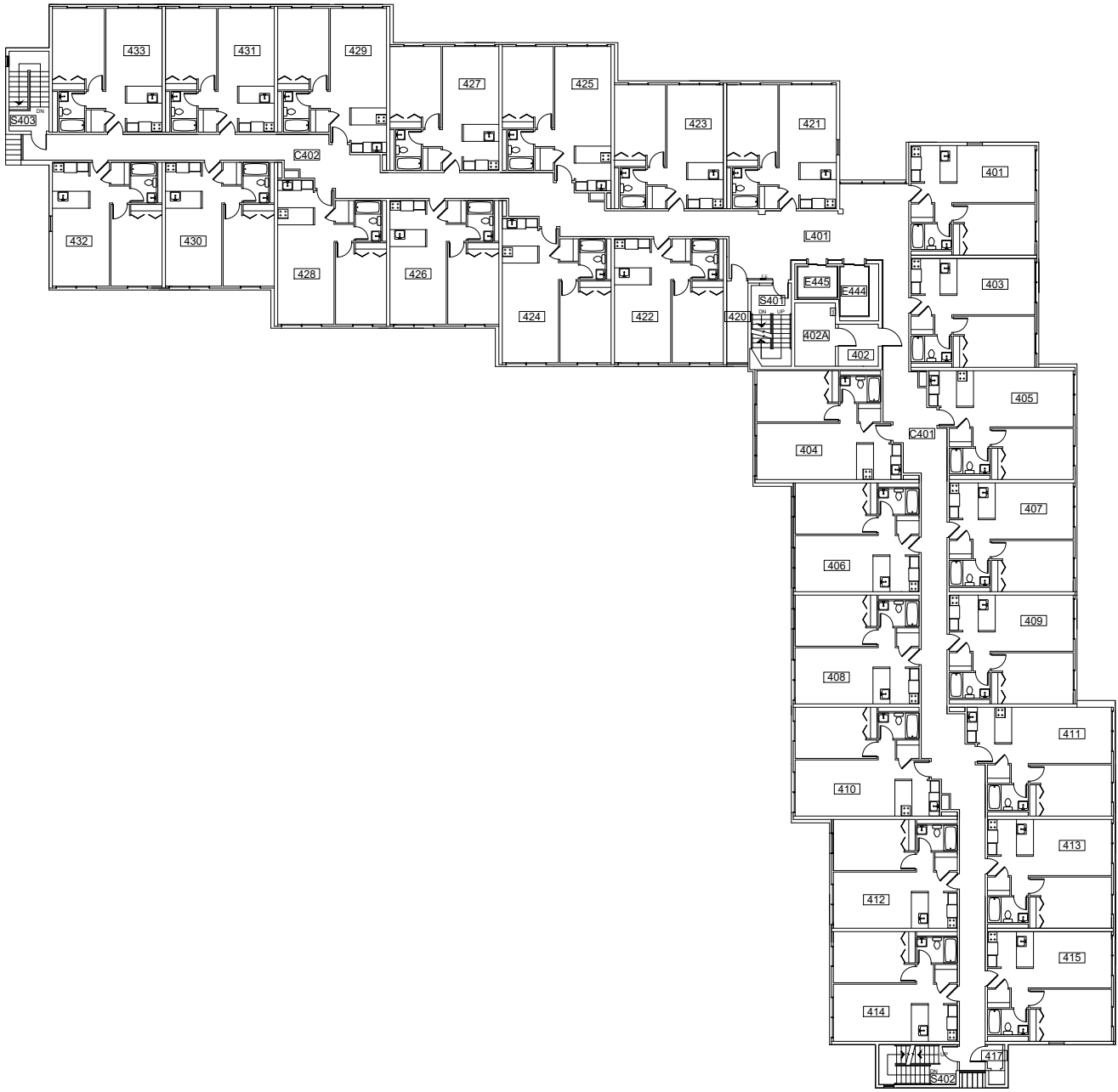
Scale
 1/32" = 1'-0"



THIRD FLOOR PLAN
 Joseph C. Blumel Hall
 1705 SW 11th Ave

DRAWN BY:
 HH
 DATE:
 01/2021



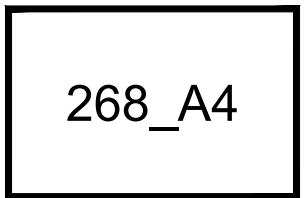


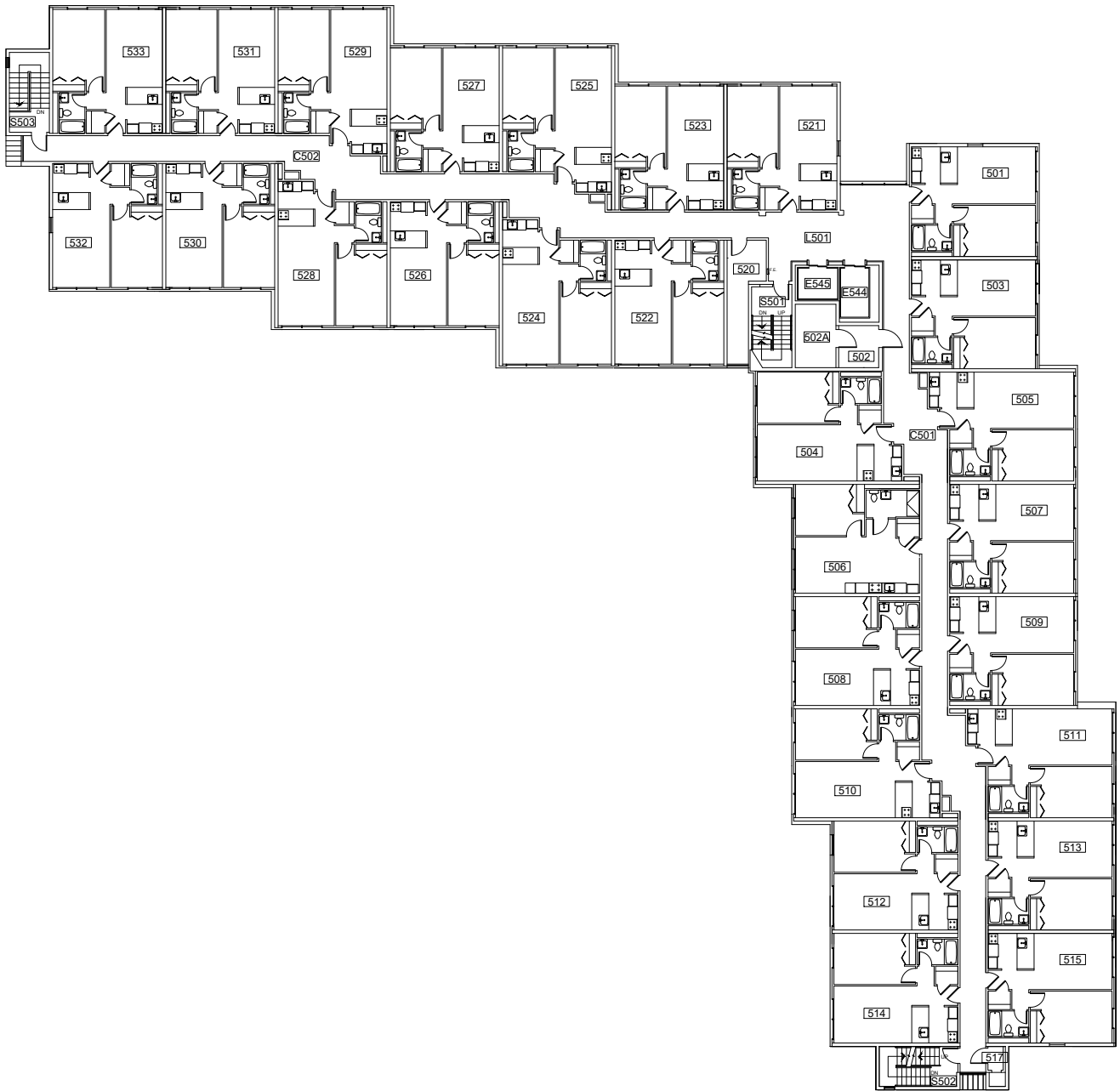
Scale
 1/32" = 1'-0"



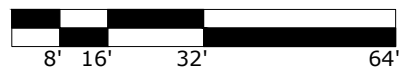
FOURTH FLOOR PLAN
 Joseph C. Blumel Hall
 1705 SW 11th Ave

DRAWN BY:
 HH
 DATE:
 01/2021



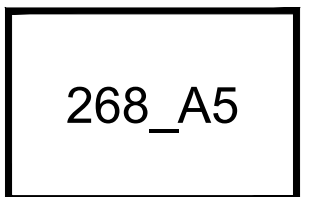


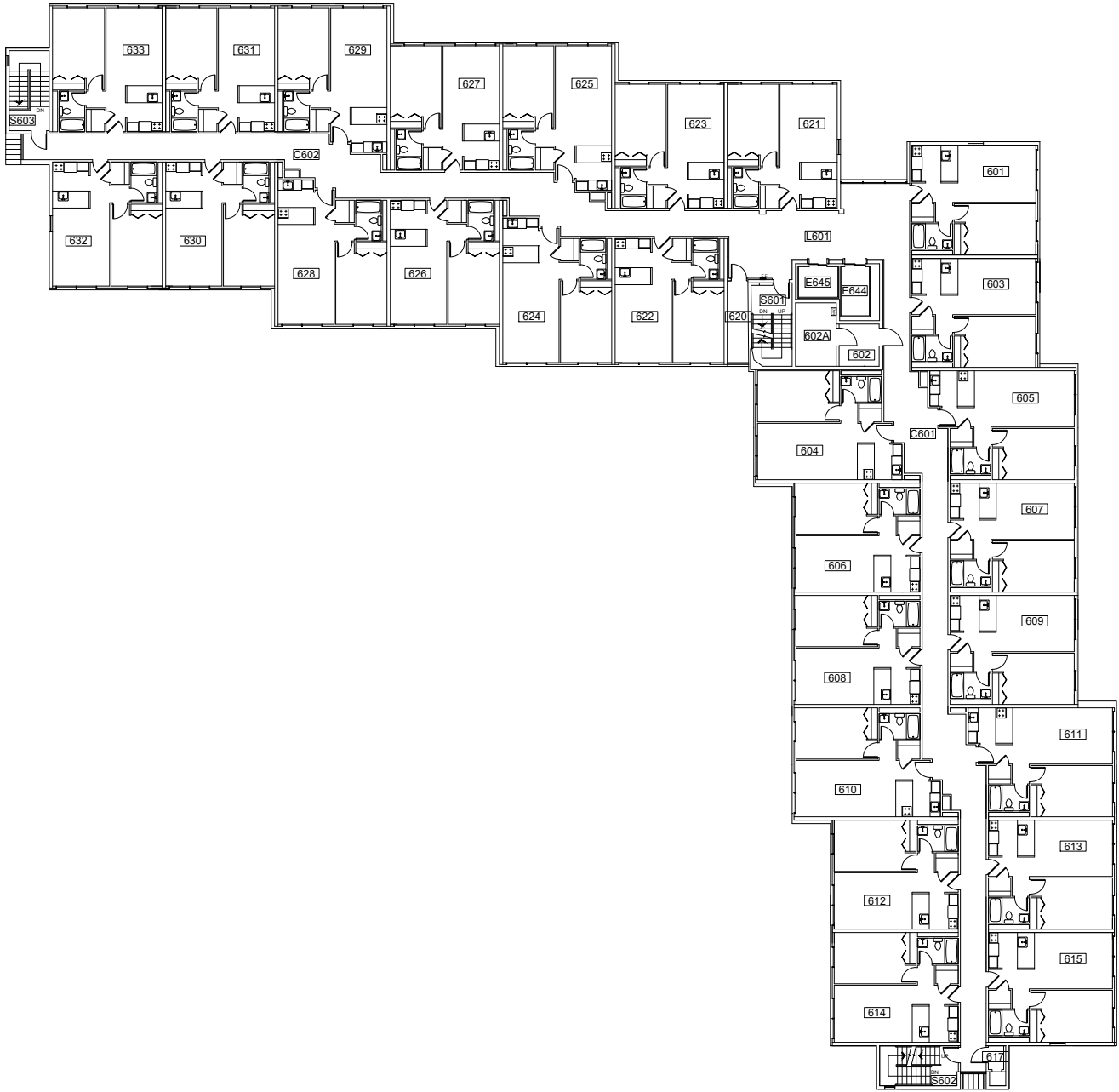
Scale
 1/32" = 1'-0"



FIFTH FLOOR PLAN
 Joseph C. Blumel Hall
 1705 SW 11th Ave

DRAWN BY:
 HH
 DATE:
 01/2021



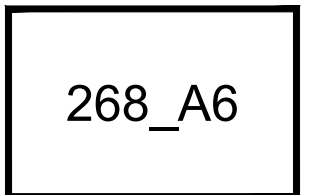


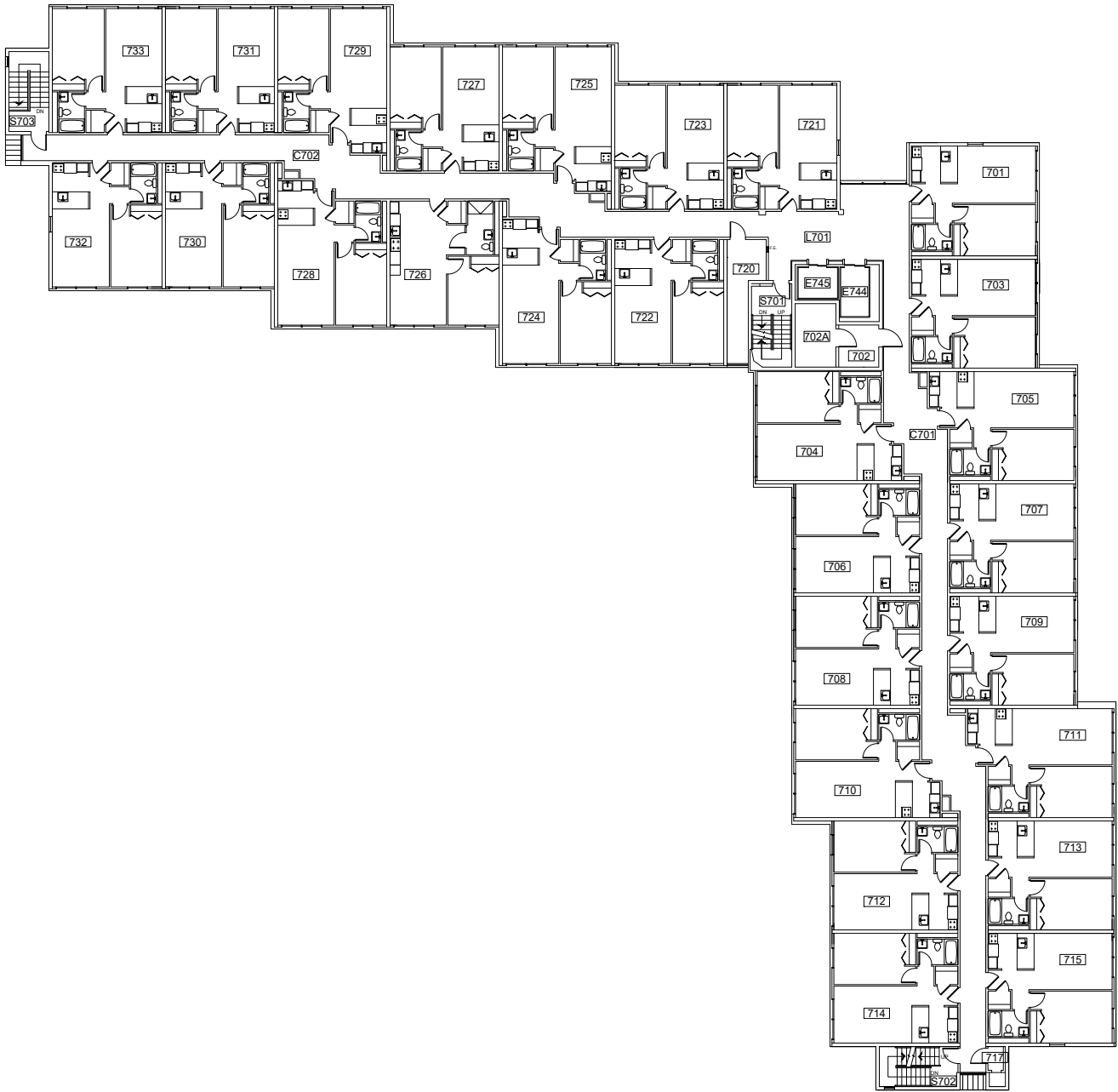
Scale
 1/32" = 1'-0"



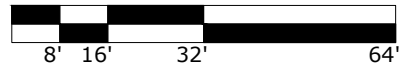
SIXTH FLOOR PLAN
 Joseph C. Blumel Hall
 1705 SW 11th Ave

DRAWN BY:
 HH
 DATE:
 01/2021



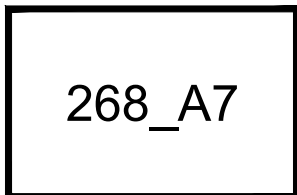


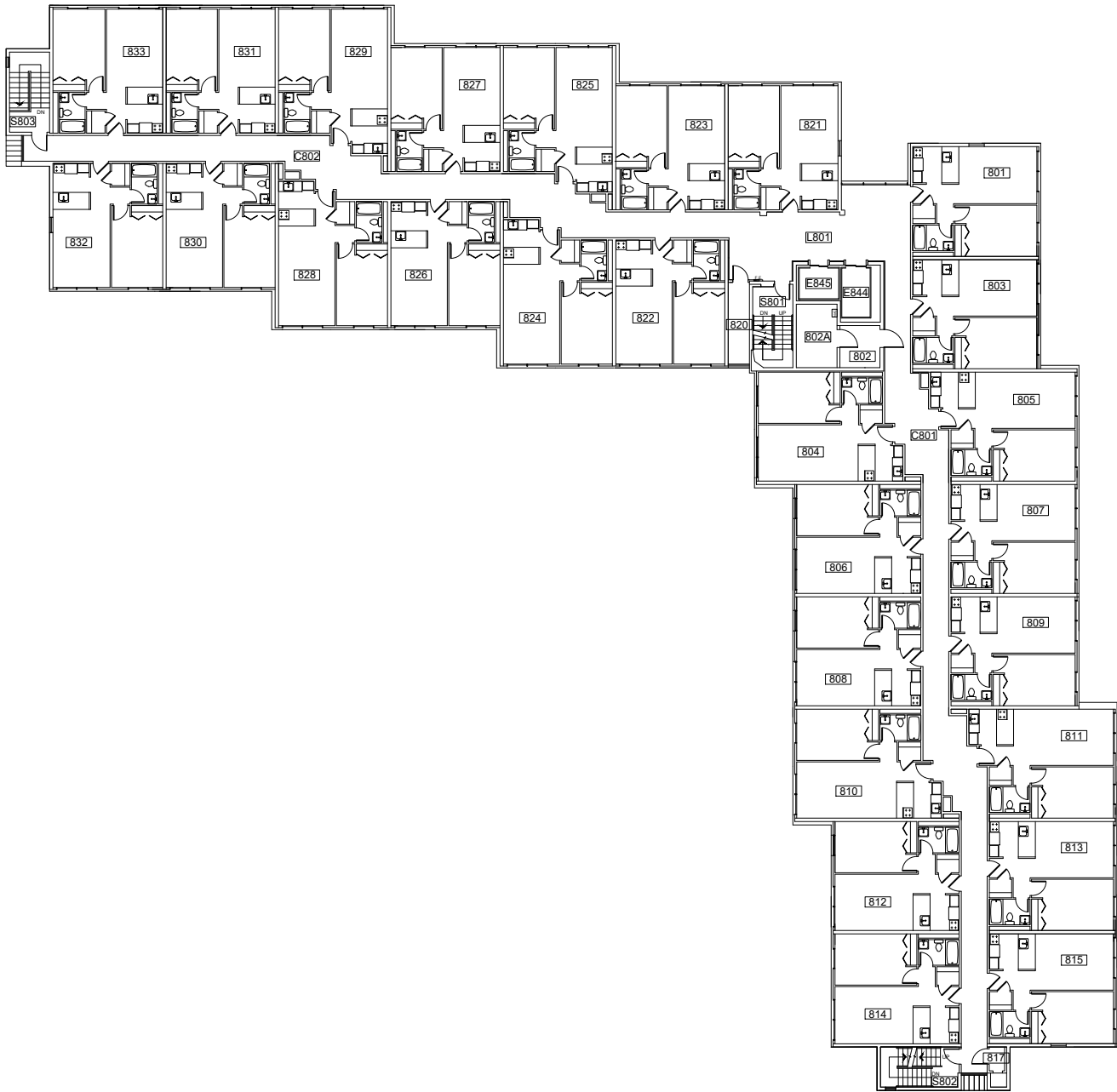
Scale
 $1/32" = 1'-0"$



SEVENTH FLOOR PLAN
 Joseph C. Blumel Hall
 1705 SW 11th Ave

DRAWN BY:
 HH
 DATE:
 01/2021



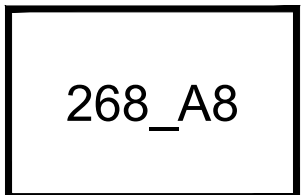


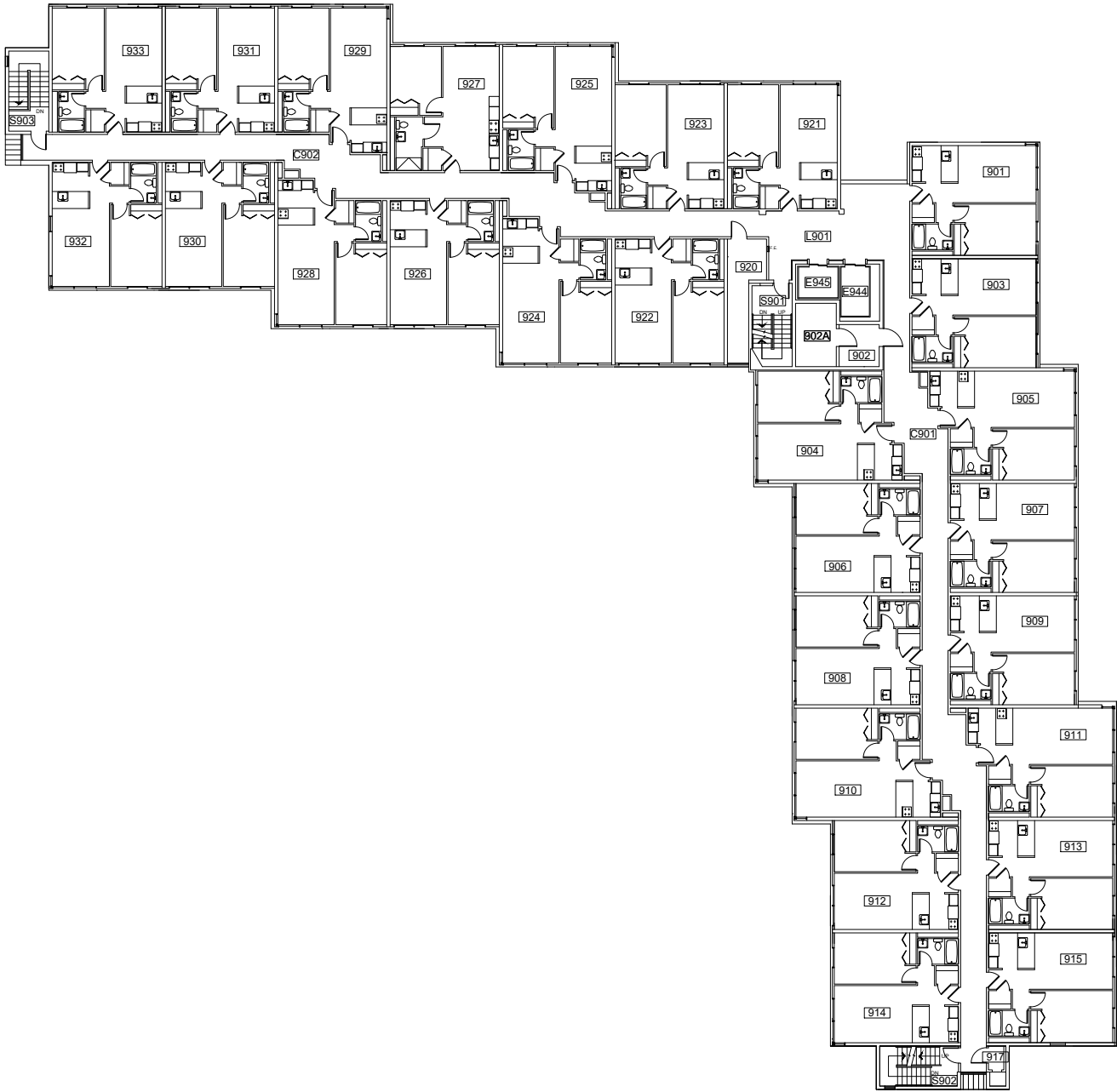
Scale
 $1/32" = 1'-0"$



EIGHTH FLOOR PLAN
 Joseph C. Blumel Hall
 1705 SW 11th Ave

DRAWN BY:
 HH
 DATE:
 01/2021



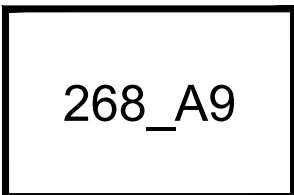


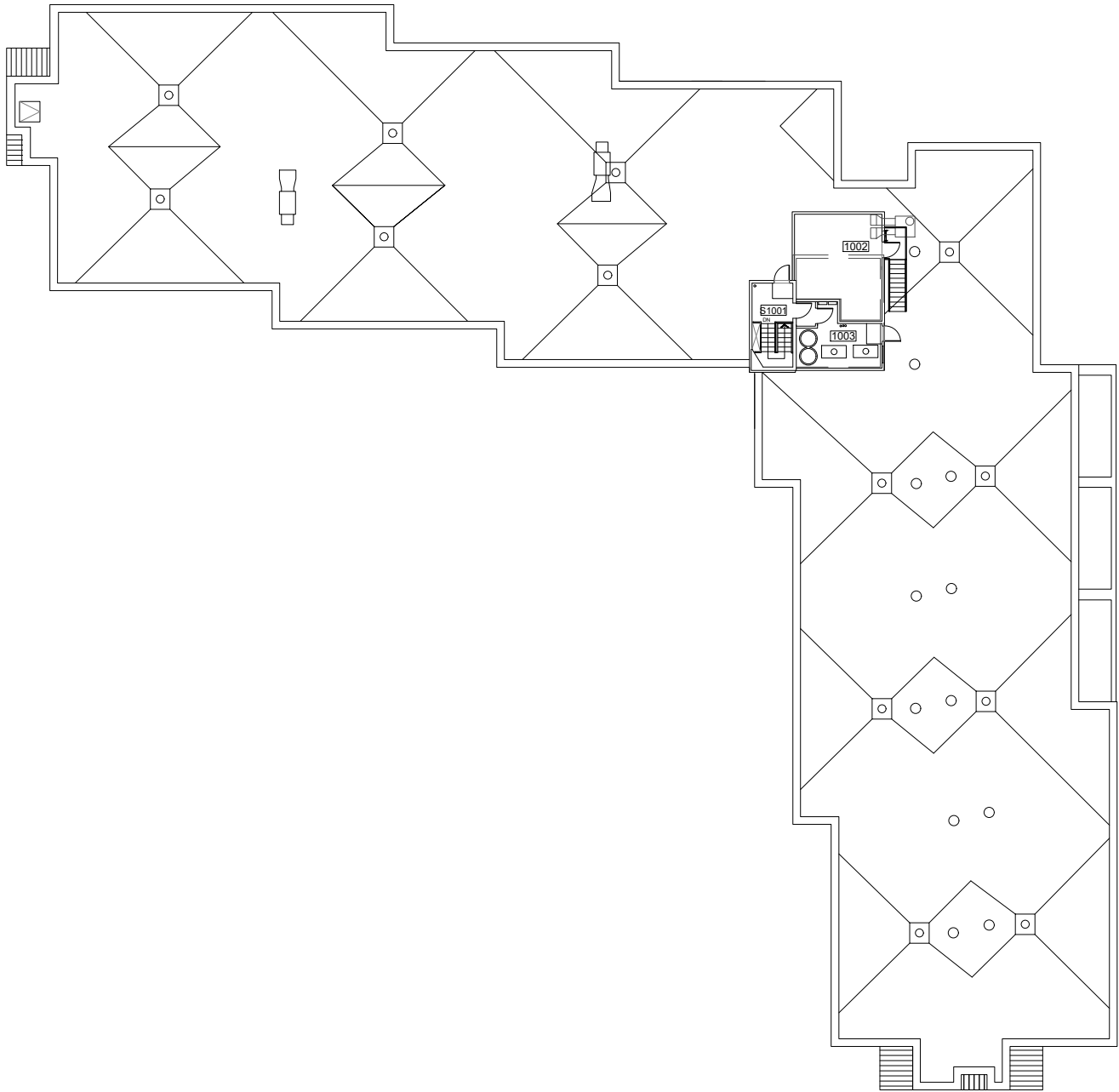
Scale
 $1/32" = 1'-0"$



NINTH FLOOR PLAN
 Joseph C. Blumel Hall
 1705 SW 11th Ave

DRAWN BY:
 HH
 DATE:
 01/2021



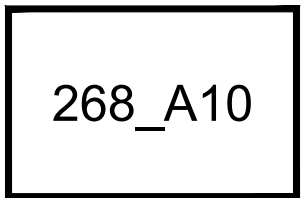


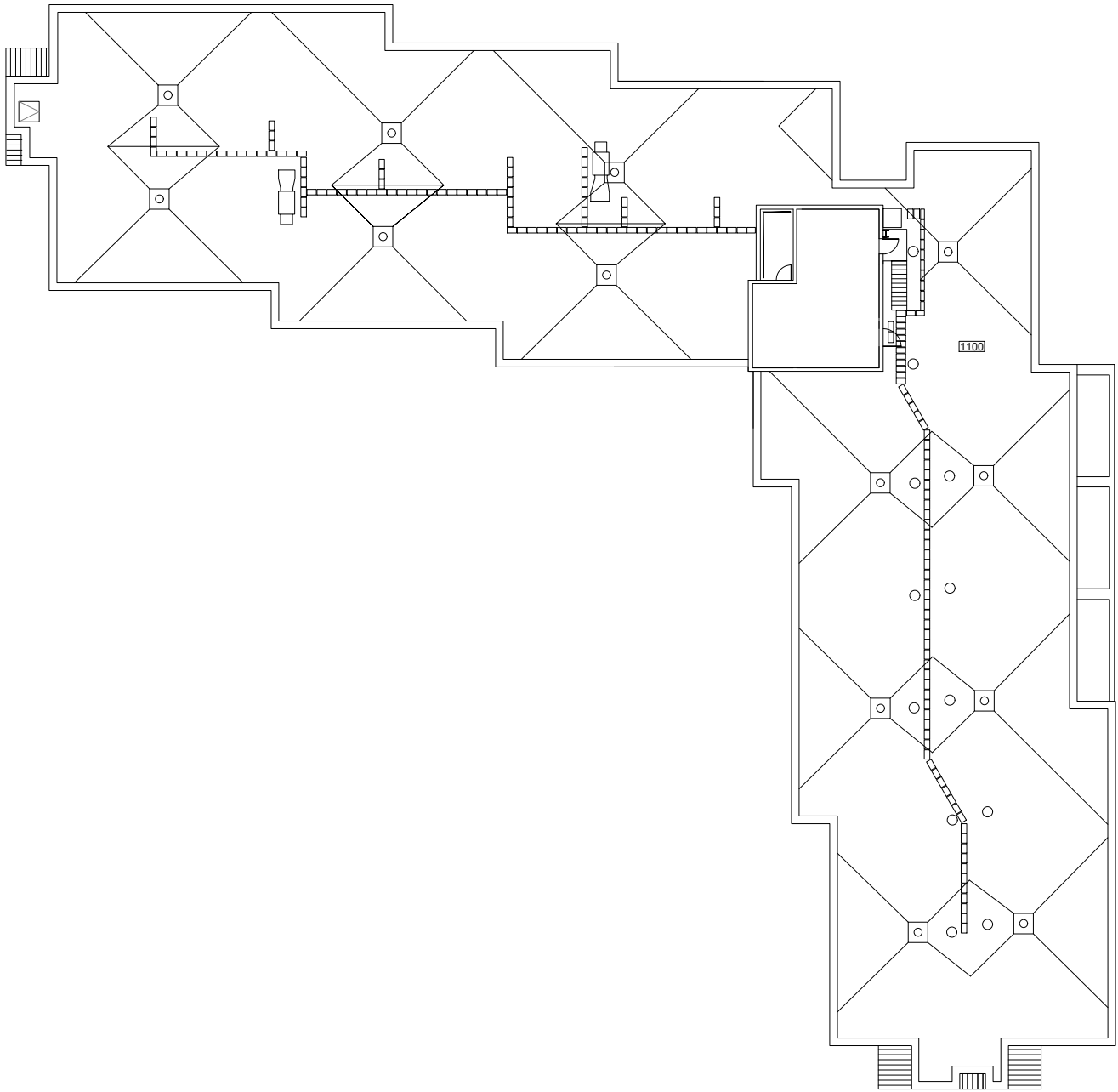
Scale
 1/32" = 1'-0"



PENTHOUSE PLAN
 Joseph C. Blumel Hall
 1705 SW 11th Ave

DRAWN BY:
 HH
 DATE:
 01/2021





Scale
 1/32" = 1'-0"



ROOF PLAN
 Joseph C. Blumel Hall
 1705 SW 11th Ave

DRAWN BY:
 HH
 DATE:
 01/2021

