
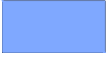



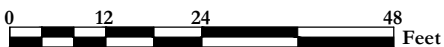


STANDARD LAYER REPORT

	AREA	QTY
 Building Services	183	3
 Circulation	1,405	10
 Mechanical Space	530	3
 Net Assignable Space	4,650	24
 Vertical Penetrations	8	2
TOTAL:	6,776	42
Floor Gross:	7,730	

STANDARD SPACE REPORT



EAST HALL

First Floor Plan

632 SW Hall, Portland, Oregon 97201

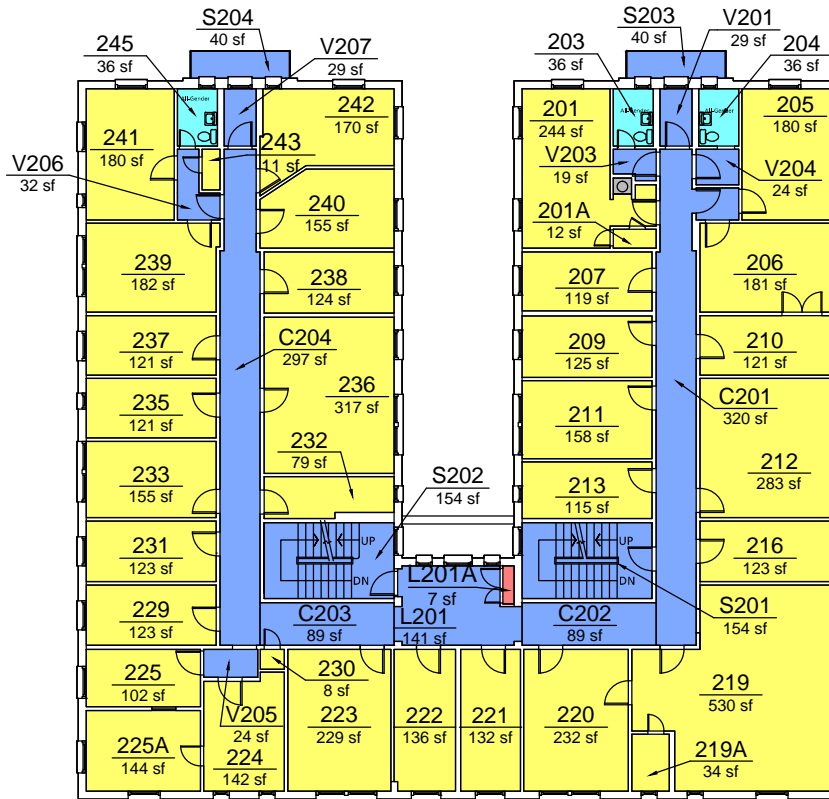
Print Date:


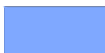



Last Modified Date: 11/2017



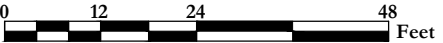
Portland State
UNIVERSITY

Campus Planning Office
<http://www.pdx.edu/campus-planning>



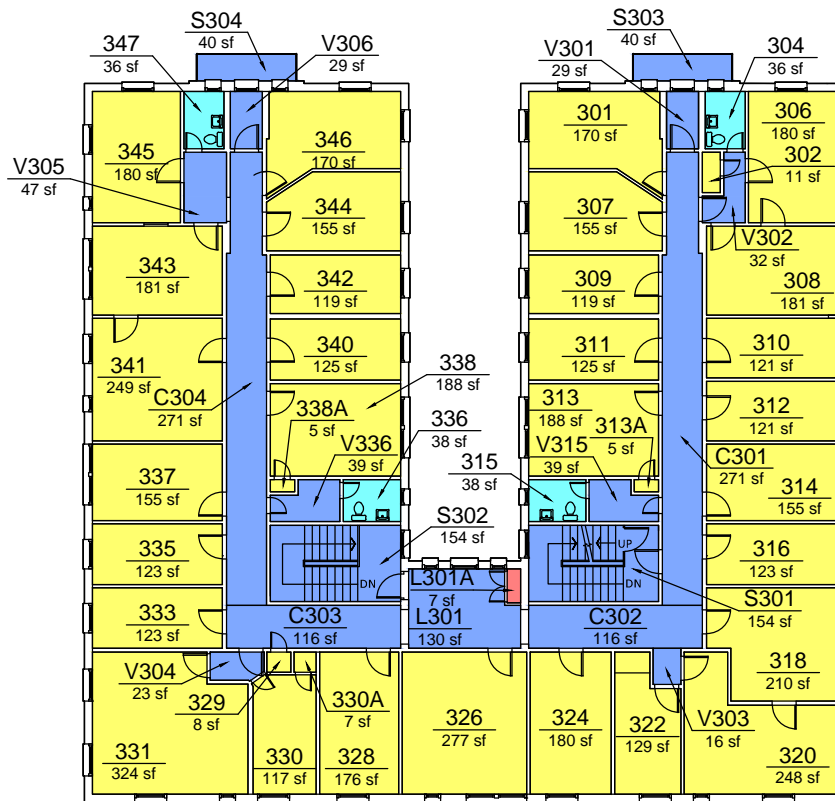
STANDARD LAYER REPORT		
	AREA	QTY
	Building Services	108 3
	Circulation	1,481 15
	Mechanical Space	7 1
	Net Assignable Space	5,211 34
	Vertical Penetrations	5 1
TOTAL:		6,812 54
Floor Gross:		7,830





STANDARD SPACE REPORT



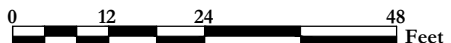
EAST HALL
 Second Floor Plan
 632 SW Hall, Portland, Oregon 97201
 Print Date:
 Last Modified Date: 03/2019





STANDARD LAYER REPORT			
		AREA	QTY
	Building Services	148	4
	Circulation	1,546	17
	Mechanical Space	7	1
	Net Assignable Space	5,103	35
TOTAL:		6,804	57
Floor Gross:		7,830	

STANDARD SPACE REPORT



EAST HALL

Third Floor Plan

632 SW Hall, Portland, Oregon 97201

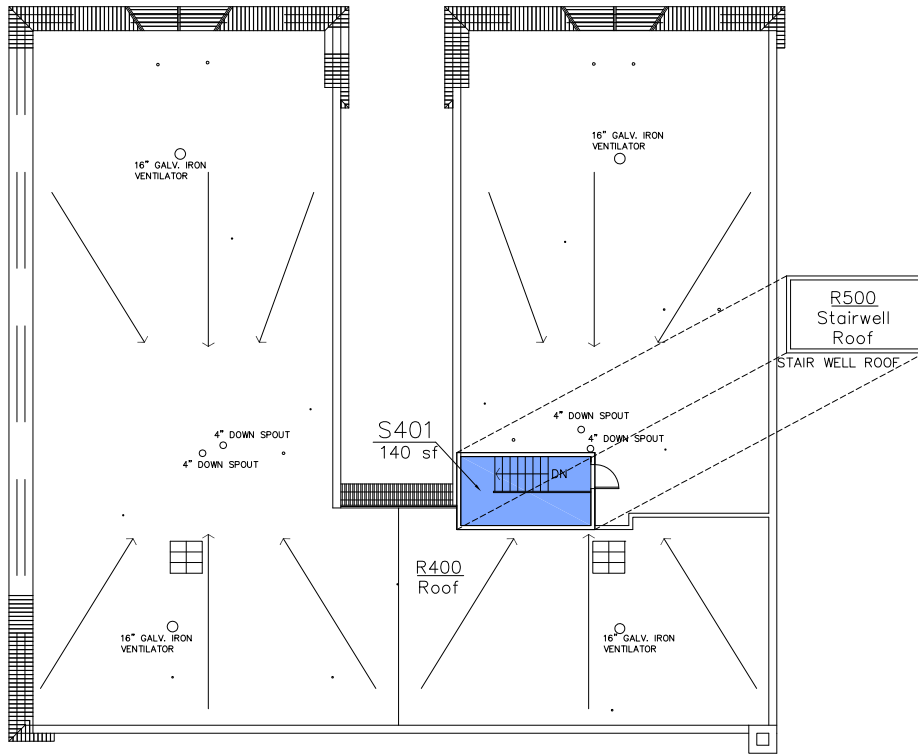
Print Date: 2011

Last Modified Date: 03/2019




Portland State
UNIVERSITY

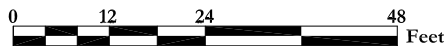
Campus Planning Office
<http://www.pdx.edu/campus-planning>



STANDARD LAYER REPORT

	AREA	QTY
 Circulation	140	1
TOTAL:	140	1
Floor Gross:	166	

STANDARD SPACE REPORT



EAST HALL

Roof Plan

632 SW Hall, Portland, Oregon 97201

Print Date:

Last Modified Date: 04/2016



Campus Planning Office
<http://www.pdx.edu/campus-planning>